



Lullington Garth

Woodside Park N12 7BY

£2,000 Per calendar month

Totteridge office:

74 Totteridge Lane - Totteridge - London N20 8QG

t : 020 8445 3132

f : 020 8445 4492

e : totteridge@realestates-wsp.co.uk

Lullington Garth , Woodside Park

A well presented 3 bedroom semi-detached family home in the heart of Woodside Park, situated within the catchment area for primary schools and close to local amenities.

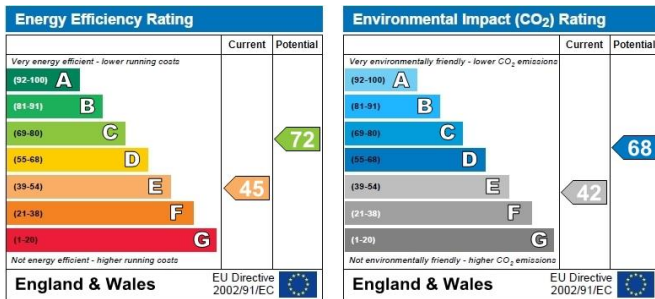
The accommodation comprises 2 separate reception rooms, fitted kitchen, 3 bedrooms, family bathroom, separate wc and approx 80' rear garden.

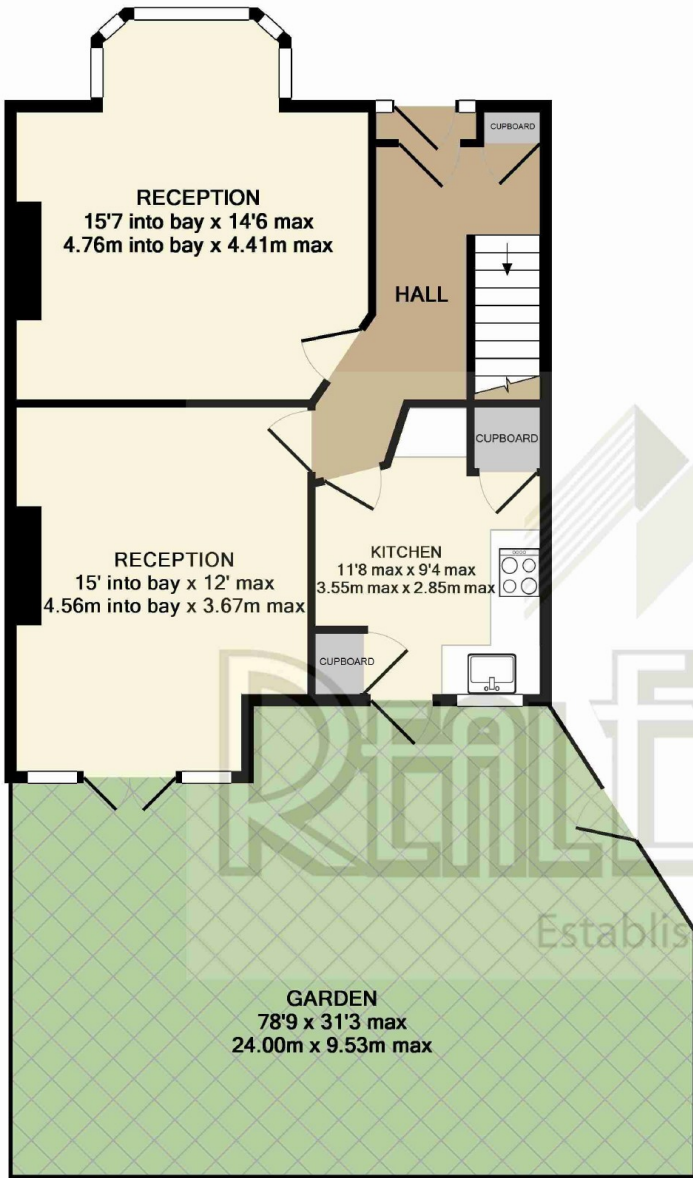
* FURNISHED/UNFURNISHED * BEGINNING DECEMBER *

Viewing:

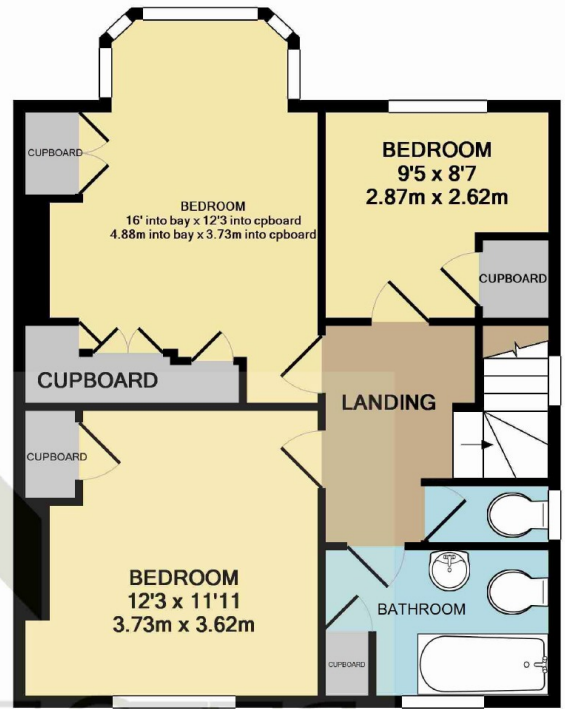
By prior appointment with the vendors agent Real Estates Tel: 020 8445 6387

You may download, store and use the material for your own personal use and research. You may not republish, retransmit, redistribute or otherwise make the material available to any party or make the same available on any website, online service or bulletin board of your own or of any other party or make the same available in hard copy or in any other media without the website owner's express prior written consent. The website owner's copyright must remain on all reproductions of material taken from this website.





GROUND FLOOR



1ST FLOOR



TOTAL APPROX. FLOOR AREA 1103 SQ.FT. (102.5 SQ.M.)
 GiA measurements are approximate. Not to scale. Illustrative purposes only