



Twineham Green
Woodside Park N12 7EP
£975,000 Freehold

Totteridge office:

74 Totteridge Lane - Totteridge - London N20 8QG

t : 020 8445 3132

f : 020 8445 4492

e : totteridge@realestates-wsp.co.uk

Twineham Green , Woodside Park

Situated in one of Woodside Park's most prestigious roads, Real Estates are delighted to offer for sale this Leyland built semi-detached family home ideally situated just a few minutes walking distance to Woodside Park Northern line tube station, local amenities and within the catchment area for schools.

Arranged over 3 floors, the house offers spacious living and entertaining accommodation including 4 bedrooms 2 bathrooms, through lounge/dining room, kitchen/morning room ,TV room and a well maintained rear garden.

This property also offers further potential to extend if required (stpp).

ENTRANCE HALL

GUEST CLOAKROOM

RECEPTION 15'11 x 15'10 into bay (4.85m x 4.83m into bay)

RECEPTION 13'2 x 13' (4.01m x 3.96m)

RECEPTION 11'9 x 8'10 (3.58m x 2.69m)

KITCHEN 19'8 max x 10' max (5.99m max x 3.05m max)

1ST FLOOR:

BEDROOM 15'3 into bay x 14'7 (4.65m into bay x 4.45m)

BEDROOM 14'7 x 13'1 (4.45m x 3.99m)

BEDROOM 9'6 x 8'9 (2.90m x 2.67m)

BATHROOM/WC

2ND FLOOR:

BEDROOM 20'8 max x 14'8 max (6.30m max x 4.47m max)

EN SUITE BATHROOM

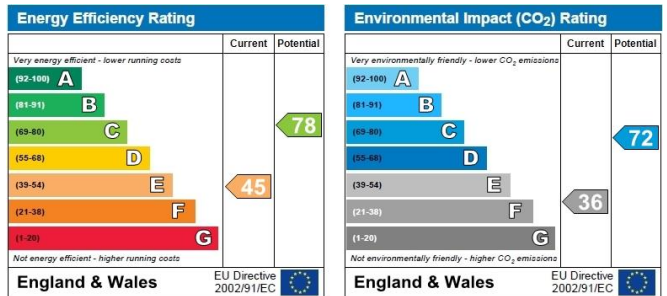
EXTERIOR:

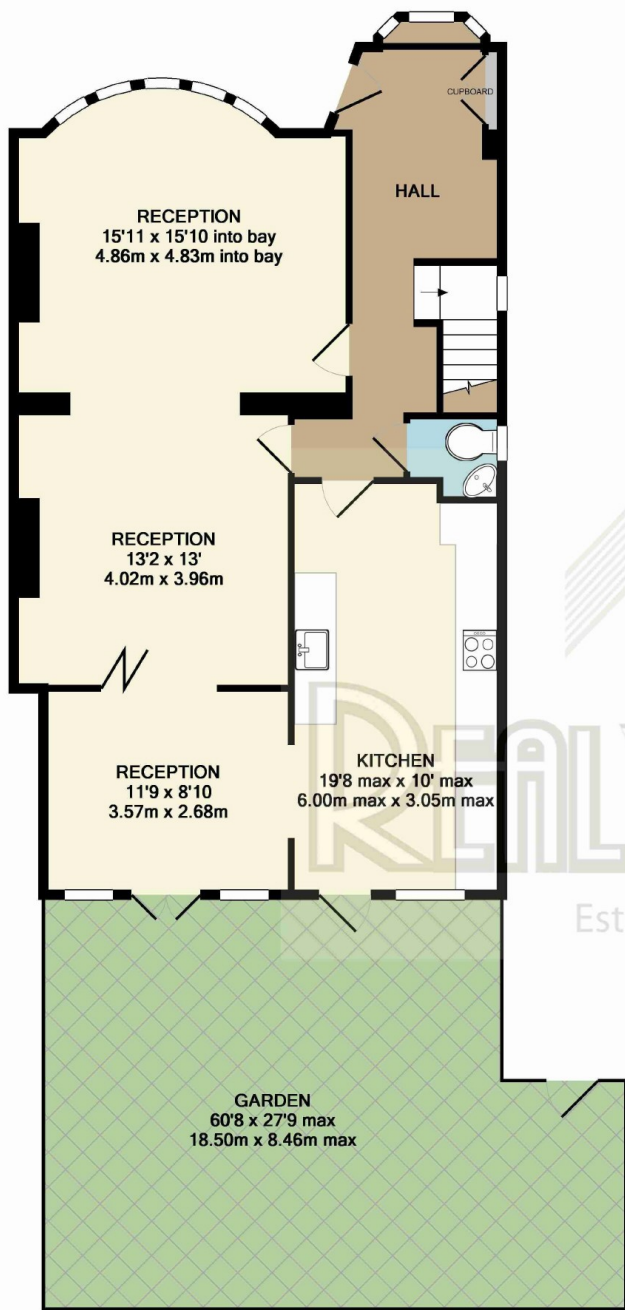
REAR GARDEN 60'8 x 27'9 max (18.49m x 8.46m max)

Viewing:

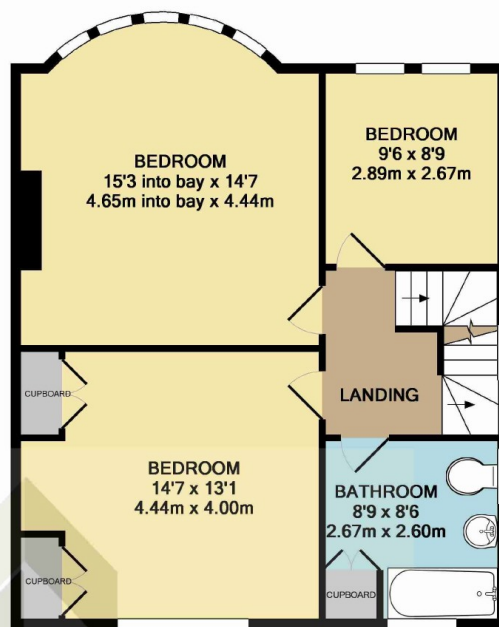
By prior appointment with the vendors agent Real Estates Tel: 020 8445 6387

You may download, store and use the material for your own personal use and research. You may not republish, retransmit, redistribute or otherwise make the material available to any party or make the same available on any website, online service or bulletin board of your own or of any other party or make the same available in hard copy or in any other media without the website owner's express prior written consent. The website owner's copyright must remain on all reproductions of material taken from this website.

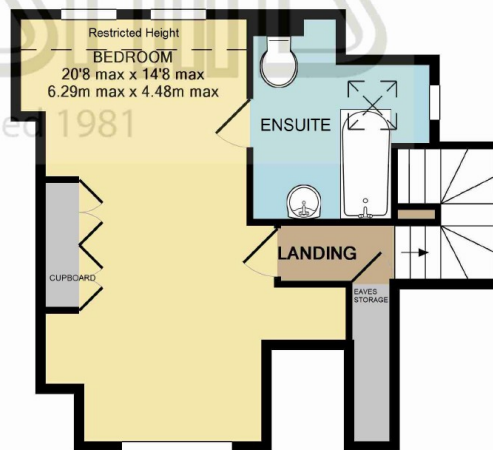




GROUND FLOOR



1ST FLOOR



2ND FLOOR

TOTAL APPROX. FLOOR AREA 1885 SQ.FT. (175.1 SQ.M.)
GIA measurements are approximate. Not to scale. Illustrative purposes only