



Links Drive
Totteridge N20 8QU
Guide price £1,550,000 Freehold

Links Drive , Totteridge

Real Estates are delighted to offer for sale this rarely available, very well presented 5 double bedroom, 3 bathroom detached house situated in a private road in the heart of Totteridge, opposite South Herts Golf Club.

Built in 1928, the property features wood panelling to the entrance hall and double height beamed ceiling to the master bedroom, as well as benefiting from an integral garage, utility room, guest cloakroom and mature, well maintained rear garden.

Planning permission has been granted for a single rear extension.

Early viewing is highly recommended via sole agent Real Estates 020 8445 3132

ENTRANCE HALL

MATURE REAR GARDEN

GUEST CLOAKROOM

Viewing:

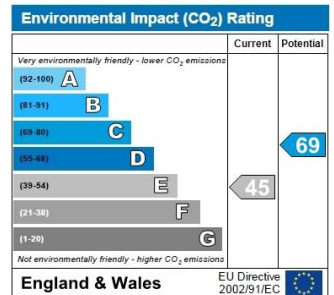
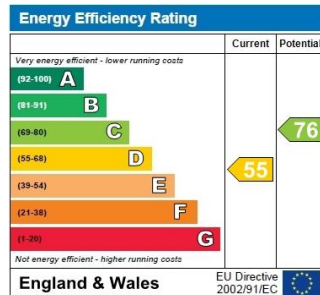
By prior appointment with the vendors agent Real Estates Tel: 0208 445 3132

SITTING ROOM 14'6 x 14'5 (4.42m x 4.39m)

You may download, store and use the material for your own personal use and research. You may not republish, retransmit, redistribute or otherwise make the material available to any party or make the same available on any website, online service or bulletin board of your own or of any other party or make the same available in hard copy or in any other media without the website owner's express prior written consent. The website owner's copyright must remain on all reproductions of material taken from this website.

RECEPTION 17'4 x 13'5 (5.28m x 4.09m)

KITCHEN/BREAKFAST ROOM 22'6 x 15'8 (6.86m x 4.78m)



UTILITY ROOM 11'5 x 5'4 (3.48m x 1.63m)

CONSERVATORY 14'6 x 8'11 (4.42m x 2.72m)

1ST FLOOR:

MASTER BEDROOM 14'5 x 11'10 (4.39m x 3.61m)

EN SUITE BATHROOM 11'6 x 5'7 (3.51m x 1.70m)

BEDROOM 14'8 x 12'11 (4.47m x 3.94m)

BEDROOM 14'8 x 13'3 (4.47m x 4.04m)

BEDROOM 15' x 11'9 (4.57m x 3.58m)

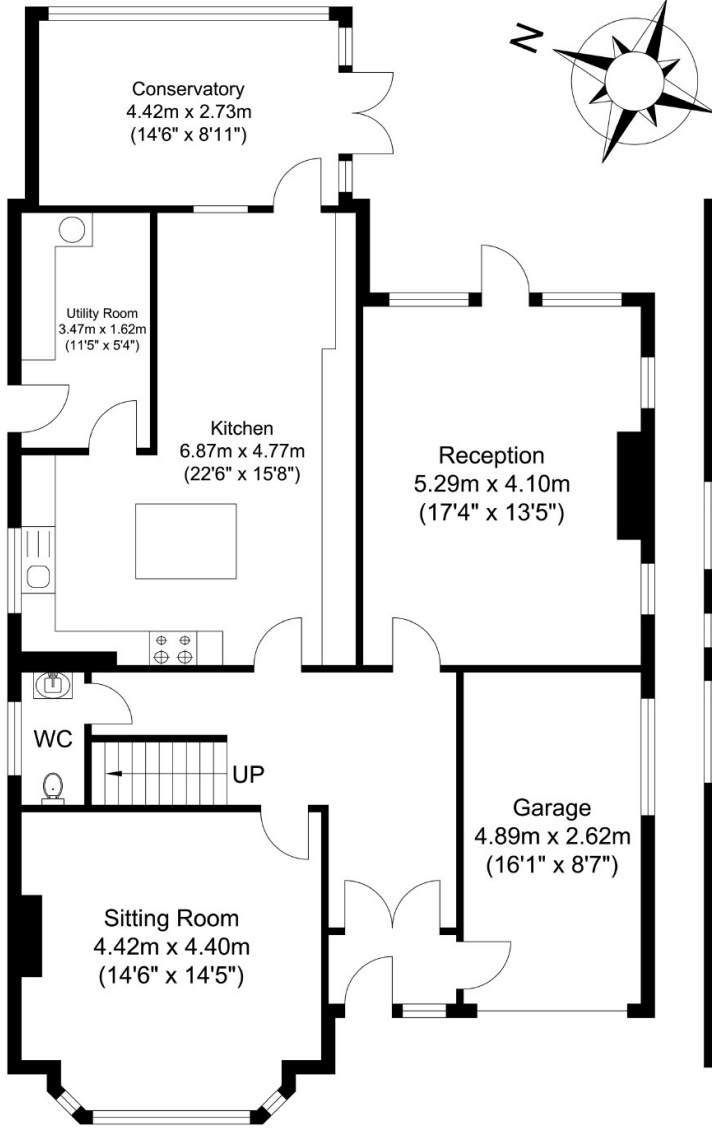
FAMILY BATHROOM 1 8'4 x 5'5 (2.54m x 1.65m)

BEDROOM 11'7 x 10'4 (3.53m x 3.15m)

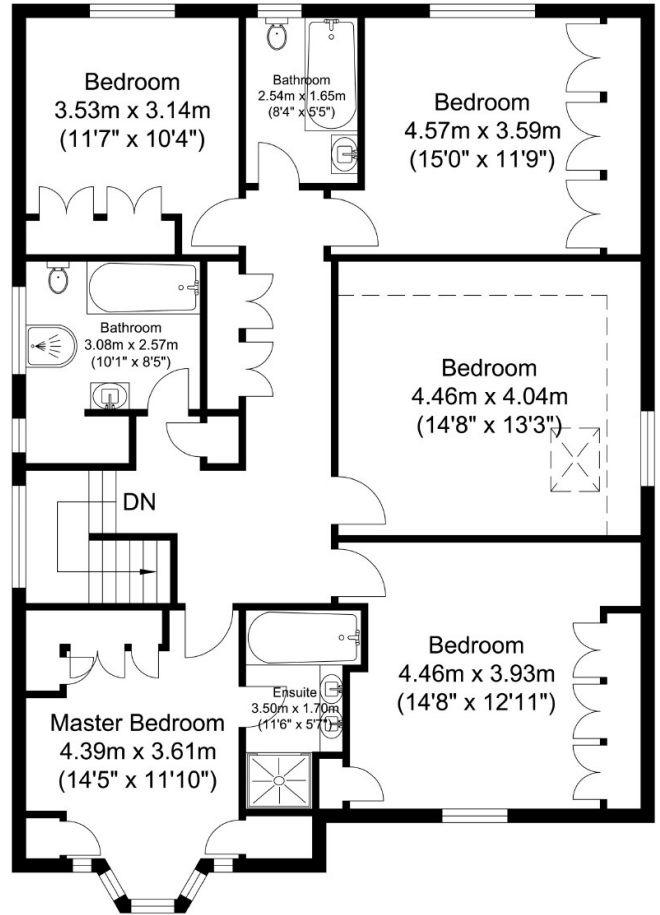
FAMILY BATHROOM 2 10'1 x 8'5 (3.07m x 2.57m)

EXTERIOR:

INTEGRAL GARAGE 16'1 x 8'7 (4.90m x 2.62m)



Ground Floor
Approximate Floor Area
1282.08 sq. ft.
(119.11 sq. m)



First Floor
Approximate Floor Area
1186.82 sq. ft.
(110.26 sq. m)

Total Floor Area
Approximate Floor Area
2468.91 sq. ft.
(229.37 sq. m)