



Church Crescent Whetstone N20 0JP £995,000 Freehold

Church Crescent , Whetstone

Boasting a south-west facing rear garden, this well presented 4 bedroom detached family home offers approx 1,625 sq ft and is situated in a sought after turning in the heart of Whetstone.

The property offers a thru lounge/dining room, family room/study, modern fitted kitchen/breakfast room, utility room, bathroom/wc, block paved carriage driveway, gas central heating and double glazing.

The property is offered CHAIN FREE. Sole Agents.

Entrance Hall:

Guest Cloakroom:

Through Lounge/Dining Room: 26'3 x 12'2 (8.00m x 3.71m)

Reception 3/Garage Conversion 17'11 x 7'8 (5.46m x 2.34m)

Modern Fitted Kitchen/Breakfast room: 19'10 x 12' > 7' (6.05m x 3.66m >2.13m)

Utility Room:

Master Bedroom: 15' into bay x 12'1 (4.57m into bay x 3.68m)

Bedroom 2: 13' x 12'1 (3.96m x 3.68m)

Bedroom 3: 15'7 x 7'11 (4.75m x 2.41m)

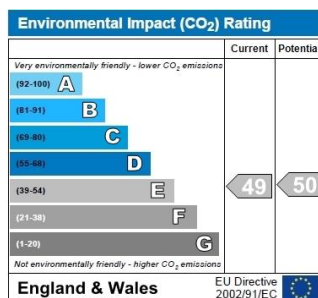
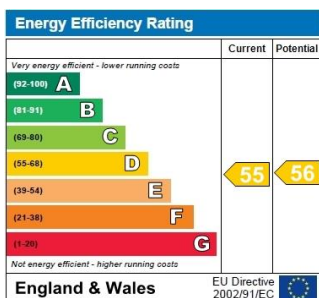
Bedroom 4: 9' x 7'7 (2.74m x 2.31m)

Bathroom: 7'8 x 5'10 (2.34m x 1.78m)

Viewing:

By prior appointment with the vendors agent Real Estates Tel: 0208 445 3132

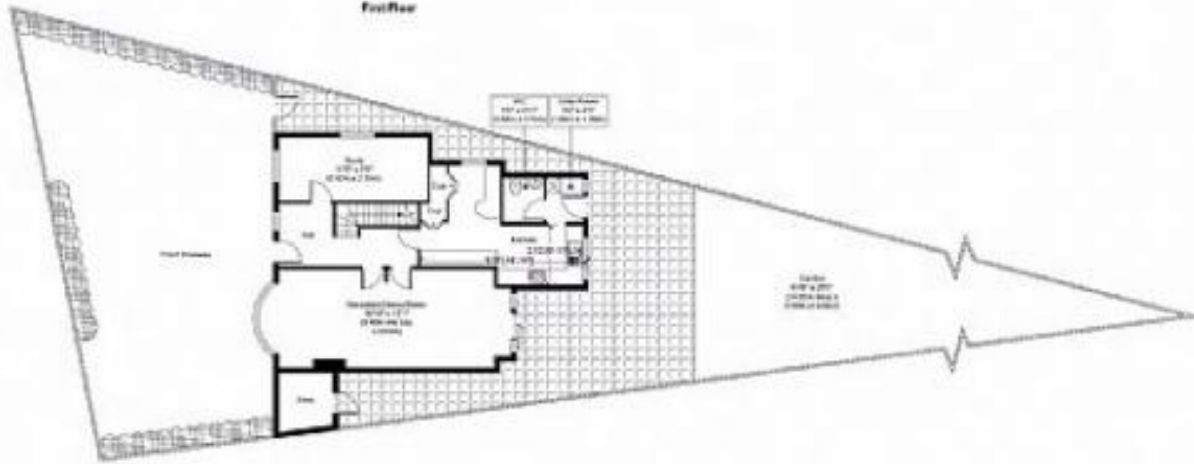
You may download, store and use the material for your own personal use and research. You may not republish, retransmit, redistribute or otherwise make the material available to any party or make the same available on any website, online service or bulletin board of your own or of any other party or make the same available in hard copy or in any other media without the website owner's express prior written consent. The website owner's copyright must remain on all reproductions of material taken from this website.



Church Crescent, N20
Approx. Gross Internal Floor Area 1625 sq. ft / 151 sq. m



First Floor



Ground Floor