



Steynings Way
Woodside Park N12 7LN
Guide price £1,395,000 Freehold

Totteridge office:

74 Totteridge Lane - Totteridge - London N20 8QG

t : 020 8445 3132

f : 020 8445 4492

e : totteridge@realestates-wsp.co.uk

Steynings Way , Woodside Park

Occupying one of the largest plots in the heart of Woodside Park and located at the top end of a quiet cul-de-sac, is this detached 4 bedroom family home offering spacious accommodation with potential to extend (stpp) and further enhance.

The property comprises thru lounge/dining room with doors leading to the terrace, study/morning room, kitchen/breakfast room, guest cloakroom, master bedroom with en suite bathroom, 3 further bedrooms and family bathroom/wc.

To the rear, the beautifully maintained, west facing garden measures approx 150 ft and features a timber built pool house with heated swimming pool and changing room/shower. The large single garage and carport to side is approached via own driveway with off street parking for several cars.

Woodside Park's shopping facilities, parkland, schools and Northern Line tube station are all within easy reach.

ENTRANCE HALL

WEST FACING REAR GARDEN approx 150' (approx 45.72m)

GUEST CLOAKROOM

With terrace and well maintained lawn bordered by mature shrubs and trees.

RECEPTION 13'7 x 13'1 (4.14m x 3.99m)

Open to:

TIMBER BUILT POOL HOUSE

With indoor heated swimming pool and changing room/shower.

RECEPTION 18'1 x 15'2 into bay (5.51m x 4.62m into bay)

Viewing:

By prior appointment with the vendors agent Real Estates Tel: 020 8445 6387

STUDY/MORNING ROOM 12'11 x 9'1 (3.94m x 2.77m)

Open to:

You may download, store and use the material for your own personal use and research. You may not republish, retransmit, redistribute or otherwise make the material available to any party or make the same available on any website, online service or bulletin board of your own or of any other party or make the same available in hard copy or in any other media without the website owner's express prior written consent. The website owner's copyright must remain on all reproductions of material taken from this website.

KITCHEN/BREAKFAST ROOM 15'11 x 15'4 (4.85m x 4.67m)

1ST FLOOR:

MASTER BEDROOM 15'11 x 15'4 into cupboard (4.85m x 4.67m into cupboard)

EN SUITE BATHROOM 12'11 x 11'7 (3.94m x 3.53m)

BEDROOM TWO 15'11 x 13'1 (4.85m x 3.99m)

BEDROOM THREE 14'4 x 11'8 (4.37m x 3.56m)

With access to balcony.

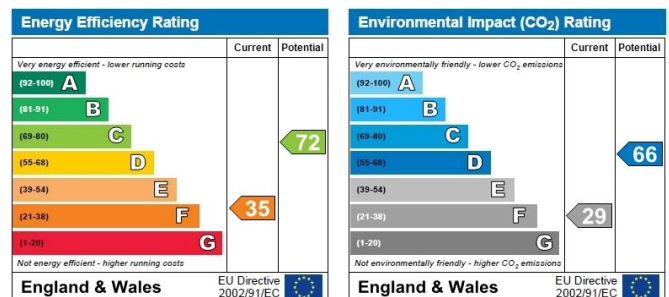
BEDROOM FOUR 13'1 x 10'5 (3.99m x 3.18m)

FAMILY BATHROOM/WC 9'5 x 8'8 (2.87m x 2.64m)

EXTERIOR:

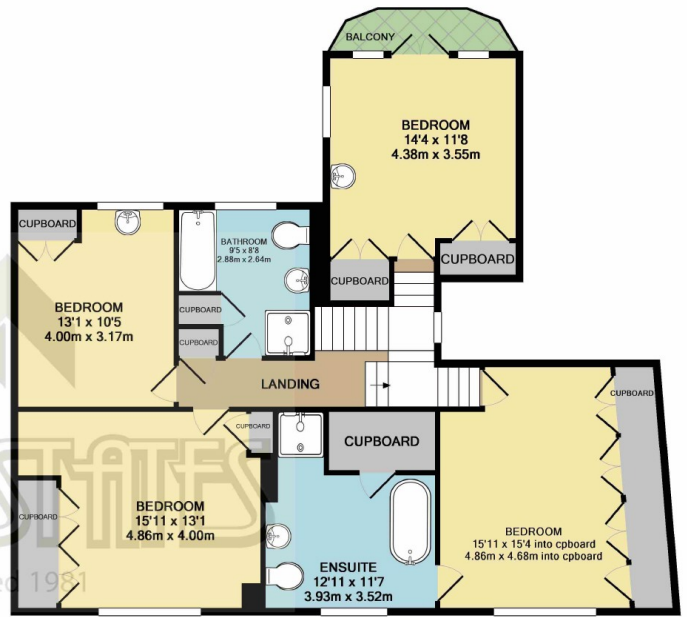
GARAGE 19'2 x 12'6 (5.84m x 3.81m)

Via own driveway.





GROUND FLOOR



1ST FLOOR

TOTAL APPROX. FLOOR AREA 2237 SQ.FT. (207.8 SQ.M.)
GIA measurements are approximate. Not to scale. Illustrative purposes only

