



Established 1981

Estate Agents • Residential Sales
Investments • Lettings

Totteridge Office:

74 Totteridge Lane
Totteridge
London N20 8QG

Telephone: 020 8445 3132

Fax: 020 8445 4492

Email: totteridge@realestates-wsp.co.uk

www.realestates-wsp.co.uk



Lynton Mead
Totteridge N20 8DH
£975,000 Freehold

Woodside Park Office:

14/14A Sussex Ring, Woodside Park, London N12 7HX **Tel: 020 8445 6387 Fax: 020 8445 4492** Email: info@realestates-wsp.co.uk

Real Estates on behalf of themselves and for the vendors of these properties whose agents they are, give notice that: (1) These particulars or any part of these particulars do not constitute a contract or an offer. (2) All statements made in these particulars relating to these properties are made without responsibility on the part of Real Estates or the Vendor. (3) Any intending purchaser must satisfy himself by inspection or otherwise as to the correctness of these particulars. (4) Real Estates or any person in their employment has no authority to make or give any warranty or representation whatever in relation to these properties.

Lynton Mead , Totteridge

Real Estates are delighted to offer for sale this recently refurbished 4 bedroom, 2 bathroom semi-detached property situated within the heart of Totteridge, convenient for Whetstone High Road's multiple shops, restaurants and bus services, as well as Totteridge & Whetstone Northern Line tube station.

We anticipate high demand so would recommend viewing the property at your earliest convenience in order to avoid disappointment. Please contact our Totteridge office on 020 8445 3132.

ENTRANCE HALL

GUEST CLOAKROOM

LIVING ROOM 15'4 x 11'11 (4.67m x 3.63m)

KITCHEN 23'4 x 19'1 (7.11m x 5.82m)

1ST FLOOR:

BEDROOM 15'5 x 11'11 (4.70m x 3.63m)

BEDROOM 15'3 x 11' (4.65m x 3.35m)

BEDROOM 11'2 x 7'9 (3.40m x 2.36m)

FAMILY BATHROOM 9'3 x 7'10 (2.82m x 2.39m)

2ND FLOOR:

BEDROOM 18'2 x 13'2 (5.54m x 4.01m)

EN SUITE SHOWER ROOM

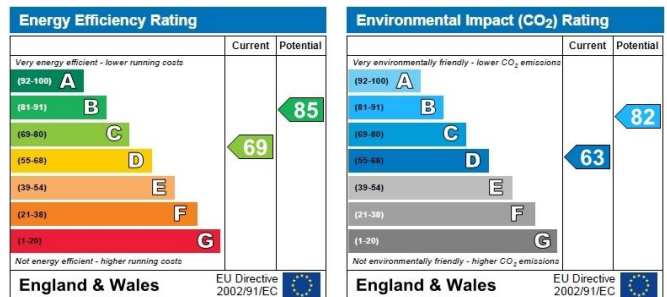
EXTERIOR:

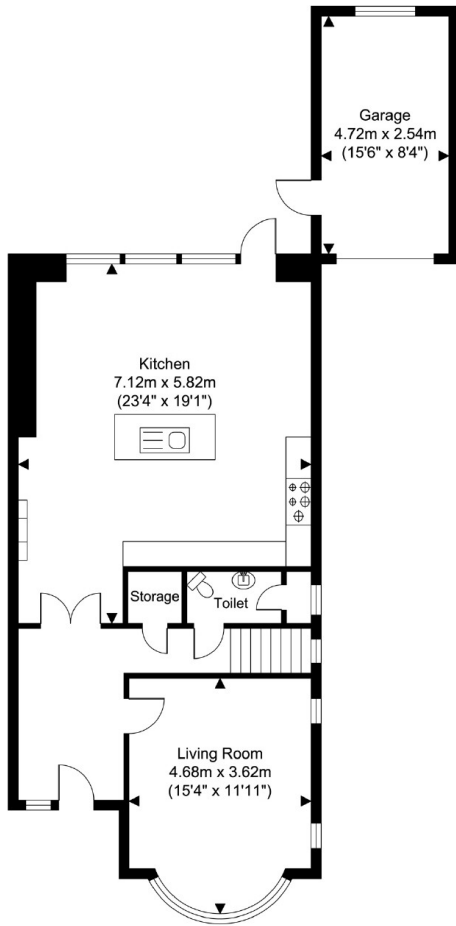
GARAGE 15'6 x 8'4 (4.72m x 2.54m)

Viewing:

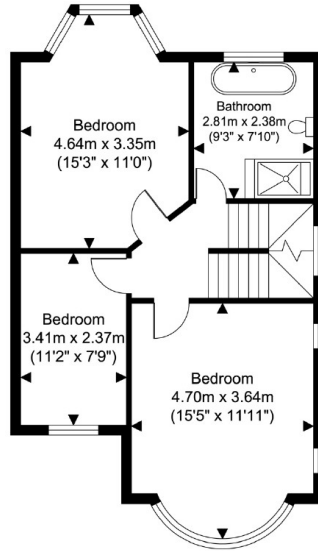
By prior appointment with the vendors agent Real Estates Tel: 0208 445 3132

You may download, store and use the material for your own personal use and research. You may not republish, retransmit, redistribute or otherwise make the material available to any party or make the same available on any website, online service or bulletin board of your own or of any other party or make the same available in hard copy or in any other media without the website owner's express prior written consent. The website owner's copyright must remain on all reproductions of material taken from this website.

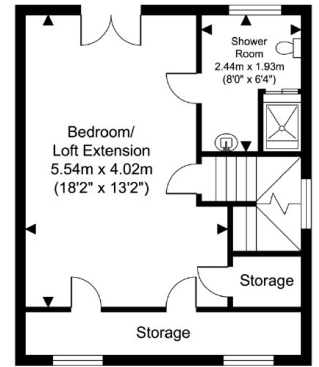




Ground Floor



First Floor



Second Floor

77 Lynton Mead, Whetstone, London, N20 8DH
APPROX. GROSS INTERNAL FLOOR AREA 1808 SQ FT / 168 SQ M

©Eagle Property Solutions

