



Established 1981

Estate Agents • Residential Sales  
Investments • Lettings

**Woodside Park Office:**

14/14A Sussex Ring  
Woodside Park  
London N12 7HX

**Telephone: 020 8445 6387**

**Fax: 020 8445 4492**

Email: [info@realestates-wsp.co.uk](mailto:info@realestates-wsp.co.uk)

[www.realestates-wsp.co.uk](http://www.realestates-wsp.co.uk)



**Chiddingfold**  
**Woodside Park N12 7EY**  
**£950,000 Freehold**

**Totteridge Office:**

74 Totteridge Lane, Totteridge, London N20 8QG **Tel: 020 8445 3132 Fax: 020 8445 4492** Email: [totteridge@realestates-wsp.co.uk](mailto:totteridge@realestates-wsp.co.uk)

Real Estates on behalf of themselves and for the vendors of these properties whose agents they are, give notice that: (1) These particulars or any part of these particulars do not constitute a contract or an offer. (2) All statements made in these particulars relating to these properties are made without responsibility on the part of Real Estates or the Vendor. (3) Any intending purchaser must satisfy himself by inspection or otherwise as to the correctness of these particulars. (4) Real Estates or any person in their employment has no authority to make or give any warranty or representation whatever in relation to these properties.

# Chiddingfold , Woodside Park

NEW INSTRUCTION \* CHAIN FREE and with views over a central green, Real Estates are delighted to offer this 3 bedroom semi-detached 'Leyland' built family home in this sought after location in the heart Woodside Park and within the catchment for Woodridge Primary School,

Although in need of updating, the property offers spacious accommodation as well as the benefit of further potential to extend (stpp).

**ENTRANCE HALL**

**GUEST CLOAKROOM**

**RECEPTION ROOM 15'8 x 15'6 into bay (4.78m x 4.72m into bay)**

**RECEPTION ROOM 15'4 into bay x 13' (4.67m into bay x 3.96m)**

**KITCHEN 10' x 9'9 (3.05m x 2.97m)**

**1ST FLOOR:**

**BEDROOM 15'7 into bay x 14'8 into cupboard (4.75m into bay x 4.47m into cupboard)**

**BEDROOM 14'8 x 13'1 (4.47m x 3.99m)**

**BEDROOM 9'2 x 8'8 (2.79m x 2.64m)**

**BATHROOM**

**SEPARATE WC**

**EXTERIOR:**

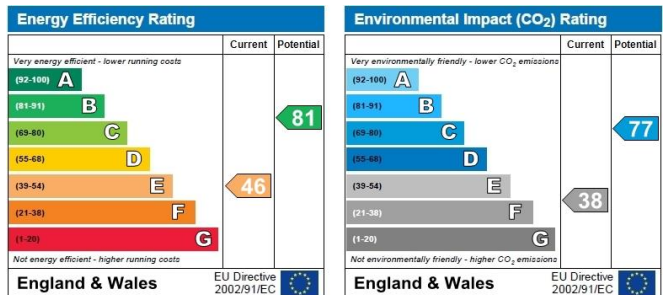
**GARAGE 19'3 x 7'5 (5.87m x 2.26m)**

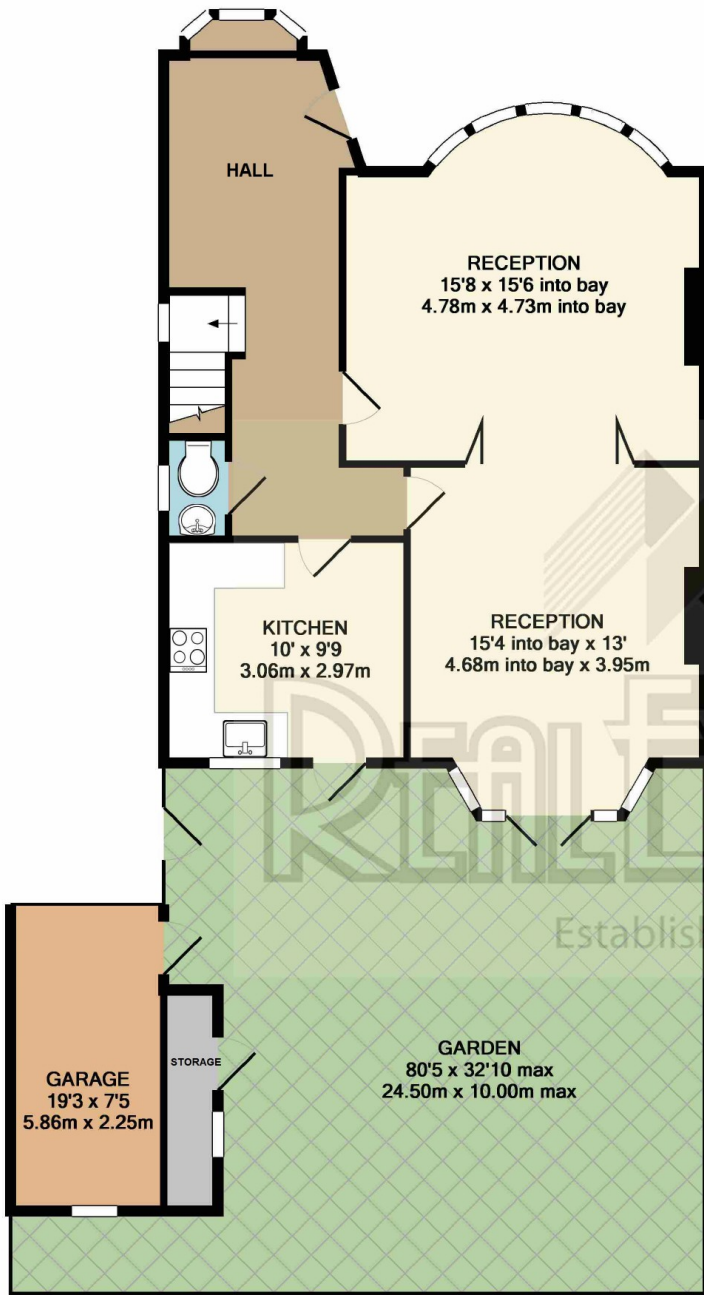
**REAR GARDEN 80'5 x 32'10 max (24.51m x 10.01m max)**

## Viewing:

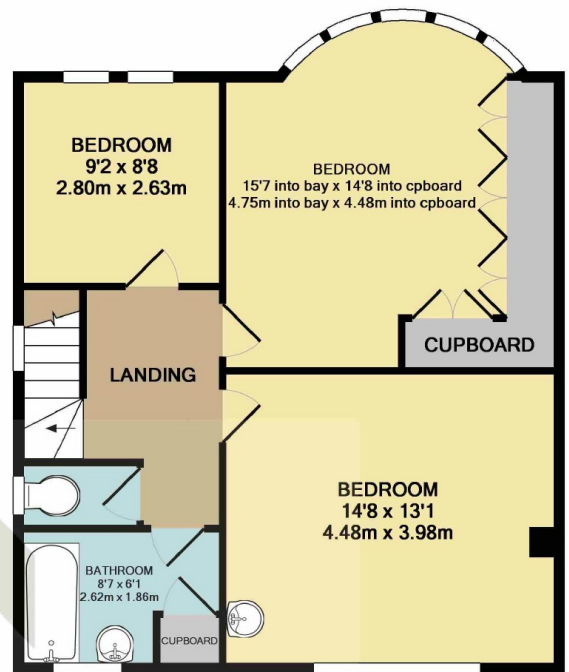
By prior appointment with the vendors agent Real Estates Tel: 020 8445 6387

You may download, store and use the material for your own personal use and research. You may not republish, retransmit, redistribute or otherwise make the material available to any party or make the same available on any website, online service or bulletin board of your own or of any other party or make the same available in hard copy or in any other media without the website owner's express prior written consent. The website owner's copyright must remain on all reproductions of material taken from this website.





GROUND FLOOR



1ST FLOOR



Established 1981

(EXCLUDES GARAGE & EXTERNAL STORAGE)  
TOTAL APPROX. FLOOR AREA 1326 SQ.FT. (123.2 SQ.M.)  
GIA measurements are approximate. Not to scale. Illustrative purposes only