



Established 1981

Estate Agents • Residential Sales
Investments • Lettings

Totteridge Office:

74 Totteridge Lane
Totteridge
London N20 8QG

Telephone: 020 8445 3132

Fax: 020 8445 4492

Email: totteridge@realestates-wsp.co.uk

www.realestates-wsp.co.uk



Maxfield Close
Whetstone N20 9DF
£1,195,000 Freehold

Woodside Park Office:

14/14A Sussex Ring, Woodside Park, London N12 7HX **Tel: 020 8445 6387 Fax: 020 8445 4492** Email: info@realestates-wsp.co.uk

Real Estates on behalf of themselves and for the vendors of these properties whose agents they are, give notice that: (1) These particulars or any part of these particulars do not constitute a contract or an offer. (2) All statements made in these particulars relating to these properties are made without responsibility on the part of Real Estates or the Vendor. (3) Any intending purchaser must satisfy himself by inspection or otherwise as to the correctness of these particulars. (4) Real Estates or any person in their employment has no authority to make or give any warranty or representation whatever in relation to these properties.

Maxfield Close , Whetstone

Real Estates are delighted to offer for sale this carefully thought out 5 bedroom fully refurbished detached family home situated in a sought after location in the heart of Whetstone, close to excellent schools, local amenities and Totteridge & Whetstone Northern Line tube station.

The property offers spacious, well proportioned accommodation including a bright hall leading to 2 receptions overlooking a south-west facing garden, a modern fitted kitchen with new appliances, utility room, guest cloakroom, separate utility room. Having recently been rewired, the garage comprises central heating and wood flooring with the space for two cars. To the 1st floor there is a master suite with fitted wardrobes and en suite bathroom with Jacuzzi bath and TV. The remaining 4 bedrooms are all good sizes, 2 of which have fitted wardrobes.

Early viewing highly recommended.

SPACIOUS ENTRANCE HALL

RECEPTION ROOM 17'3 x 15'6 (5.26m x 4.72m)

DINING ROOM 13'6 x 11'8 (4.11m x 3.56m)

KITCHEN 14'1 x 7'11 (4.29m x 2.41m)

UTILITY ROOM

GUEST CLOAKROOM

1ST FLOOR:

BEDROOM ONE 13'11 x 11'8 (4.24m x 3.56m)
With En Suite Bathroom

BEDROOM TWO 16'6 x 11'7 (5.03m x 3.53m)

BEDROOM THREE 11'1 x 10'9 (3.38m x 3.28m)

BEDROOM FOUR 11'10 x 8'9 (3.61m x 2.67m)

BEDROOM FIVE 9'1 x 7'4 (2.77m x 2.24m)

FAMILY BATHROOM

EXTERIOR:

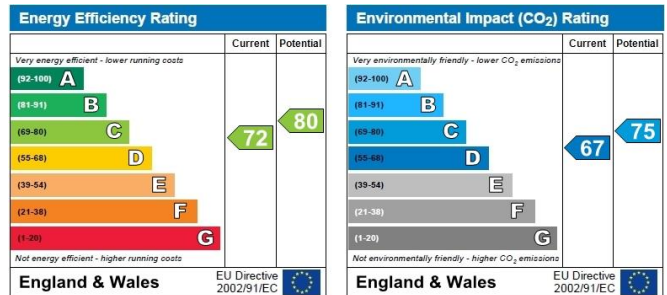
REAR GARDEN 39'8 x 34'9 (12.09m x 10.59m)

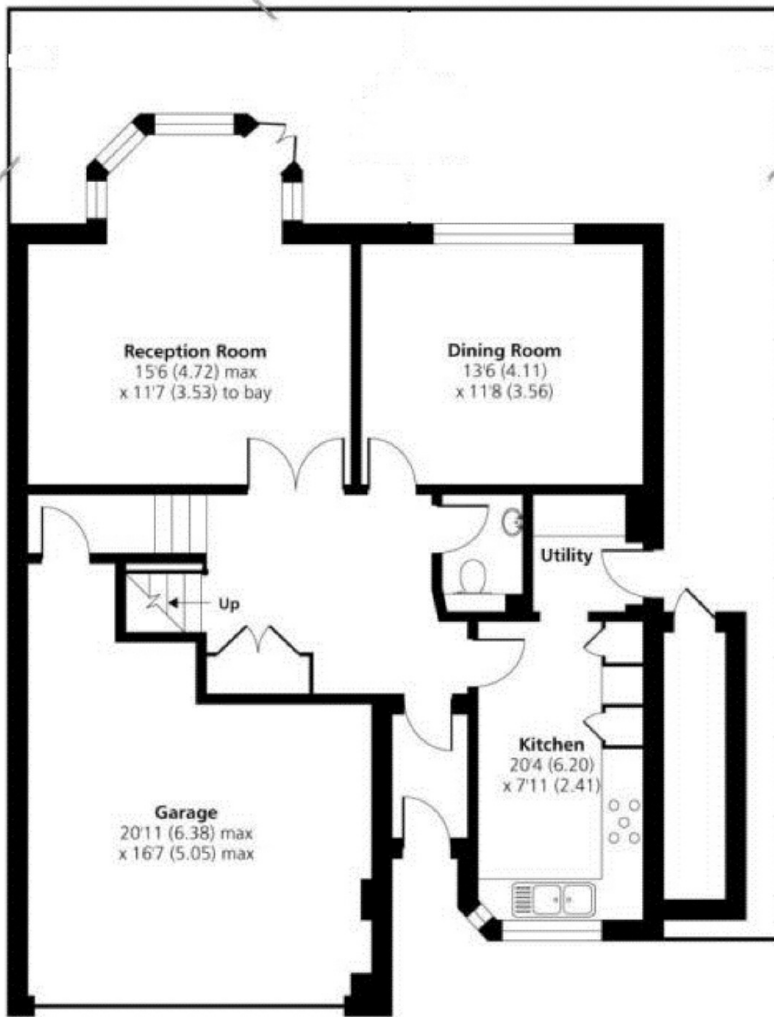
GARAGE 21'10 x 16'7 (6.65m x 5.05m)

Viewing:

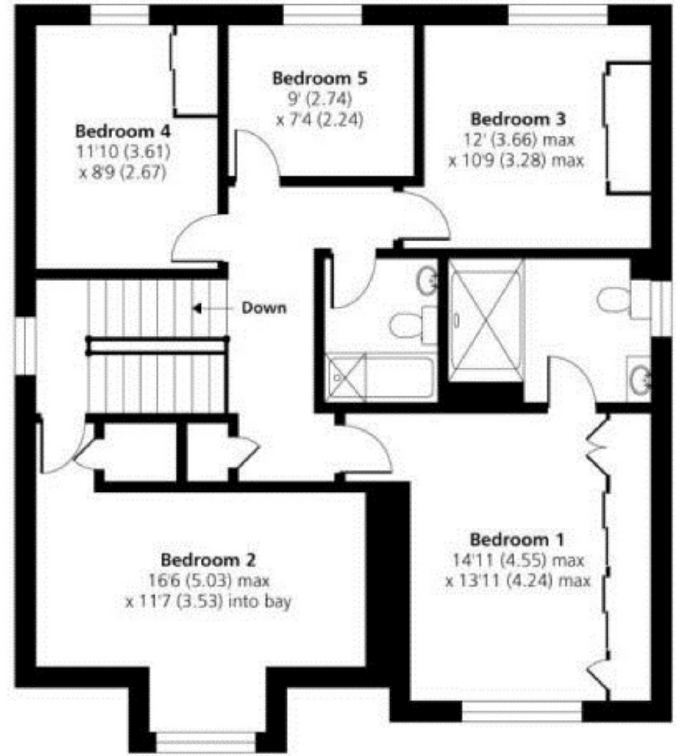
By prior appointment with the vendors agent Real Estates Tel:
0208 445 3132

You may download, store and use the material for your own personal use and research. You may not republish, retransmit, redistribute or otherwise make the material available to any party or make the same available on any website, online service or bulletin board of your own or of any other party or make the same available in hard copy or in any other media without the website owner's express prior written consent. The website owner's copyright must remain on all reproductions of material taken from this website.





GROUND FLOOR



FIRST FLOOR