



Established 1981

Estate Agents • Residential Sales
Investments • Lettings

Woodside Park Office:

14/14A Sussex Ring
Woodside Park
London N12 7HX

Telephone: 020 8445 6387

Fax: 020 8445 4492

Email: info@realestates-wsp.co.uk

www.realestates-wsp.co.uk



Lullington Garth

Woodside Park N12 7BB

Offers in the region of £850,000 Freehold

Totteridge Office:

74 Totteridge Lane, Totteridge, London N20 8QG **Tel: 020 8445 3132 Fax: 020 8445 4492** Email: totteridge@realestates-wsp.co.uk

Real Estates on behalf of themselves and for the vendors of these properties whose agents they are, give notice that: (1) These particulars or any part of these particulars do not constitute a contract or an offer. (2) All statements made in these particulars relating to these properties are made without responsibility on the part of Real Estates or the Vendor. (3) Any intending purchaser must satisfy himself by inspection or otherwise as to the correctness of these particulars. (4) Real Estates or any person in their employment has no authority to make or give any warranty or representation whatever in relation to these properties.

Lullington Garth , Woodside Park

CHAIN FREE Situated in this popular location, within the catchment area for Frith Manor Primary School, and close to Woodside Park's Northern Line tube station and local shops, a 3 bedroom detached family home offering great potential for further extension (stpp).

* 2 reception rooms * 3 bedrooms * kitchen * bathroom * separate wc * guest cloakroom * garage * off street parking * rear garden * workshop *

ENTRANCE HALL

GUEST CLOAKROOM

RECEPTION ONE 14'7 x 12' (4.45m x 3.66m)

RECEPTION TWO 15'3 x 11'11 (4.65m x 3.63m)

KITCHEN/DINER 19'5 x 11'5 (5.92m x 3.48m)

1ST FLOOR:

BEDROOM ONE 12'2 x 12' (3.71m x 3.66m)

BEDROOM TWO 12'2 x 12' (3.71m x 3.66m)

BEDROOM THREE 9'5 x 8'10 (2.87m x 2.69m)

BATHROOM

SEPARATE WC

EXTERIOR:

DETACHED GARAGE

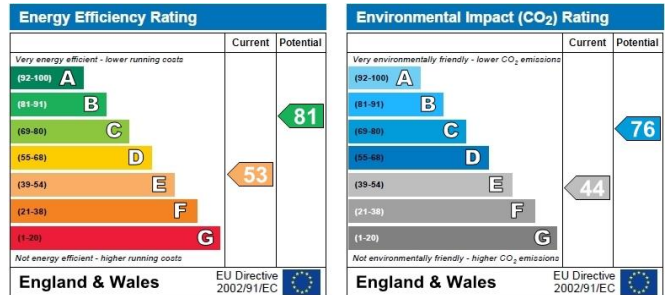
REAR GARDEN

WORKSHOP

Viewing:

By prior appointment with the vendors agent Real Estates Tel: 020 8445 6387

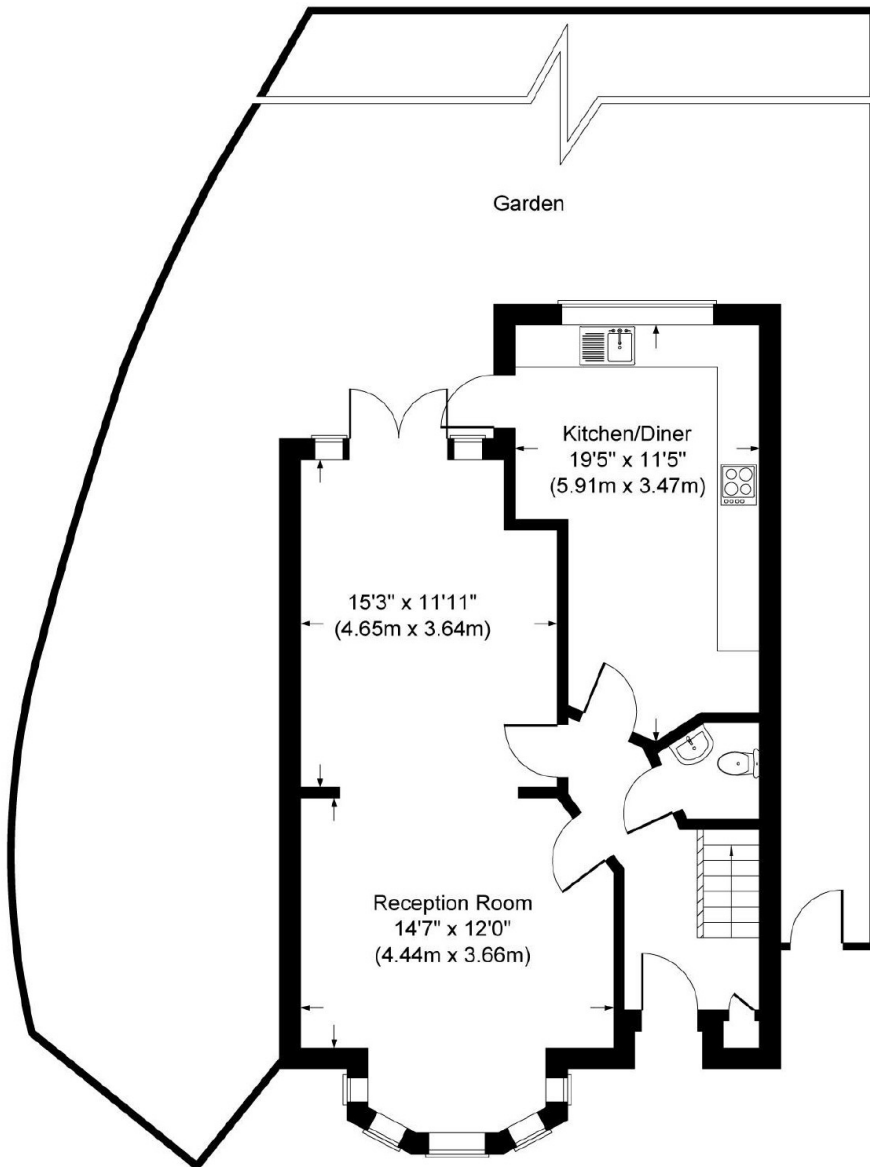
You may download, store and use the material for your own personal use and research. You may not republish, retransmit, redistribute or otherwise make the material available to any party or make the same available on any website, online service or bulletin board of your own or of any other party or make the same available in hard copy or in any other media without the website owner's express prior written consent. The website owner's copyright must remain on all reproductions of material taken from this website.



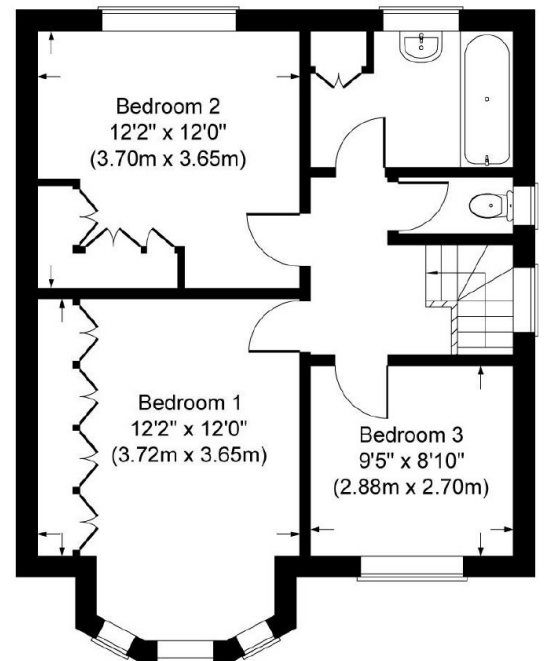
Lullington Garth, London, N12

Total Approx. 116.01 sq. metres (1248 sq. feet)

Ground Floor
Approx. 62.94 sq. metres (677 sq. feet)



First Floor
Approx. 53.07 sq. metres (571 sq. feet)



Not to Scale. Produced by The Plan Portal 2016
For Illustrative Purposes Only.