



Established 1981

Estate Agents • Residential Sales
Investments • Lettings

Woodside Park Office:

14/14A Sussex Ring
Woodside Park
London N12 7HX

Telephone: 020 8445 6387

Fax: 020 8445 4492

Email: info@realestates-wsp.co.uk

www.realestates-wsp.co.uk



Lullington Garth
Woodside Park N12 7BY
£799,950 Freehold

Totteridge Office:

74 Totteridge Lane, Totteridge, London N20 8QG **Tel: 020 8445 3132 Fax: 020 8445 4492** Email: totteridge@realestates-wsp.co.uk

Real Estates on behalf of themselves and for the vendors of these properties whose agents they are, give notice that: (1) These particulars or any part of these particulars do not constitute a contract or an offer. (2) All statements made in these particulars relating to these properties are made without responsibility on the part of Real Estates or the Vendor. (3) Any intending purchaser must satisfy himself by inspection or otherwise as to the correctness of these particulars. (4) Real Estates or any person in their employment has no authority to make or give any warranty or representation whatever in relation to these properties.

Lullington Garth , Woodside Park

Real Estates are delighted to offer or sale this well presented 3 bedroom semi-detached family home in the heart of Woodside Park, situated within the catchment area for primary schools and close to local amenities.

The property comprises 2 separate reception rooms, fitted kitchen, 3 bedrooms, family bathroom, separate wc, approx 80' beautifully maintained rear garden and also offers scope for extension (stpp).

ENTRANCE HALL

RECEPTION 15'7 into bay x 14'6 max (4.75m into bay x 4.42m max)

RECEPTION 15' into bay x 12' max (4.57m into bay x 3.66m max)

KITCHEN 11'8 max x 9'4 max (3.56m max x 2.84m max)

1ST FLOOR:

BEDROOM 16' into bay x 12'3 into cupboard (4.88m into bay x 3.73m into cupboard)

BEDROOM 12'3 x 11'11 (3.73m x 3.63m)

BEDROOM 9'5 x 8'7 (2.87m x 2.62m)

BATHROOM

SEPARATE WC

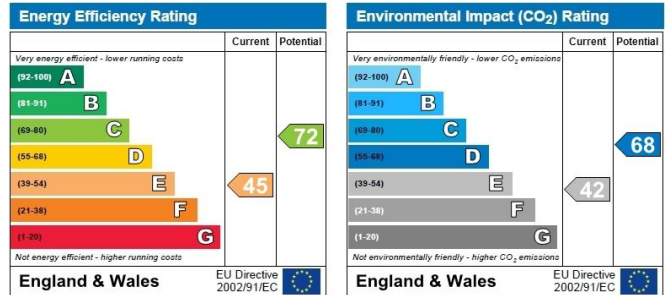
EXTERIOR:

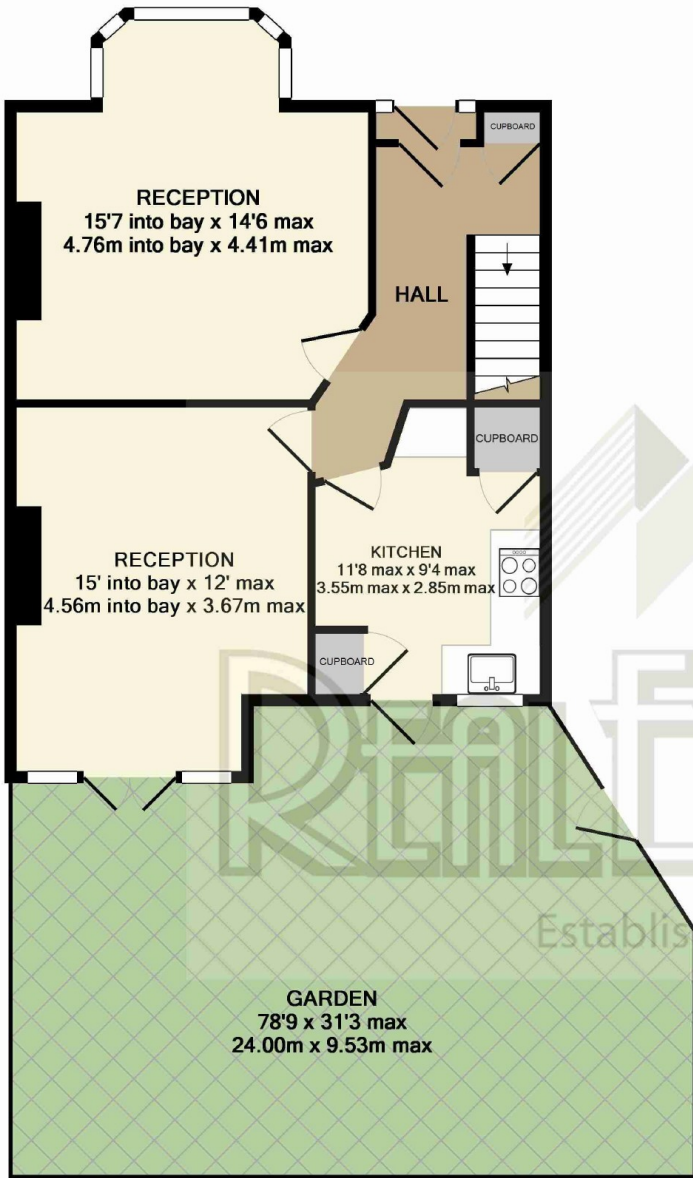
REAR GARDEN 78'9 x 31'3 max (24.00m x 9.53m max)

Viewing:

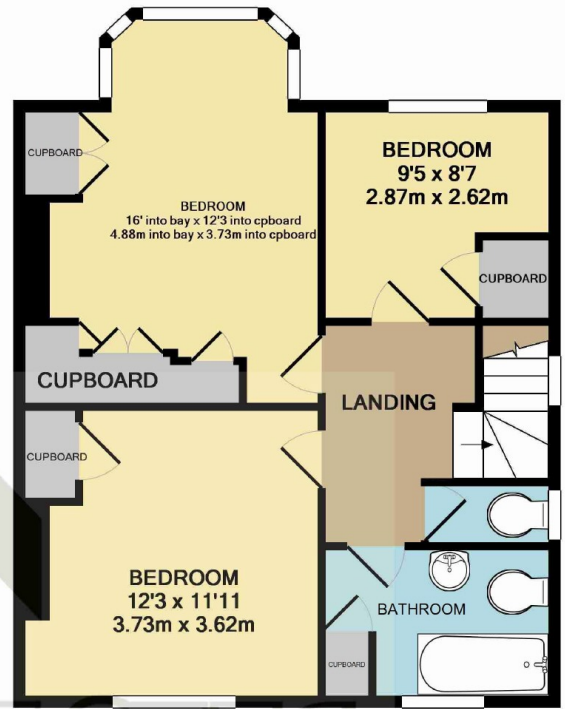
By prior appointment with the vendors agent Real Estates Tel: 020 8445 6387

You may download, store and use the material for your own personal use and research. You may not republish, retransmit, redistribute or otherwise make the material available to any party or make the same available on any website, online service or bulletin board of your own or of any other party or make the same available in hard copy or in any other media without the website owner's express prior written consent. The website owner's copyright must remain on all reproductions of material taken from this website.





GROUND FLOOR



1ST FLOOR



TOTAL APPROX. FLOOR AREA 1103 SQ.FT. (102.5 SQ.M.)
 GiA measurements are approximate. Not to scale. Illustrative purposes only