



Great Bushey Drive Totteridge N20 8QL £899,950 Freehold

Woodside Park office:

14/14a Sussex Ring - Woodside Park - London N12 7HX

t : 020 8445 6387 f : 020 8445 4492 e : info@realestates-wsp.co.uk

Great Bushey Drive , Totteridge

A fantastic opportunity to acquire this CHAIN FREE 5 bedroom semi-detached chalet style property, boasting STUNNING VIEWS over TOTTERIDGE TENNIS CLUB and GREEN.

Great Bushey Drive is conveniently situated within easy reach of Totteridge & Whetstone Northern Line tube station, together with multiple shopping facilities at Whetstone High Road.

The property has the benefit of a modern fitted kitchen, 2 reception rooms, studio/utility room, 5 bedrooms and family bathroom. Externally there is off street parking and a pretty rear garden backing DOLLIS BROOK.

For further information or to arrange a viewing, please contact the owners SOLE AGENTS REAL ESTATES on 020 8445 3132.

ENTRANCE HALL

GUEST CLOAKROOM

RECEPTION 15'7 x 11'11 (4.75m x 3.63m)

STUDY 9'3 x 7'5 (2.82m x 2.26m)

KITCHEN/RECEPTION 25'8 x 19'2 (7.82m x 5.84m)

UTILITY ROOM/STUDIO 29'8 x 8'8 (9.04m x 2.64m)

1ST FLOOR:

BEDROOM 13'11 x 11'10 (4.24m x 3.61m)

BEDROOM 11'9 x 8'5 (3.58m x 2.57m)

BEDROOM 10'6 x 9' (3.20m x 2.74m)

BEDROOM 11'3 x 7'6 (3.43m x 2.29m)

SHOWER ROOM/WC

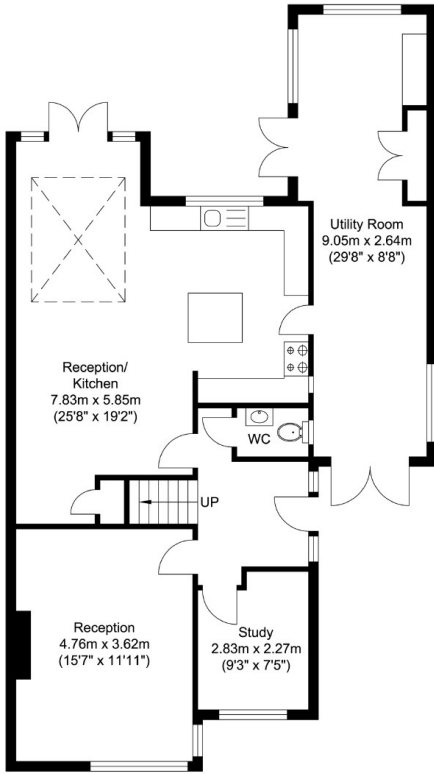
2ND FLOOR:

MASTER BEDROOM 27' x 19'2 (8.23m x 5.84m)

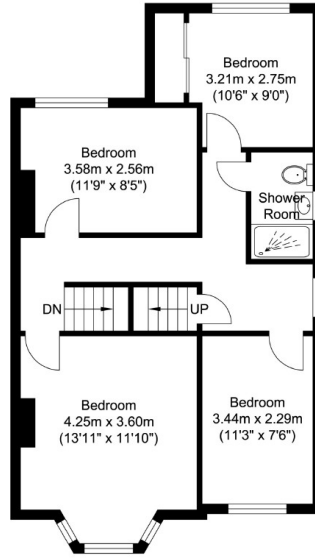
Viewing:

By prior appointment with the vendors agent Real Estates Tel:
0208 445 3132

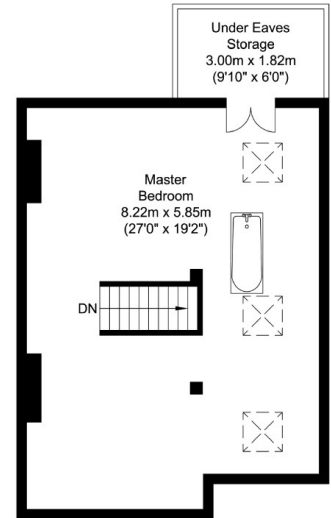
You may download, store and use the material for your own personal use and research. You may not republish, retransmit, redistribute or otherwise make the material available to any party or make the same available on any website, online service or bulletin board of your own or of any other party or make the same available in hard copy or in any other media without the website owner's express prior written consent. The website owner's copyright must remain on all reproductions of material taken from this website.



Ground Floor
Approximate Floor Area
987.26 sq. ft.
(91.72 sq. m)



First Floor
Approximate Floor Area
606.97 sq. ft.
(56.39 sq. m)



Second Floor
Approximate Floor Area
511.50 sq. ft.
(47.52 sq. m)



Total Floor Area
Approximate Floor Area
2105.74 sq. ft.
(195.63 sq. m)