



Greenway
Totteridge N20 8ED
Guide price £1,100,000 Freehold

Greenway , Totteridge

Real Estates are delighted to offer for sale this CHAIN FREE 4 bedroom DETACHED residence situated within walking distance of Totteridge & Whetstone Northern Line tube station together with Whetstone High Road's amenities.

This property REQUIRES MODERNISATION throughout and offers fantastic POTENTIAL FOR EXTENSION subject to the necessary consents.

The house has the benefit of off street parking for 4 cars, an integral garage and a well maintained rear garden which is approximately 100 FT.

An early viewing is highly recommended to avoid disappointment. To arrange an appointment to view please contact the owners SOLE AGENTS REAL ESTATES Totteridge office on 020 8445 3132.

ENTRANCE HALL

GUEST CLOAKROOM

RECEPTION 23'9 x 14'6 (7.24m x 4.42m)

STUDY 12'4 x 7'9 (3.76m x 2.36m)

KITCHEN 12'2 x 9'9 (3.71m x 2.97m)

1ST FLOOR:

BEDROOM 16'3 x 14'6 (4.95m x 4.42m)

BEDROOM 12'2 x 9'11 (3.71m x 3.02m)

BEDROOM 9'6 x 8'2 (2.90m x 2.49m)

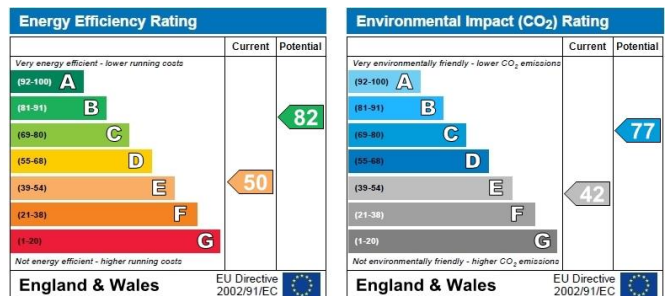
BEDROOM 9'4 x 8'2 (2.84m x 2.49m)

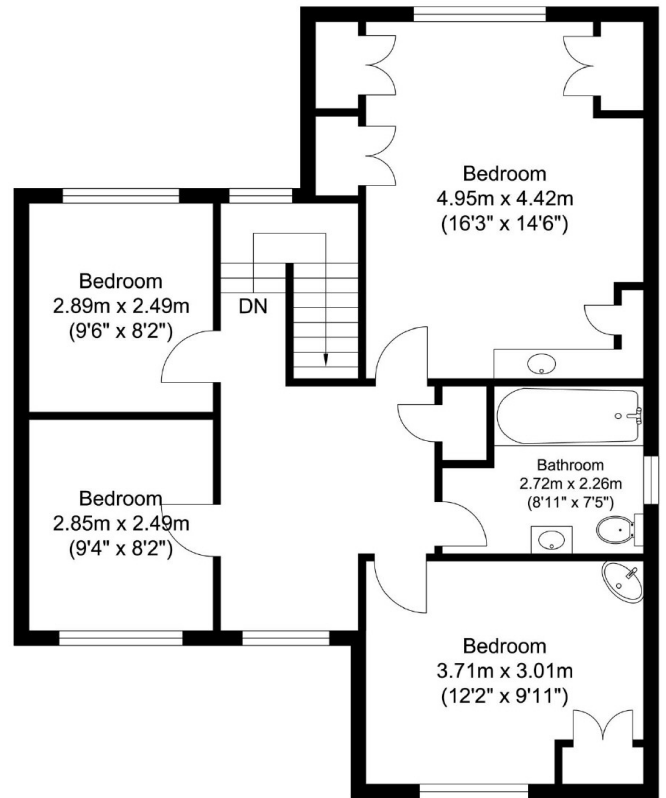
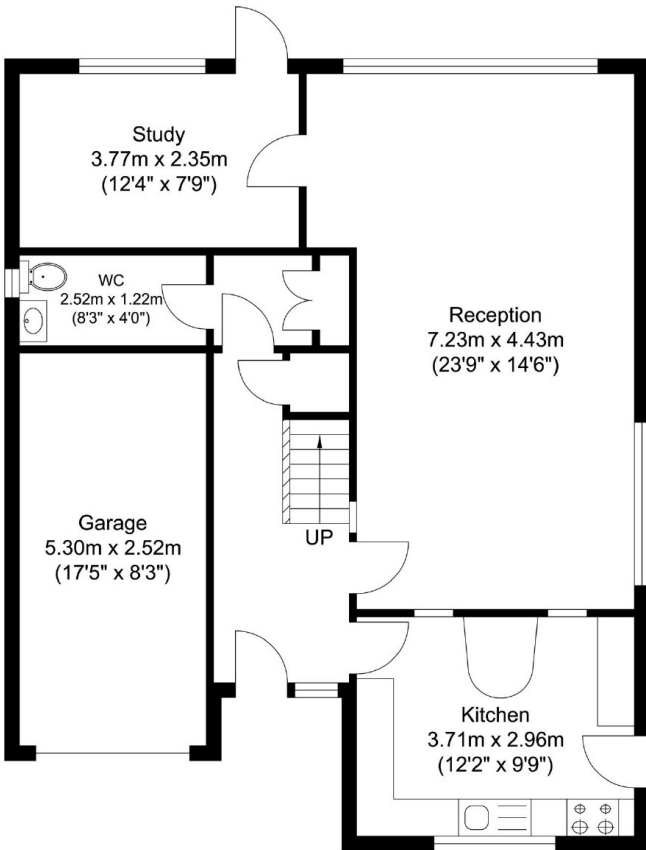
BATHROOM/WC

Viewing:

By prior appointment with the vendors agent Real Estates Tel: 0208 445 3132

You may download, store and use the material for your own personal use and research. You may not republish, retransmit, redistribute or otherwise make the material available to any party or make the same available on any website, online service or bulletin board of your own or of any other party or make the same available in hard copy or in any other media without the website owner's express prior written consent. The website owner's copyright must remain on all reproductions of material taken from this website.





Ground Floor
Approximate Floor Area
840.98 sq. ft.
(78.13 sq. m)



First Floor
Approximate Floor Area
715.80 sq. ft.
(66.50 sq. m)

Total Floor Area
Approximate Floor Area
1556.78 sq. ft.
(144.63 sq. m)