



Fairmead Court

Whetstone N20 9PF

£795,000 Leasehold

Woodside Park office:

14/14a Sussex Ring - Woodside Park - London N12 7HX

t : 020 8445 6387 f : 020 8445 4492 e : info@realestates-wsp.co.uk

Fairmead Court , Whetstone

***CHAIN FREE* PENTHOUSE** with direct passenger LIFT into the apartment. Set back from Whetstone High Road in a secure gated development, within a stone's throw to multiple shopping facilities including Marks & Spencer and Waitrose and Totteridge & Whetstone Northern Line tube station.

The spacious accommodation comprises large lounge open with dining room, separate fitted kitchen, master bedroom with en-suite, 2 further bedrooms and a family bathroom.

Other benefits include 979 year lease with a share in the company owning the freehold. loft storage space, **ALLOCATED PARKING**, **PRIVATE TERRACE** and communal gardens.

For an appointment to view, please contact **SOLE AGENT REAL ESTATES** on 020 8445 3132.

ENTRANCE HALL

Via direct passenger lift.

RECEPTION 19' x 19' (5.79m x 5.79m)

With doors onto private terrace. Open to:

DINING ROOM 19' x 8'8 (5.79m x 2.64m)

KITCHEN 14'8 x 8'11 (4.47m x 2.72m)

MASTER BEDROOM 21'3 x 13' (6.48m x 3.96m)

With En Suite Shower Room.

BEDROOM TWO 12'6 x 11' (3.81m x 3.35m)

BEDROOM THREE 14'3 x 10'6 (4.34m x 3.20m)

BATHROOM/WC

ALLOCATED PARKING

COMMUNAL GARDENS

LEASEHOLD

979 years remaining with a share in the company owning the Freehold

COUNCIL TAX BAND G

£2391.20

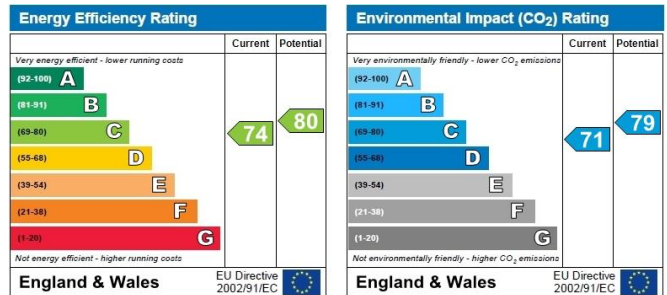
MANAGEMENT FEE

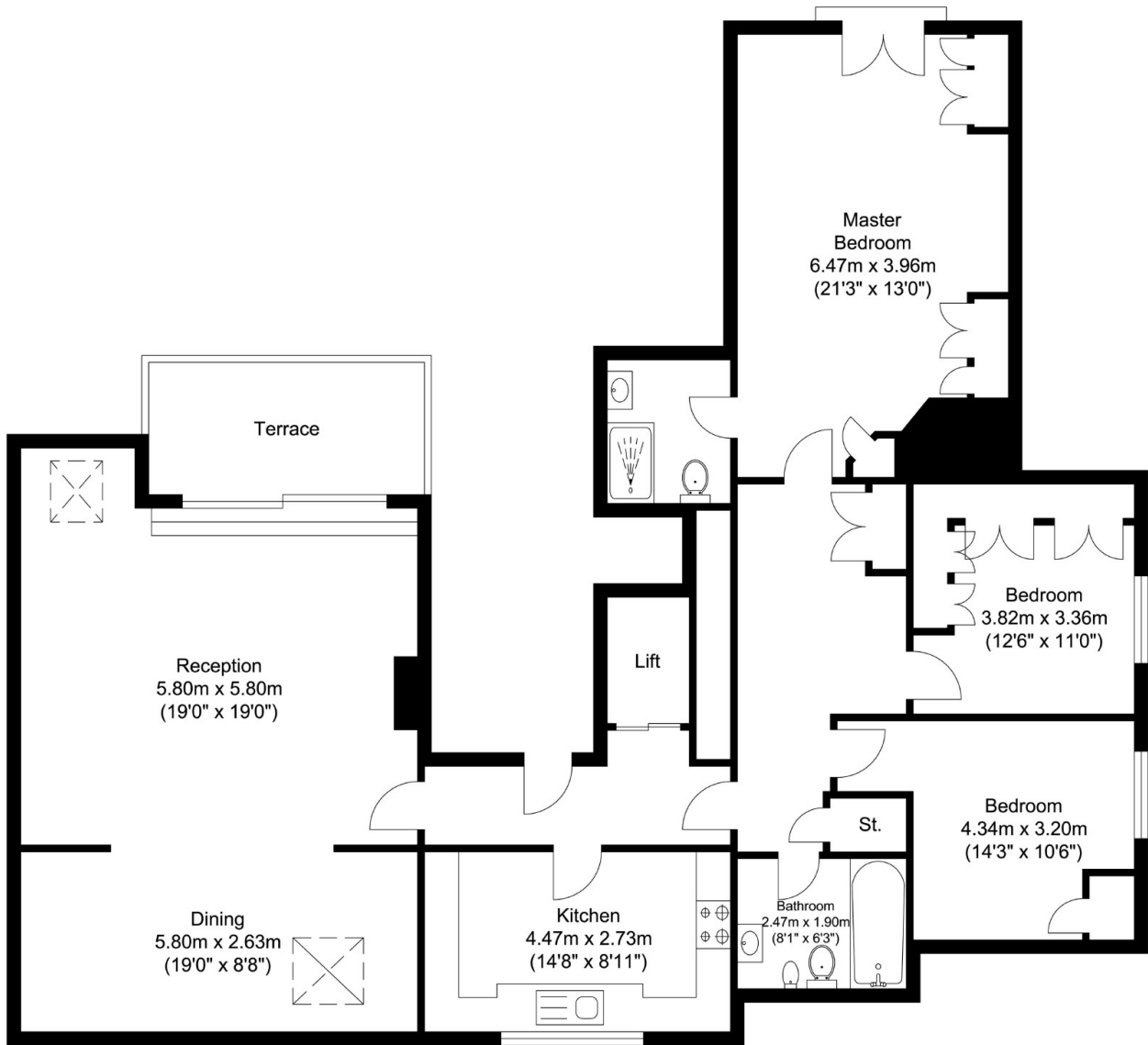
£2644 Includes Buildings Insurance and water rates.

Viewing:

By prior appointment with the vendors agent Real Estates Tel: 0208 445 3132

You may download, store and use the material for your own personal use and research. You may not republish, retransmit, redistribute or otherwise make the material available to any party or make the same available on any website, online service or bulletin board of your own or of any other party or make the same available in hard copy or in any other media without the website owner's express prior written consent. The website owner's copyright must remain on all reproductions of material taken from this website.





Total Floor Area
 Approximate Floor Area
 1504.90 sq. ft.
 (139.81 sq. m)

