



Estate Agents - Residential Sales - Investments - Lettings

**Woodside Park office:**

14/14a Sussex Ring  
Woodside Park  
London N12 7HX

e : [info@realestates-wsp.co.uk](mailto:info@realestates-wsp.co.uk)

t : 020 8445 6387

f : 020 8445 4492

w : [www.realestates-wsp.co.uk](http://www.realestates-wsp.co.uk)



## **Michleham Down**

### **Woodside Park N12 7JL**

### **£1,500,000 Freehold**

**Totteridge office:**

74 Totteridge Lane - Totteridge - London N20 8QG

t : 020 8445 3132

f : 020 8445 4492

e : [totteridge@realestates-wsp.co.uk](mailto:totteridge@realestates-wsp.co.uk)

Real Estates on behalf of themselves and for the vendors of these properties whose agents they are, give notice that: (1) These particulars or any part of these particulars do not constitute a contract or an offer. (2) All statements made in these particulars relating to these properties are made without responsibility on the part of Real Estates or the Vendor. (3) Any intending purchaser must satisfy himself by inspection or otherwise as to the correctness of these particulars. (4) Real Estates or any person in their employment has no authority to make or give any warranty or representation whatever in relation to these properties.

# Michleham Down , Woodside Park

**\*CHAIN FREE\*** Situated in one of Woodside Park's most sought after locations, Real Estates are delighted to offer this well presented 5 bedroom detached family home backing Greenbelt and offering further potential to extend if required (STPP).

The spacious living and entertaining accommodation comprises through lounge/dining room, modern fitted kitchen/diner/family room with doors to patio and garden, utility room, guest cloakroom, master bedroom with en suite bathroom, 4 further bedrooms and family bathroom.

To the rear, there is a beautifully maintained and mature rear garden and the carriage driveway to the front provides off street parking.

## ENTRANCE HALL

## GUEST CLOAKROOM

**FRONT RECEPTION 17'7 into bay x 11'1 (5.36m into bay x 3.38m)**  
Open to:

**REAR RECEPTION 17'10 into bay x 13'1 (5.44m into bay x 3.99m)**  
Doors to patio and garden.

**KITCHEN/DINER/FAMILY ROOM 23'3 max x 19'2 max (7.09m max x 5.84m max)**  
Doors to patio and garden.

**UTILITY ROOM 13'4 x 9' (4.06m x 2.74m)**

## 1ST FLOOR:

**MASTER BEDROOM 17'10 into bay x 13'1 into cupboard (5.44m into bay x 3.99m into cupboard)**

## EN SUITE BATHROOM

**BEDROOM 14'7 x 13'1 (4.45m x 3.99m)**

**BEDROOM 13'9 x 8'3 (4.19m x 2.51m)**

**BEDROOM 13'1 max x 8'11 (3.99m max x 2.72m)**

**BEDROOM 9'6 x 8'2 (2.90m x 2.49m)**

## FAMILY BATHROOM

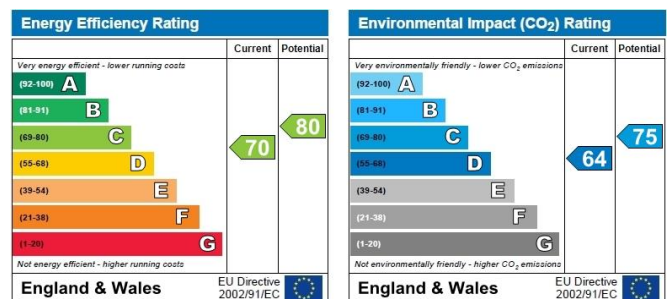
## EXTERIOR:

**REAR GARDEN 74'6 x 36'11 max (22.71m x 11.25m max)**

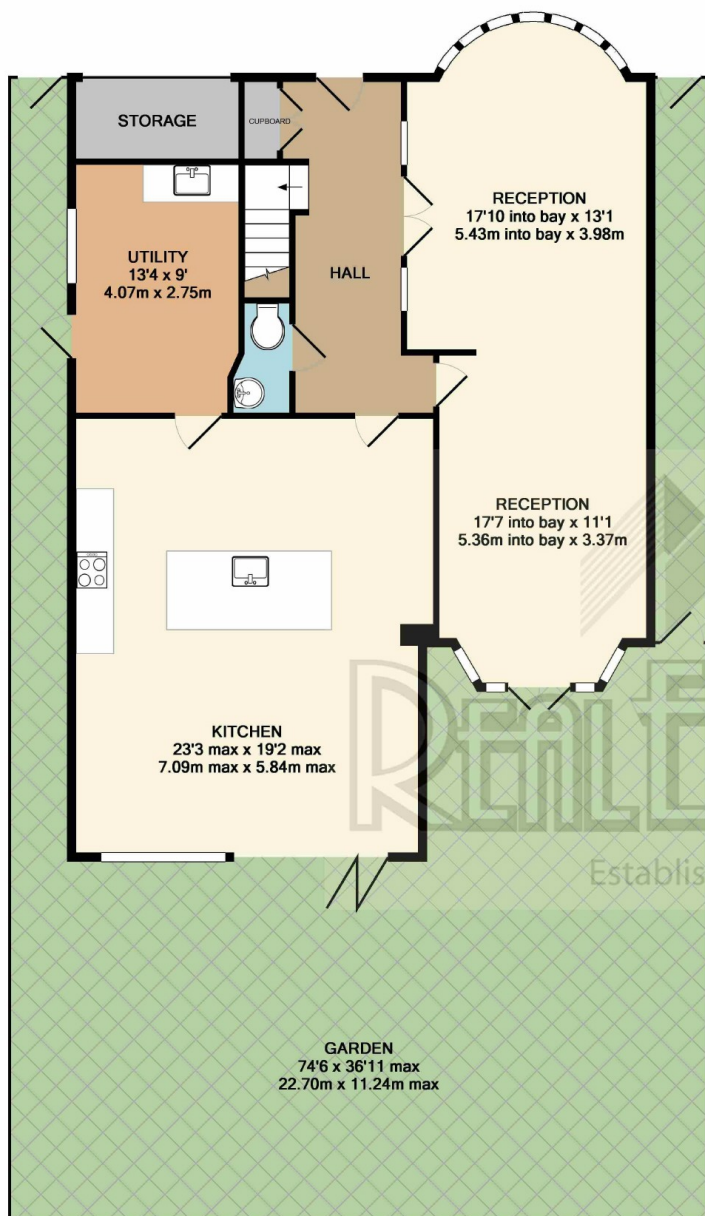
## Viewing:

By prior appointment with the vendors agent Real Estates Tel: 020 8445 6387

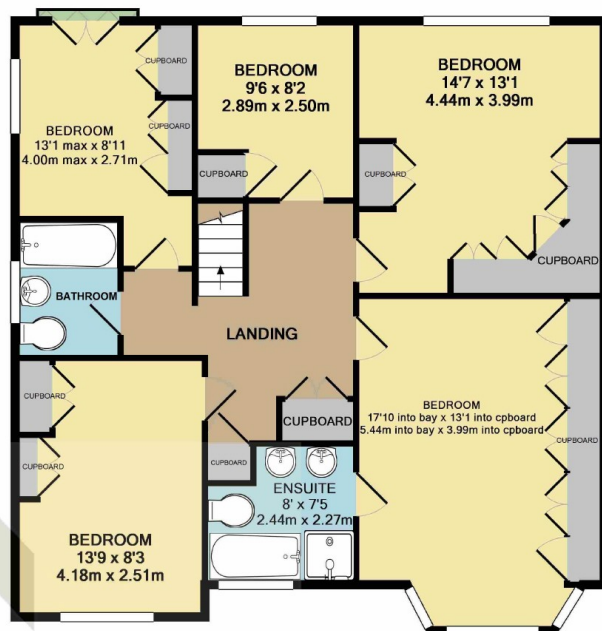
You may download, store and use the material for your own personal use and research. You may not republish, retransmit, redistribute or otherwise make the material available to any party or make the same available on any website, online service or bulletin board of your own or of any other party or make the same available in hard copy or in any other media without the website owner's express prior written consent. The website owner's copyright must remain on all reproductions of material taken from this website.







GROUND FLOOR



1ST FLOOR

TOTAL APPROX. FLOOR AREA 2138 SQ.FT. (198.6 SQ.M.)  
GIA measurements are approximate. Not to scale. Illustrative purposes only