



Chartridge Close
Arkley EN5 3LX
£1,895,000 Freehold

Chartridge Close , Arkley

Real Estates are delighted to offer for sale a newly refurbished 5 bedroom detached family house situated in a sought after, private cul-de-sac in the heart of Arkley.

Constructed by renowned developers Berkeley Homes, this property offers approx 3100 sq ft of stylish accommodation and benefits from a brand new Hacker kitchen/dining room, 3 separate receptions, utility room, guest cloakroom, master suite with dressing room and bathroom, 4 further bedrooms and 2 further bathrooms (1 en suite), double garage, off street parking and a wrap-around garden. The property has further scope to extend subject to necessary planning permission if required.

ENTRANCE HALL 15'5 x 13'11 (4.70m x 4.24m)

DOUBLE GARAGE 19'5 x 18'4 (5.92m x 5.59m)

GUEST CLOAKROOM

Viewing:

By prior appointment with the vendors agent Real Estates Tel: 0208 445 3132

RECEPTION 25'2 x 14' (7.67m x 4.27m)

You may download, store and use the material for your own personal use and research. You may not republish, retransmit, redistribute or otherwise make the material available to any party or make the same available on any website, online service or bulletin board of your own or of any other party or make the same available in hard copy or in any other media without the website owner's express prior written consent. The website owner's copyright must remain on all reproductions of material taken from this website.

STUDY 13'7 x 9'11 (4.14m x 3.02m)

KITCHEN/DINING ROOM 20'9 x 16'7 (6.32m x 5.05m)

FAMILY ROOM 17'2 x 13' (5.23m x 3.96m)

UTILITY ROOM 12'9 x 5'10 (3.89m x 1.78m)

1ST FLOOR:

MASTER BEDROOM 17'10 x 11'11 (5.44m x 3.63m)

DRESSING ROOM

EN SUITE BATHROOM 12'10 x 6'8 (3.91m x 2.03m)

BEDROOM 12'8 x 11'3 (3.86m x 3.43m)

EN SUITE SHOWER ROOM

BEDROOM 14'1 x 9'11 (4.29m x 3.02m)

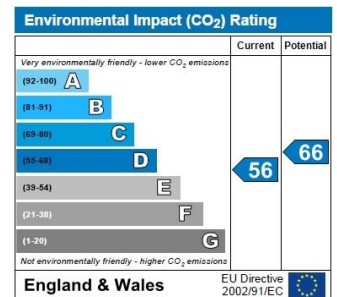
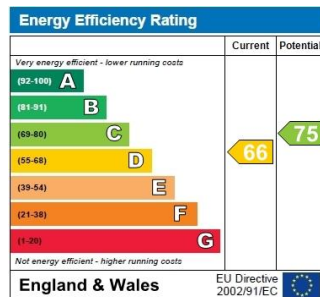
BEDROOM 12'10 x 10'4 (3.91m x 3.15m)

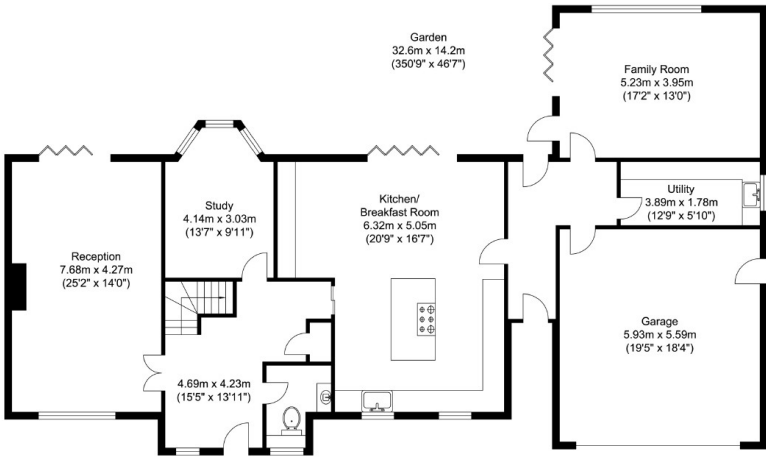
BEDROOM 9'11 x 8'5 (3.02m x 2.57m)

FAMILY BATHROOM

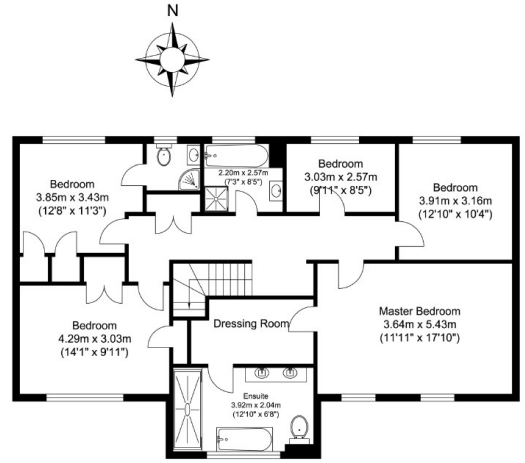
EXTERIOR:

GARDEN 350'9 x 46'7 (106.91m x 14.20m)





Ground Floor
 Approximate Floor Area
 1923.61 sq. ft.
 (178.71 sq. m)



First Floor
 Approximate Floor Area
 1189.30 sq. ft.
 (110.49 sq. m)

Total Floor Area
 Approximate Floor Area
 3112.92 sq. ft.
 (289.20 sq. m)