



**Oak Tree Drive  
Totteridge N20 8QJ  
£950,000 Freehold**

# Oak Tree Drive , Totteridge

A skilfully extended 3 bedroom, 2 bathroom semi-detached property in this sought after location, close to Totteridge & Whetstone Northern Line tube station and multiple shops at Whetstone High Road.

The ground floor accommodation comprises modern open plan kitchen/dining room, separate lounge, study and guest cloakroom. The 1st floor offers a master bedroom with en suite shower room, 2 further bedrooms and family bathroom.

Externally, there is a detached garage, off street parking and rear garden with decking area and lawn.

**ENTRANCE HALL** ` ( )

**GUEST CLOAKROOM**

**STUDY** 9' x 7'5 (2.74m x 2.26m)

**LOUNGE** 15'4 x 11'8 (4.67m x 3.56m)

**KITCHEN/DINER** 19'7 x 19' (5.97m x 5.79m)

**1ST FLOOR:**

**MASTER BEDROOM** 15'10 x 12' (4.83m x 3.66m)

**EN SUITE SHOWER ROOM**

**BEDROOM TWO** 14'1 x 11'8 (4.29m x 3.56m)

**BEDROOM THREE** 11'3 x 7'6 (3.43m x 2.29m)

**FAMILY BATHROOM/WC**

**EXTERIOR:**

**DETACHED GARAGE**

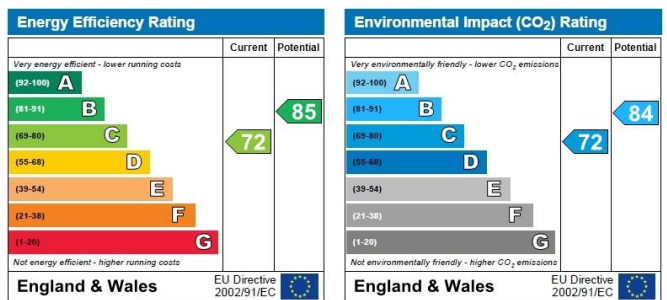
Via own driveway.

**REAR GARDEN**

**Viewing:**

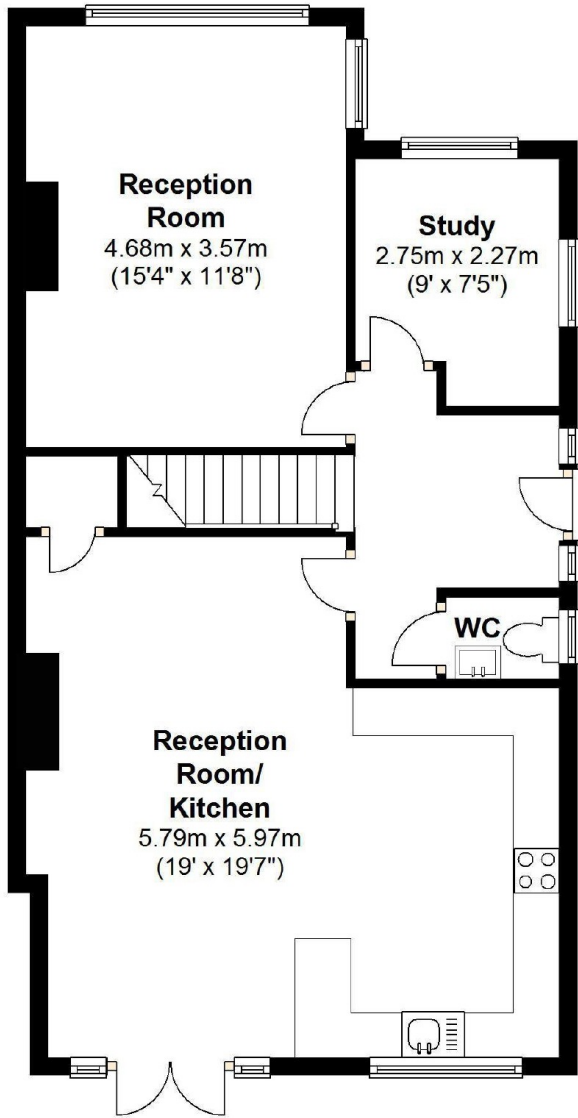
By prior appointment with the vendors agent Real Estates Tel: 0208 445 3132

You may download, store and use the material for your own personal use and research. You may not republish, retransmit, redistribute or otherwise make the material available to any party or make the same available on any website, online service or bulletin board of your own or of any other party or make the same available in hard copy or in any other media without the website owner's express prior written consent. The website owner's copyright must remain on all reproductions of material taken from this website.



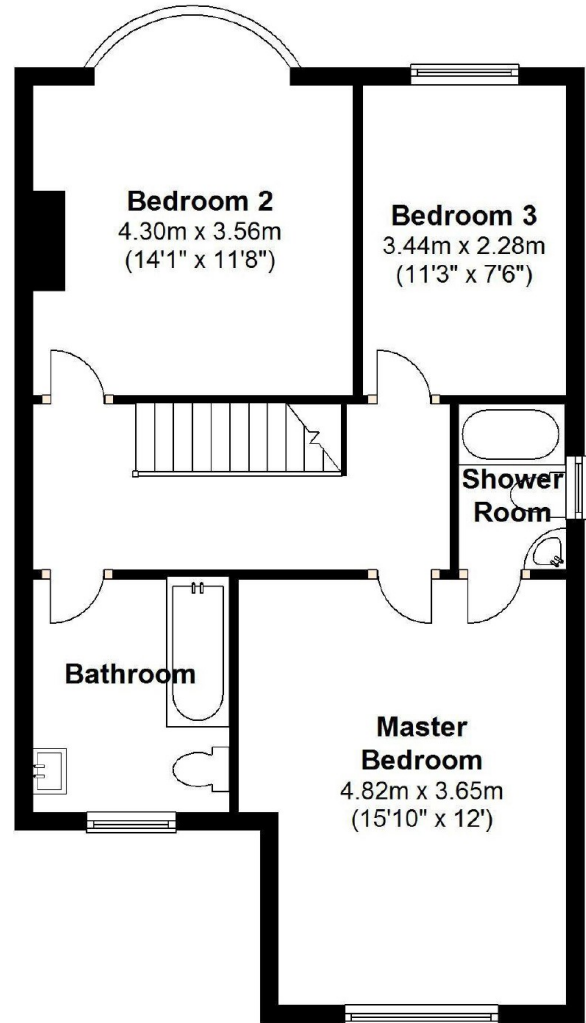
## Ground Floor

Approx. 62.1 sq. metres (668.1 sq. feet)



## First Floor

Approx. 54.1 sq. metres (582.6 sq. feet)



Total area: approx. 116.2 sq. metres (1250.7 sq. feet)

For illustration purposes only - not to scale

