



Chanctonbury Way
Woodside Park N12 7AD
Offers in the region of £850,000 Freehold

Totteridge office:

74 Totteridge Lane - Totteridge - London N20 8QG

t : 020 8445 3132

f : 020 8445 4492

e : totteridge@realestates-wsp.co.uk

Chanctonbury Way , Woodside Park

CHAIN FREE A 3 bedroom semi-detached house situated at the end of this sought after cul-de-sac, set on a plot of approx ONE THIRD OF AN ACRE with views over Greenbelt.

The property currently comprises 3 bedrooms, 2 receptions, guest cloakroom, kitchen, family bathroom and separate wc but offers enormous **POTENTIAL FOR VARIOUS EXTENSIONS** to provide a spacious family home (STPP).

This property requires complete modernisation.

Please contact Sole Agent Real Estates on 020 8445 6387 for an appointment to view.

ENTRANCE HALL

GUEST CLOAKROOM

RECEPTION 15' into bay x 12'3 (4.57m into bay x 3.73m)

RECEPTION 12'10 x 10'10 (3.91m x 3.30m)

KITCHEN 12'8 x 8'3 (3.86m x 2.51m)

1ST FLOOR:

BEDROOM 17'3 into bay x 10'5 max x 8'11 max (5.26m into bay x 3.18m max x 2.72m max)

BEDROOM 10'5 max x 8'11 max (3.18m max x 2.72m max)

BEDROOM 10'5 x 10'4 (3.18m x 3.15m)

BATHROOM

SEPARATE WC

EXTERIOR:

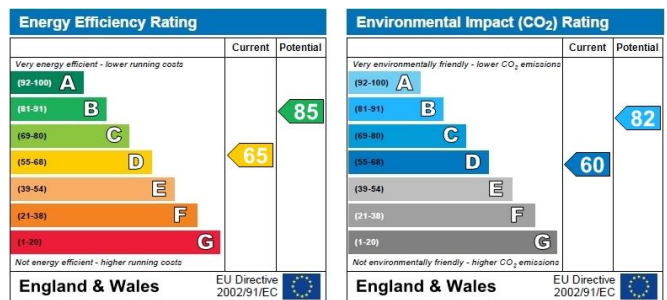
GARAGE 16'7 x 9'2 (5.05m x 2.79m)

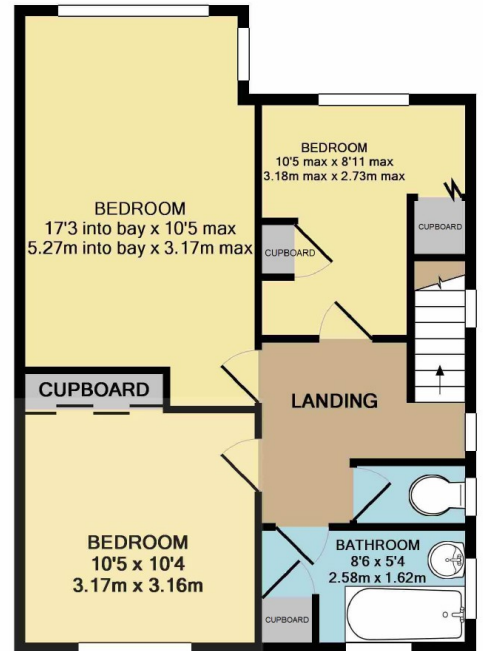
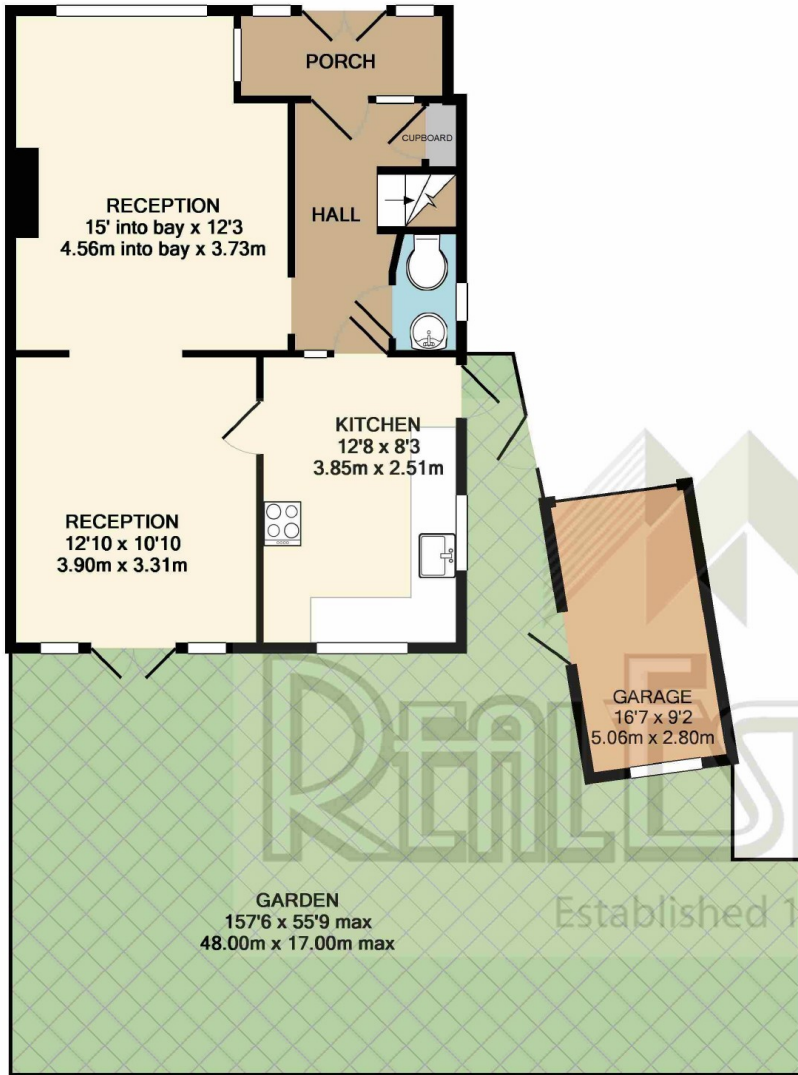
REAR GARDEN 157'6 x 55'9 max (48.01m x 16.99m max)

Viewing:

By prior appointment with the vendors agent Real Estates Tel: 020 8445 6387

You may download, store and use the material for your own personal use and research. You may not republish, retransmit, redistribute or otherwise make the material available to any party or make the same available on any website, online service or bulletin board of your own or of any other party or make the same available in hard copy or in any other media without the website owner's express prior written consent. The website owner's copyright must remain on all reproductions of material taken from this website.





1ST FLOOR

GROUND FLOOR

REAL ESTATES
 Established 1981

(EXCLUDES GARAGE)

TOTAL APPROX. FLOOR AREA 1052 SQ.FT. (97.7 SQ.M.)
 GIA measurements are approximate. Not to scale. Illustrative purposes only

