



Cissbury Ring South
Woodside Park N12 7BG
£850,000 Freehold

Totteridge office:

74 Totteridge Lane - Totteridge - London N20 8QG

t : 020 8445 3132

f : 020 8445 4492

e : totteridge@realestates-wsp.co.uk

Cissbury Ring South , Woodside Park

OFFERED CHAIN FREE - A very well presented 3 bedroom semi-detached family home situated in this sought after turning off Lullington Garth, within easy walking distance to local shops, bus services, Woodside Park Northern Line tube station, parkland and within the catchment area for schools.

The property benefits from double glazing, GARAGE, DOUBLE WIDTH driveway and SOUTH FACING garden, as well as having the POTENTIAL TO EXTEND (stpp).

This family home should be viewed at the first opportunity.

* 3 BEDROOMS * BATHROOM/WC * KITCHEN * GUEST CLOAKROOM * THROUGH LOUNGE/DINING ROOM * DOUBLE GLAZING * GAS CENTRAL HEATING * ATTRACTIVE SOUTH FACING REAR GARDEN * DETACHED GARAGE * DOUBLE WIDTH SHARED DRIVEWAY *

ENTRANCE HALL

GUEST CLOAKROOM

RECEPTION 15'2 into bay x 13'9 (4.62m into bay x 4.19m)
Through to:

RECEPTION 14'4 x 11'10 (4.37m x 3.61m)

KITCHEN 9'5 x 9'4 (2.87m x 2.84m)

1ST FLOOR:

BEDROOM 15'1 into bay x 13'8 into cupb (4.60m into bay x 4.17m into cupb)

BEDROOM 13'10 x 12'4 into cupbd (4.22m x 3.76m into cupbd)

BEDROOM 9'5 x 7'9 (2.87m x 2.36m)

BATHROOM/WC 9'6 x 8'10 (2.90m x 2.69m)

EXTERIOR:

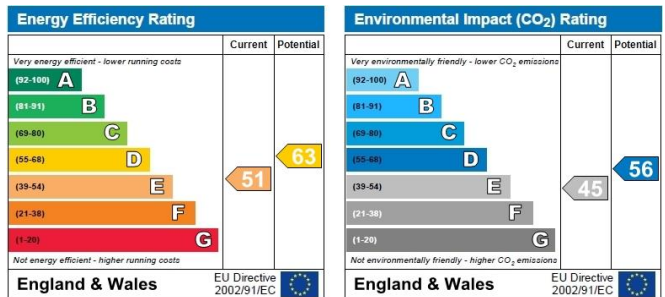
REAR GARDEN 72'2 x 31'2 max (22.00m x 9.50m max)

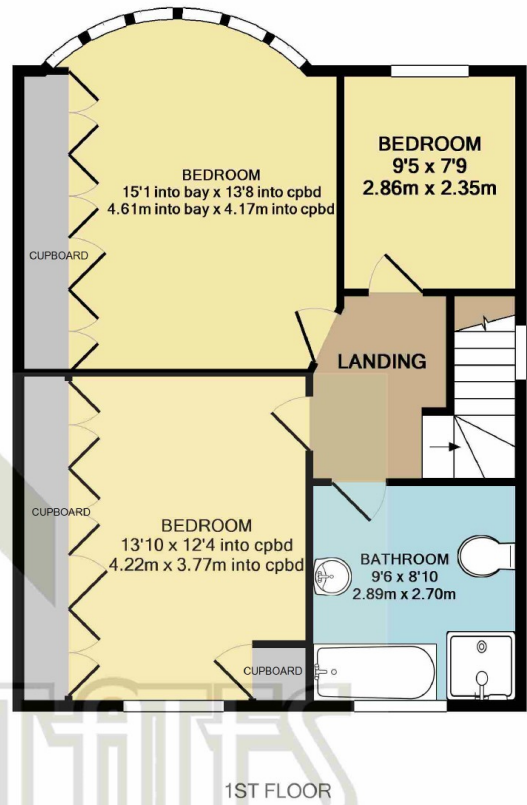
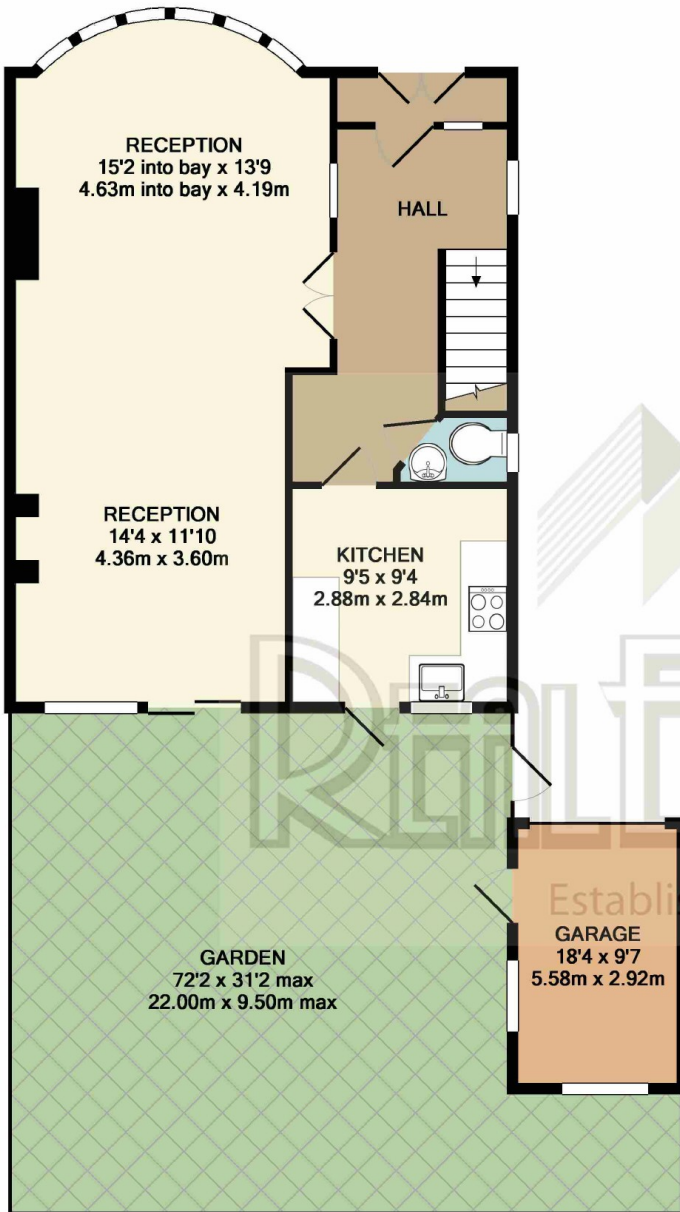
GARAGE 18'4 x 9'7 (5.59m x 2.92m)

Viewing:

By prior appointment with the vendors agent Real Estates Tel: 020 8445 6387

You may download, store and use the material for your own personal use and research. You may not republish, retransmit, redistribute or otherwise make the material available to any party or make the same available on any website, online service or bulletin board of your own or of any other party or make the same available in hard copy or in any other media without the website owner's express prior written consent. The website owner's copyright must remain on all reproductions of material taken from this website.





(EXCLUDES GARAGE)
TOTAL APPROX. FLOOR AREA 1193 SQ.FT. (110.8 SQ.M.)
GIA measurements are approximate. Not to scale. Illustrative purposes only

GROUND FLOOR