



## Northiam

Woodside Park N12 7HJ

**Offers in the region of £1,000,000 Freehold**

Totteridge office:

74 Totteridge Lane - Totteridge - London N20 8QG

t : 020 8445 3132

f : 020 8445 4492

e : [totteridge@realestates-wsp.co.uk](mailto:totteridge@realestates-wsp.co.uk)

# Northiam , Woodside Park

**\*CHAIN FREE\*** We are delighted to bring to the market this Leyland built 4 bedroom, 2 bathroom, 3 reception room link detached house, situated in the heart of Woodside Park, within the catchment area for Woodridge Primary school and convenient for Woodside Park Northern Line tube station, local parkland and shops.

This property offers great potential for further extension (stpp) and upgrading and benefits from a garage and off street parking for 2-3 cars.

Early viewing is highly recommended through Sole Agent Real Estates 020 8445 6387.

## ENTRANCE HALL

## GUEST CLOAKROOM

RECEPTION 18'1 into bay x 13'2 (5.51m into bay x 4.01m)

RECEPTION 15'3 into bay x 12'2 (4.65m into bay x 3.71m)

RECEPTION 12'11 x 7'8 (3.94m x 2.34m)

KITCHEN 12'11 max x 8'11 max (3.94m max x 2.72m max)

## 1st floor:

BEDROOM 17'8 into bay x 13'2 into cpbd (5.38m into bay x 4.01m into cpbd)

## EN SUITE BATHROOM

BEDROOM 15'5 into bay x 12'3 (4.70m into bay x 3.73m)

BEDROOM 12'7 x 7'9 max (3.84m x 2.36m max)

BEDROOM 12' max x 7'9 max (3.66m max x 2.36m max)

## FAMILY BATHROOM/WC

## Exterior:

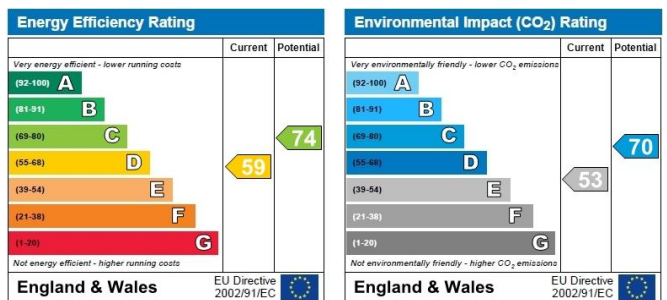
REAR GARDEN 65'7 x 32'9 max (19.99m x 9.98m max)

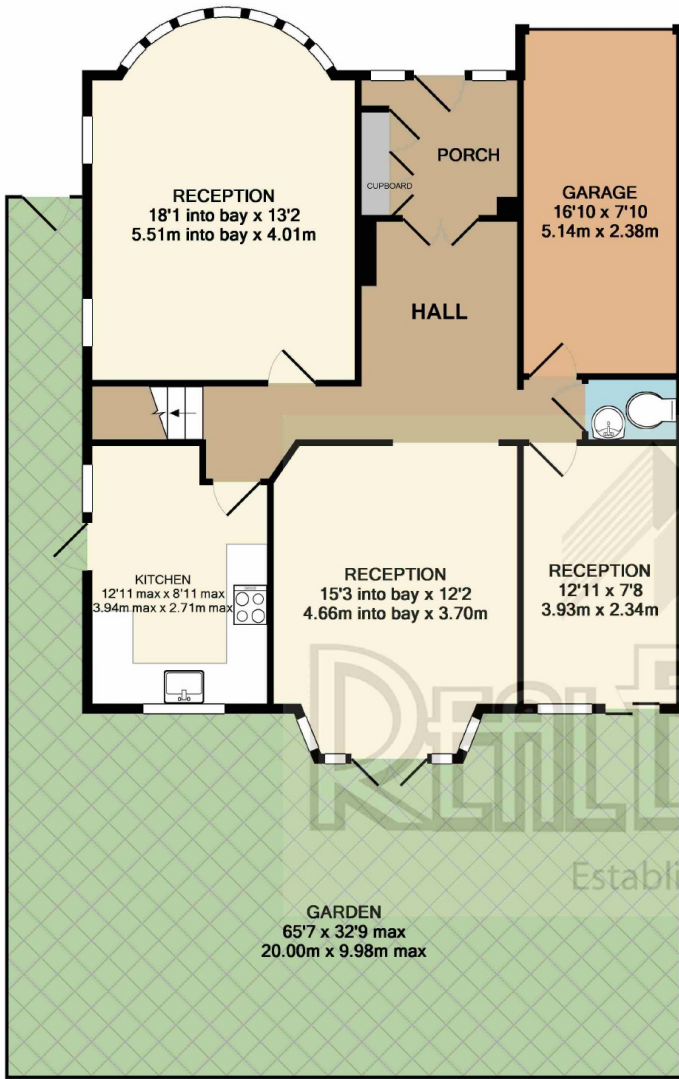
GARAGE 16'10 x 7'10 (5.13m x 2.39m)

## Viewing:

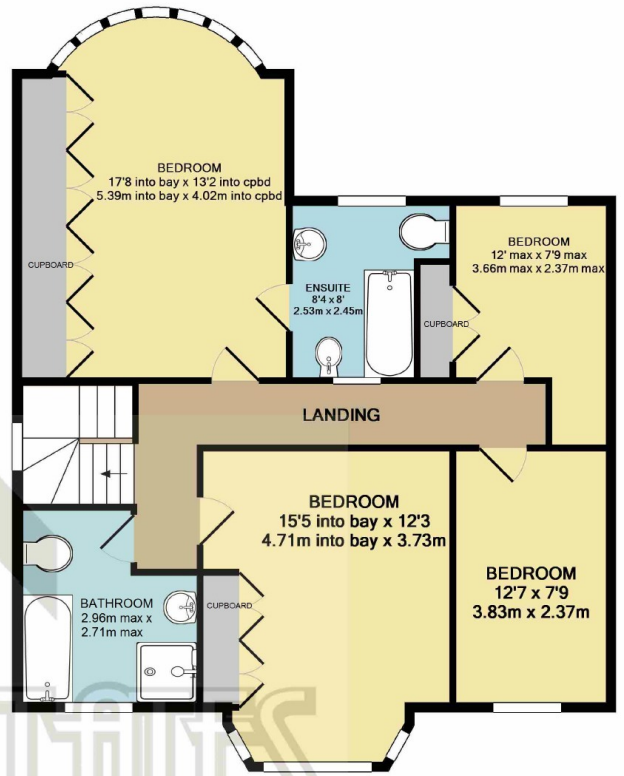
By prior appointment with the vendors agent Real Estates Tel: 020 8445 6387

You may download, store and use the material for your own personal use and research. You may not republish, retransmit, redistribute or otherwise make the material available to any party or make the same available on any website, online service or bulletin board of your own or of any other party or make the same available in hard copy or in any other media without the website owner's express prior written consent. The website owner's copyright must remain on all reproductions of material taken from this website.





GROUND FLOOR



1ST FLOOR

Established 1981

TOTAL APPROX. FLOOR AREA 1784 SQ.FT. (165.7 SQ.M.)  
GIA measurements are approximate. Not to scale. Illustrative purposes only. Not for valuation

