



**Cissbury Ring South**  
**Woodside Park N12 7BG**  
**£2,700 Per calendar month**

Totteridge office:

74 Totteridge Lane - Totteridge - London N20 8QG

t : 020 8445 3132

f : 020 8445 4492

e : [totteridge@realestates-wsp.co.uk](mailto:totteridge@realestates-wsp.co.uk)

# Cissbury Ring South , Woodside Park

A recently refurbished semi-detached family home, situated within the catchment area for Frith Manor Primary School and benefiting from 153 ft south facing garden, with views over Finchley Golf Course.

This 3 bedroom property also comprises through lounge/dining room, extended kitchen/breakfast room, guest cloakroom, family bathroom, garage and off street parking.

**\* AVAILABLE NOW \* UNFURNISHED \***

## ENTRANCE HALL

## GUEST CLOAKROOM

## RECEPTION 16'2 into bay x 14'5 (4.93m into bay x 4.39m)

Front aspect bay. Open to

## RECEPTION 15' into bay x 11'11 (4.57m into bay x 3.63m)

Door to garden.

## KITCHEN 23'4 x 11'6 max (7.11m x 3.51m max)

## 1ST FLOOR:

## BEDROOM 16' into bay x 12'2 into cupboard (4.88m into bay x 3.71m into cupboard)

Front aspect bay.

## BEDROOM 12'3 into cupboard x 11'11 (3.73m into cupboard x 3.63m)

## BEDROOM 9'2 x 8'8 (2.79m x 2.64m)

## BATHROOM/WC 9'1 x 9'1 (2.77m x 2.77m)

## EXTERIOR:

## REAR GARDEN 153'7 x 29'1 max (46.81m x 8.86m max)

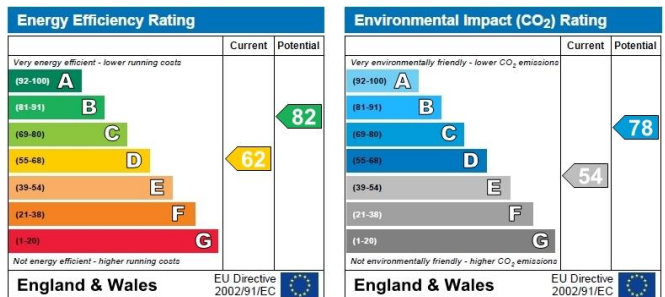
South facing.

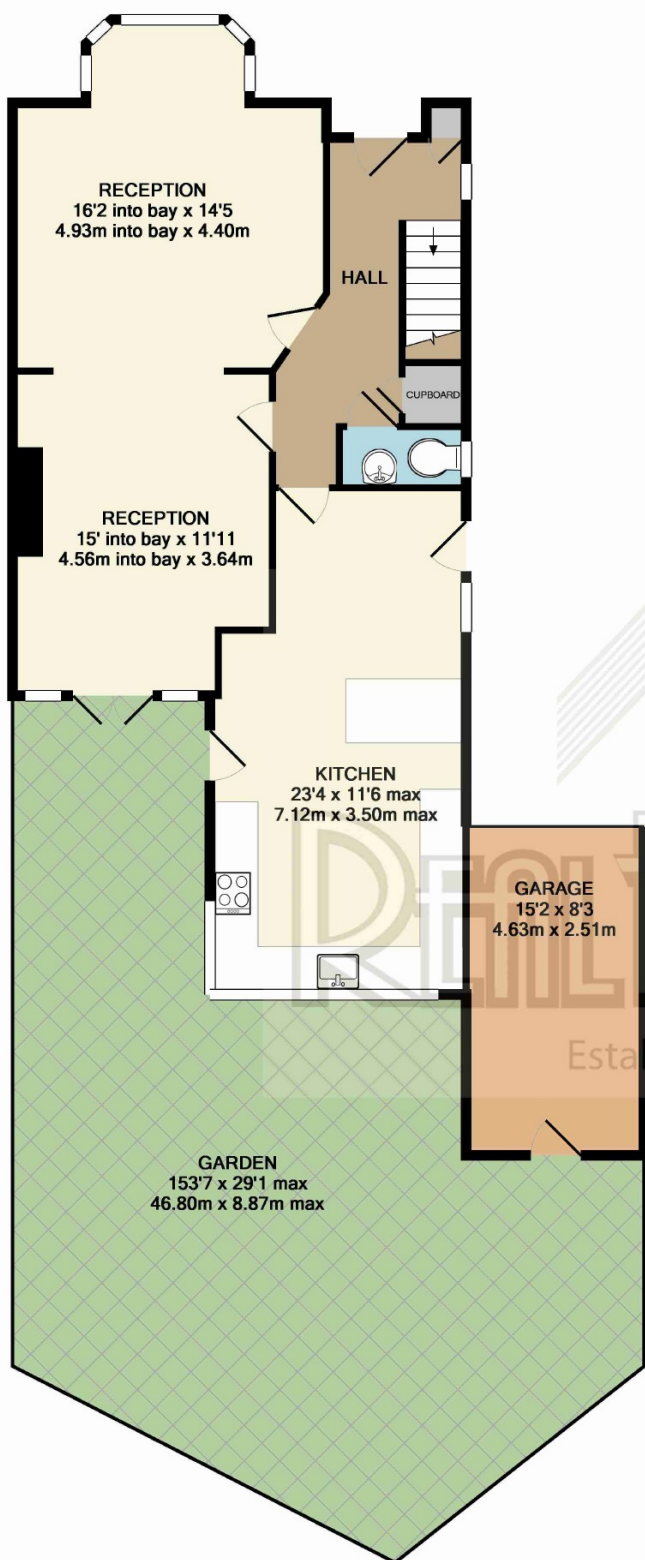
## GARAGE 15'2 x 8'3 (4.62m x 2.51m)

## Viewing:

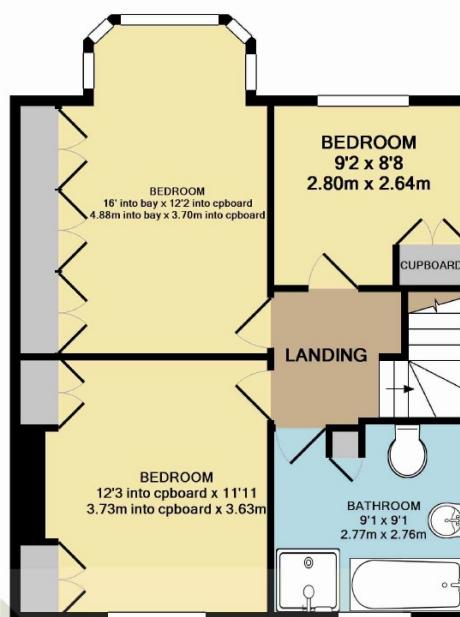
By prior appointment with the vendors agent Real Estates Tel: 020 8445 6387

You may download, store and use the material for your own personal use and research. You may not republish, retransmit, redistribute or otherwise make the material available to any party or make the same available on any website, online service or bulletin board of your own or of any other party or make the same available in hard copy or in any other media without the website owner's express prior written consent. The website owner's copyright must remain on all reproductions of material taken from this website.





GROUND FLOOR



1ST FLOOR

(EXCLUDES GARAGE)  
TOTAL APPROX. FLOOR AREA 1265 SQ.FT. (117.5 SQ.M.)

