



Arlington

Woodside Park N12 7JR

Offers in excess of £900,000 Freehold

Totteridge office:

74 Totteridge Lane - Totteridge - London N20 8QG

t : 020 8445 3132

f : 020 8445 4492

e : totteridge@realestates-wsp.co.uk

Arlington , Woodside Park

* OFFERED CHAIN FREE * FIRST TIME ON THE MARKET * A 1960's built 3 bedroom, 3 bathroom detached chalet style home of approx 1991 sq ft, in this desirable location in the heart of Woodside Park, within the catchment area for Woodridge Primary School as well as being convenient for local shops, Woodside Park Northern Line tube station and Greenbelt.

The property has the benefit of a south facing rear garden, garage and off street parking for 2/3 cars, as well as having the scope to extend (STPP).

Early viewing is highly recommended via Sole Agents Real Estates on 020 8445 6387.

ENTRANCE HALL

GUEST CLOAKROOM/SHOWER ROOM

STUDY 10'9 x 8'11 (3.28m x 2.72m)

RECEPTION 22'10 max x 22' max (6.96m max x 6.71m max)

KITCHEN 10'3 x 9'2 (3.12m x 2.79m)

UTILITY ROOM 11'3 max x 8'3 max (3.43m max x 2.51m max)

CONSERVATORY 11'1 x 10'10 (3.38m x 3.30m)

BEDROOM 12'2 x 11'8 (3.71m x 3.56m)

1ST FLOOR:

BEDROOM 19'5 max x 10'3 max (5.92m max x 3.12m max)

EN SUITE BATHROOM

BEDROOM 13'8 x 9'5 (4.17m x 2.87m)

FAMILY BATHROOM/WC

EXTERIOR:

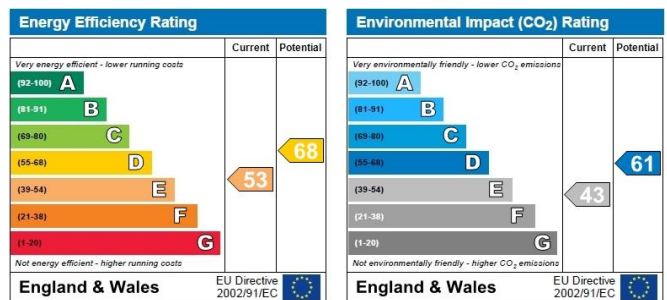
REAR GARDEN 67'3 x 39'8 max (20.50m x 12.09m max)

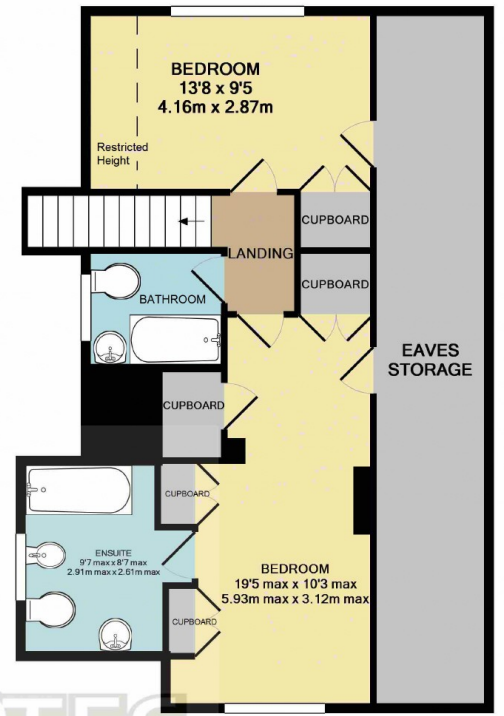
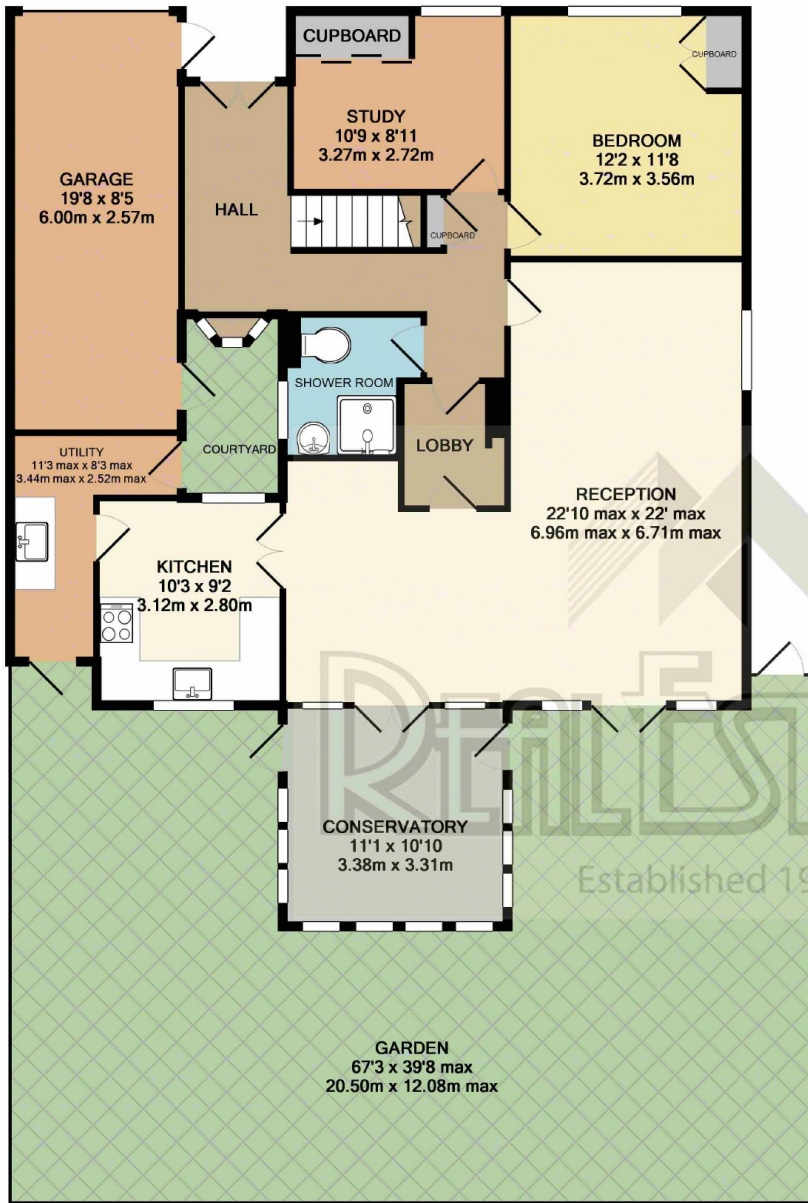
GARAGE 19'8 x 8'5 (5.99m x 2.57m)

Viewing:

By prior appointment with the vendors agent Real Estates Tel: 020 8445 6387

You may download, store and use the material for your own personal use and research. You may not republish, retransmit, redistribute or otherwise make the material available to any party or make the same available on any website, online service or bulletin board of your own or of any other party or make the same available in hard copy or in any other media without the website owner's express prior written consent. The website owner's copyright must remain on all reproductions of material taken from this website.





Established 1981

GROUND FLOOR

TOTAL APPROX. FLOOR AREA: 1991 SQ FT. (185.0 SQ M)
 (All measurements are approximate. Not to scale. Illustrative purposes only. Not for valuation)