



## Northiam

### Woodside Park N12 7HA

**£975,000 Freehold**

Totteridge office:

74 Totteridge Lane - Totteridge - London N20 8QG

t : 020 8445 3132

f : 020 8445 4492

e : [totteridge@realestates-wsp.co.uk](mailto:totteridge@realestates-wsp.co.uk)

# Northiam , Woodside Park

A bright and well presented 4 bedroom 2 bathroom Leyland built semi-detached family home in the heart of Woodside Park offering spacious living and entertaining accommodation.

This spacious property benefits from an extended through lounge/dining room, fitted kitchen/breakfast room, guest cloakroom, 4 bedrooms, 2 bathroom (1 en suite), rear garden and off street parking .

Conveniently situated within the catchment area for primary schools, walking distance to local amenities, parkland, bus services and Woodside Park Northern Line tube station.

Viewing is highly recommended.

**ENTRANCE HALL**

**GUEST CLOAKROOM**

**RECEPTION 16' x 14'10 into bay (4.88m x 4.52m into bay)**  
Open to:

**RECEPTION 21' max x 13'3 (6.40m max x 4.04m)**

**RECEPTION 10'1 max x 9'11 max (3.07m max x 3.02m max)**

**KITCHEN 11'8 x 11'7 (3.56m x 3.53m)**

**1ST FLOOR:**

**BEDROOM 15' into bay x 14'9 (4.57m into bay x 4.50m)**

**BEDROOM 13'5 x 13'1 (4.09m x 3.99m)**

**BEDROOM 9'3 x 8'8 (2.82m x 2.64m)**

**FAMILY BATHROOM**

**2ND FLOOR:**

**BEDROOM 22' x 20'6 (6.71m x 6.25m)**

**EN SUITE SHOWER ROOM**

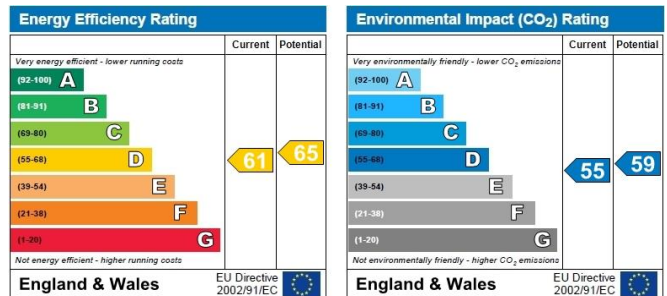
**EXTERIOR:**

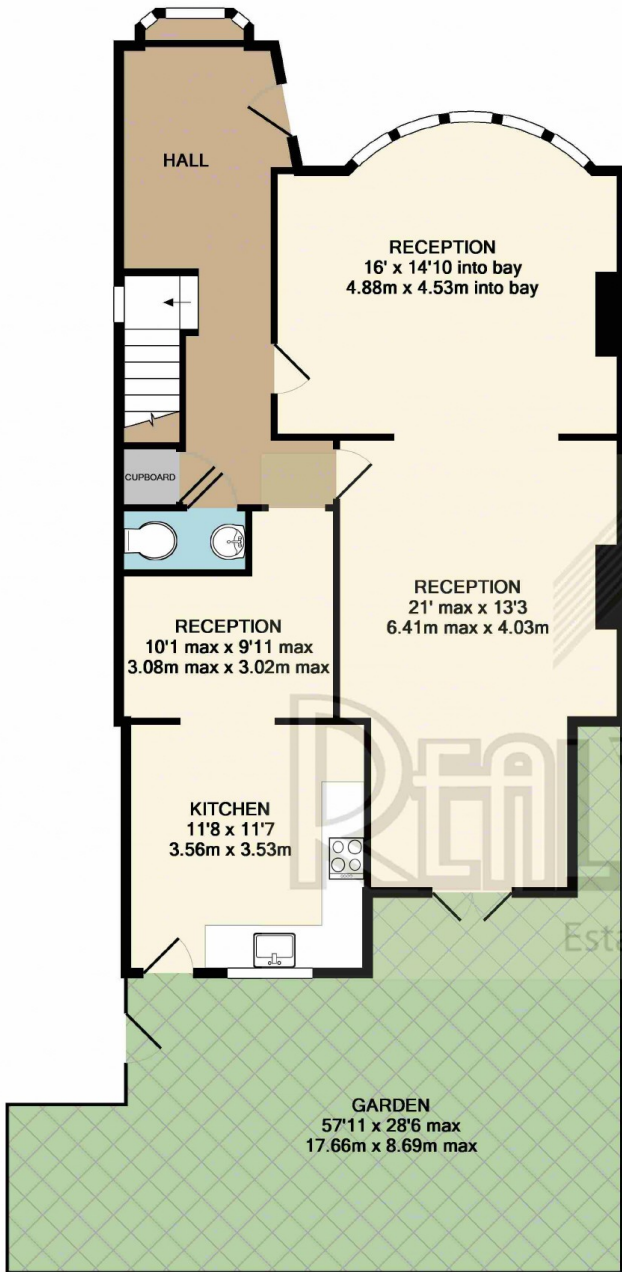
**REAR GARDEN 57'11 x 28'6 max (17.65m x 8.69m max)**

**Viewing:**

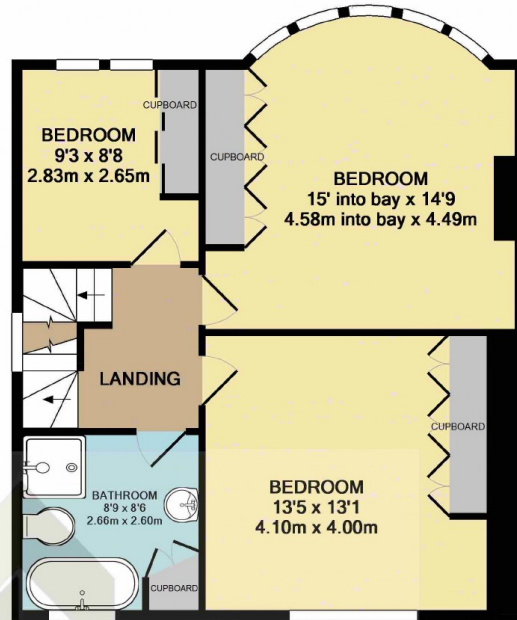
By prior appointment with the vendors agent Real Estates Tel:  
020 8445 6387

You may download, store and use the material for your own personal use and research. You may not republish, retransmit, redistribute or otherwise make the material available to any party or make the same available on any website, online service or bulletin board of your own or of any other party or make the same available in hard copy or in any other media without the website owner's express prior written consent. The website owner's copyright must remain on all reproductions of material taken from this website.

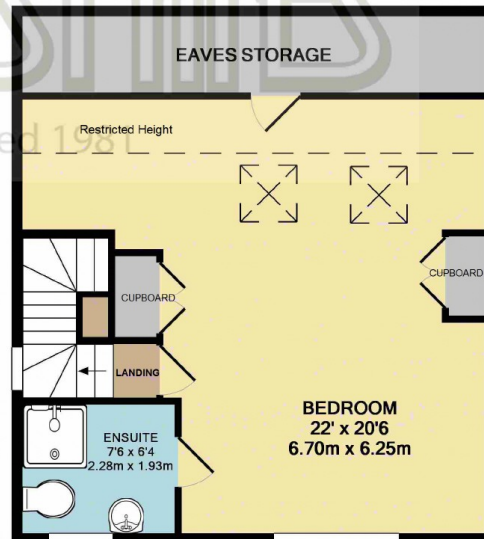




GROUND FLOOR



1ST FLOOR



2ND FLOOR



TOTAL APPROXIMATE AREA 3450 SQ FT (319 SQ M)  
 All measurements are approximate and for guidance only.