



Fetlar Court
Mill Hill NW7 2AY
£385,000 Leasehold

Fetlar Court , Mill Hill

A beautifully presented 2 bedroom 2nd floor flat in this purpose built block within the popular Grosvenor Park development.

This apartment has been extensively refurbished by the current owners and comprises spacious lounge with dining area, fitted kitchen with integrated appliances, modern family bathroom, storage cupboard housing washing machine and boiler room.

Located within approx 1 mile of Mill Hill Broadway's excellent shopping facilities and Thameslink station, this property further benefits from allocated parking space, visitors parking with security barrier (controlled via mobile), communal gardens, entry phone system and long lease.

RECEPTION ROOM 18'6 x 17'3 (5.64m x 5.26m)

Doors to Juliet balcony.

KITCHEN 10'6 x 5'6 (3.20m x 1.68m)

BEDROOM 14'4 x 8'2 (4.37m x 2.49m)

BEDROOM 9'2 x 7'11 (2.79m x 2.41m)

ALLOCATED PARKING SPACE

COMMUNAL GARDENS

GROUND RENT & SERVICE CHARGE

Approx £1100 per annum

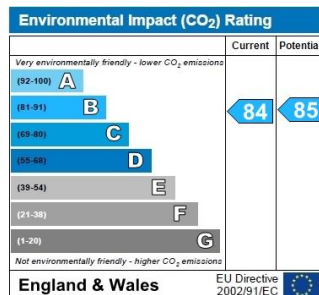
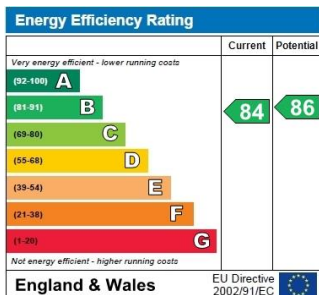
LEASE

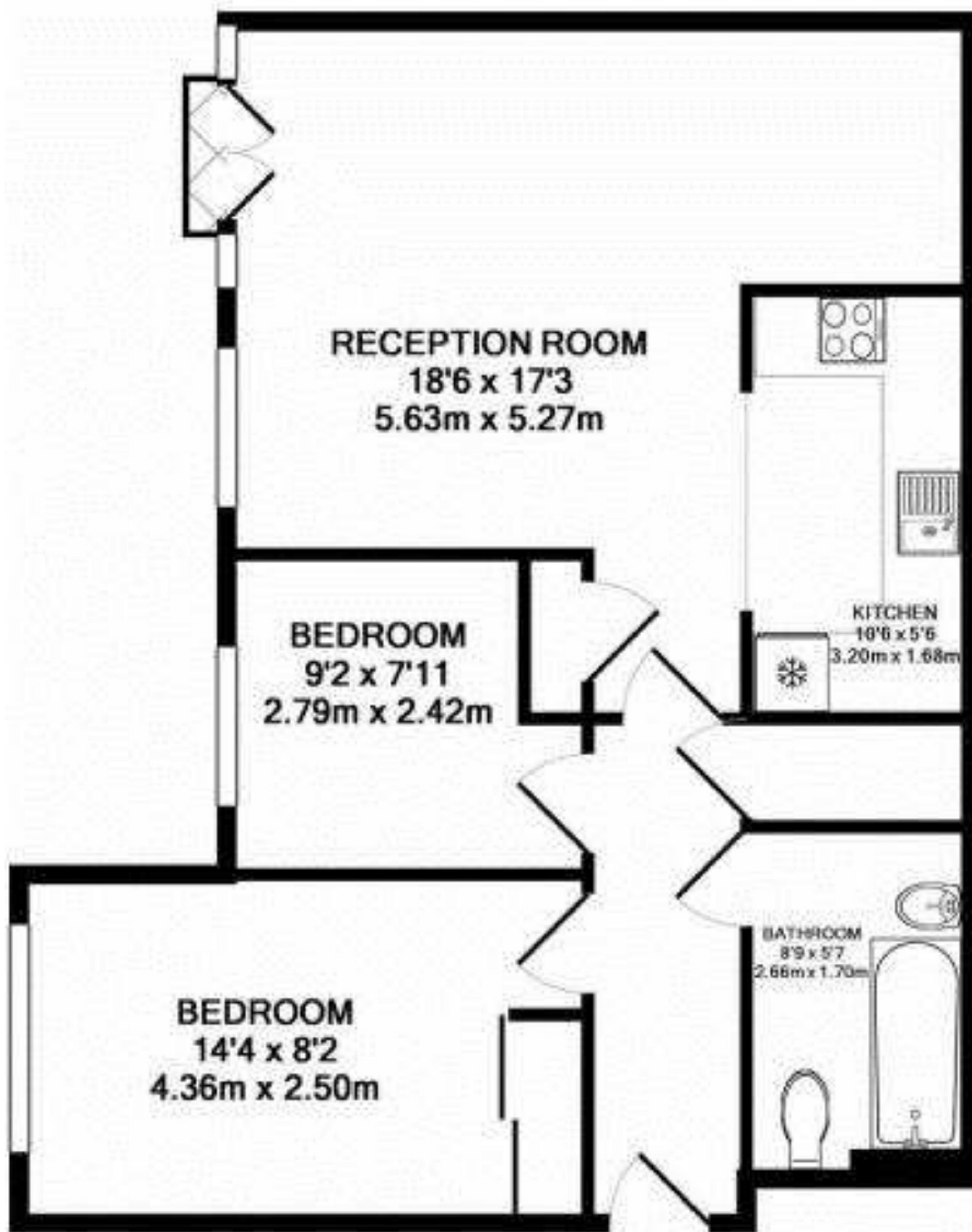
Approx 115 years

Viewing:

By prior appointment with the vendors agent Real Estates Tel: 0208 445 3132

You may download, store and use the material for your own personal use and research. You may not republish, retransmit, redistribute or otherwise make the material available to any party or make the same available on any website, online service or bulletin board of your own or of any other party or make the same available in hard copy or in any other media without the website owner's express prior written consent. The website owner's copyright must remain on all reproductions of material taken from this website.





FETLAR COURT, BRAMPTON DRIVE, NW7
TOTAL APPROX. FLOOR AREA 610 SQ.FT. (56.7 SQ.M.)

Floorplans are for identification and guideline purposes only, not to scale. Compliant with RICS code of measuring practice. Floor plan supplied by Chik Chak Limited.
Made with Metropix ©2018.