



Estate Agents - Residential Sales - Investments - Lettings

Woodside Park office:

14/14a Sussex Ring
Woodside Park
London N12 7HX

e : info@realestates-wsp.co.uk
t : 020 8445 6387
f : 020 8445 4492
w : www.realestates-wsp.co.uk



Pine Grove
Totteridge N20 8LB
£8,500 Per calendar month

Totteridge office:

74 Totteridge Lane - Totteridge - London N20 8QG

t : 020 8445 3132 f : 020 8445 4492 e : totteridge@realestates-wsp.co.uk

Real Estates on behalf of themselves and for the vendors of these properties whose agents they are, give notice that: (1) These particulars or any part of these particulars do not constitute a contract or an offer. (2) All statements made in these particulars relating to these properties are made without responsibility on the part of Real Estates or the Vendor. (3) Any intending purchaser must satisfy himself by inspection or otherwise as to the correctness of these particulars. (4) Real Estates or any person in their employment has no authority to make or give any warranty or representation whatever in relation to these properties.

Pine Grove , Totteridge

An imposing and substantial detached property having been the subject of considerable refurbishment and with the additional benefit of backing directly onto South Herts Golf Club.

Located in one of the most prestigious roads in Totteridge, within easy reach of Totteridge & Whetstone Northern Line tube station and Whetstone High Road.

**** AVAILABLE ** UNFURNISHED ****

- RECEPTION HALL 25'9 x 8'11 (7.85m x 2.72m)

DRESSING ROOM/STUDY 10'2 x 7'7 (3.10m x 2.31m)
With En Suite Shower Room.

DRAWING ROOM 26'1 x 21'2 (7.95m x 6.45m)

BEDROOM SIX 10'10 x 8'10 (3.30m x 2.69m)

DINING ROOM 21'2 x 14' (6.45m x 4.27m)

FAMILY BATHROOM

KITCHEN 21' x 15'5 (6.40m x 4.70m)

EXTERIOR:

BREAKFAST ROOM 11'9 x 11'4 (3.58m x 3.45m)

INTEGRAL GARAGE

GUEST CLOAKROOM

Viewing:
By prior appointment with the vendors agent Real Estates Tel: 020 8445 6387

LOWER GROUND FLOOR:

GAMES ROOM 31'6 x 15'5 (9.60m x 4.70m)

GUEST CLOAKROOM

STAFF SUITE:

BEDROOM 14'3 x 8'2 (4.34m x 2.49m)
With En Suite Shower Room.

UTILITY ROOM 10'2 x 8'11 (3.10m x 2.72m)

1ST FLOOR:

- MASTER BEDROOM 18'9 x 15'8 (5.72m x 4.78m)
With En Suite Bathroom and Dressing Room.

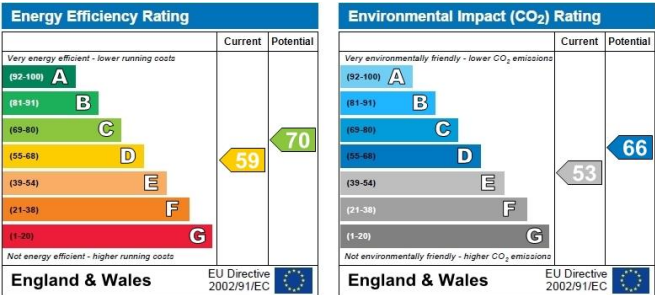
BEDROOM TWO 14'1 x 12' (4.29m x 3.66m)
With En Suite Bathroom.

BEDROOM THREE 12'11 x 11'11 (3.94m x 3.63m)
With En Suite Shower Room.

BEDROOM FOUR 11'9 x 8'11 (3.58m x 2.72m)

2ND FLOOR:

BEDROOM FIVE 13'9 x 10'7 (4.19m x 3.23m)





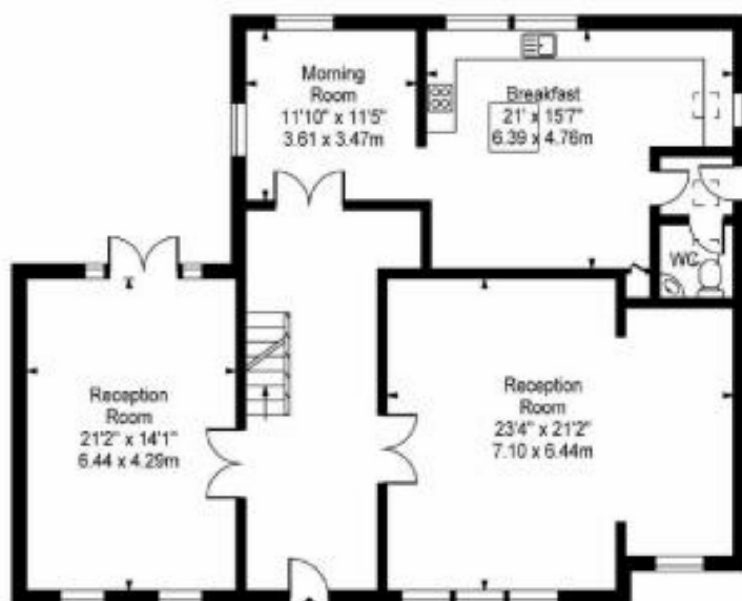
First Floor



Second Floor



Basement



Ground Floor

Approx. Gross Internal Area 5207 Sq Ft - 483.76 Sq M
(Including Garage)