

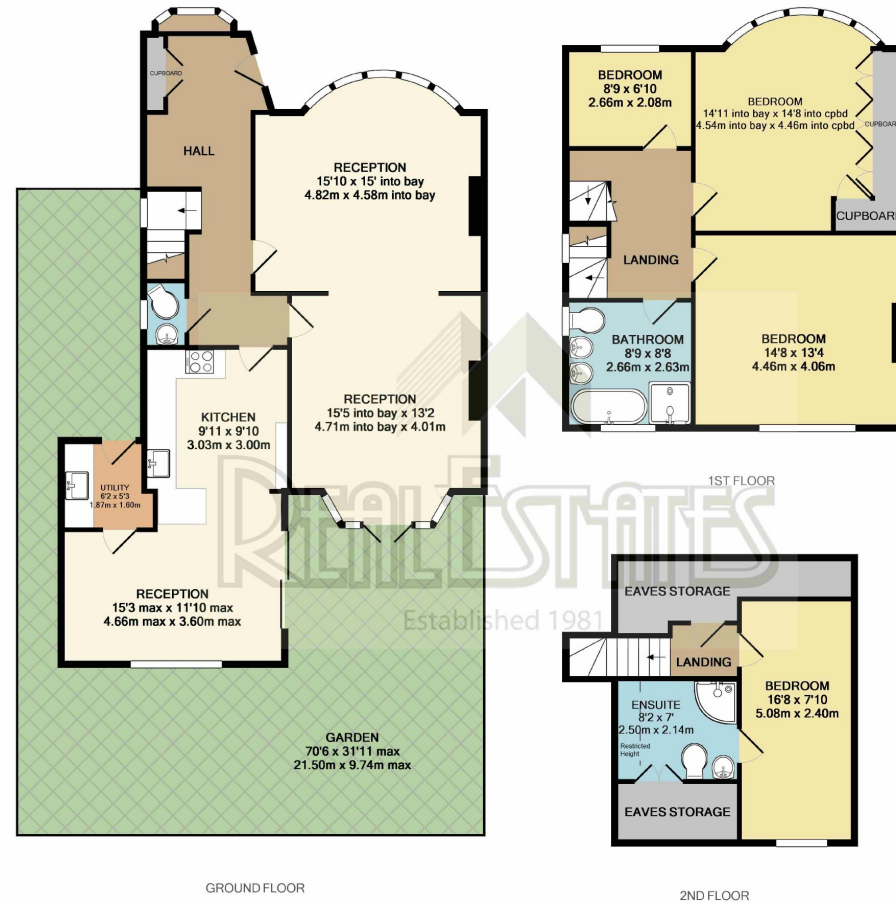


Northiam, Woodside Park
£950,000

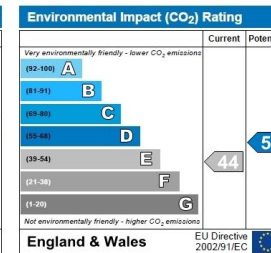
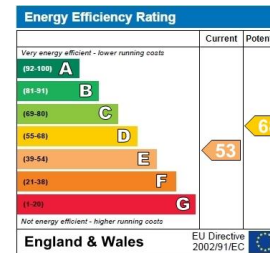
Situated in a sought after location, within easy reach of local shops and transport facilities including Woodside Park Northern Line tube station, Real Estates are delighted to offer this well presented and extended 4 bedroom semi-detached Leyland built family home.

The property is arranged over 3 floors to include a through lounge/dining room, spacious kitchen/breakfast room, utility room, 3 bedrooms and family bathroom to the 1st floor plus a loft room with en suite shower room and the benefit of off street parking.

** Further potential to extend (STPP) ** Chain Free **



TOTAL APPROX. FLOOR AREA 1846 SQ.FT. (171.5 SQ.M.)
 GIA measurements are approximate. Not to scale. Illustrative purposes only. Not for valuation



Woodside Park office: 14/14a Sussex Ring, Woodside Park, London N12 7HX

e : info@realestates-wsp.co.uk

t : 020 8445 6387

f : 020 8445 4492

w : www.realestates-wsp.co.uk



REAL ESTATES

Estate Agents - Residential Sales - Investments - Lettings