



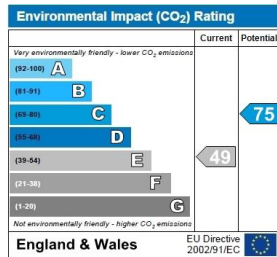
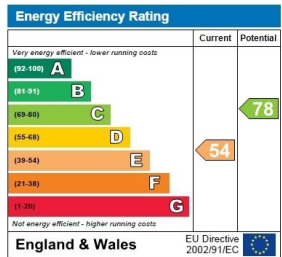
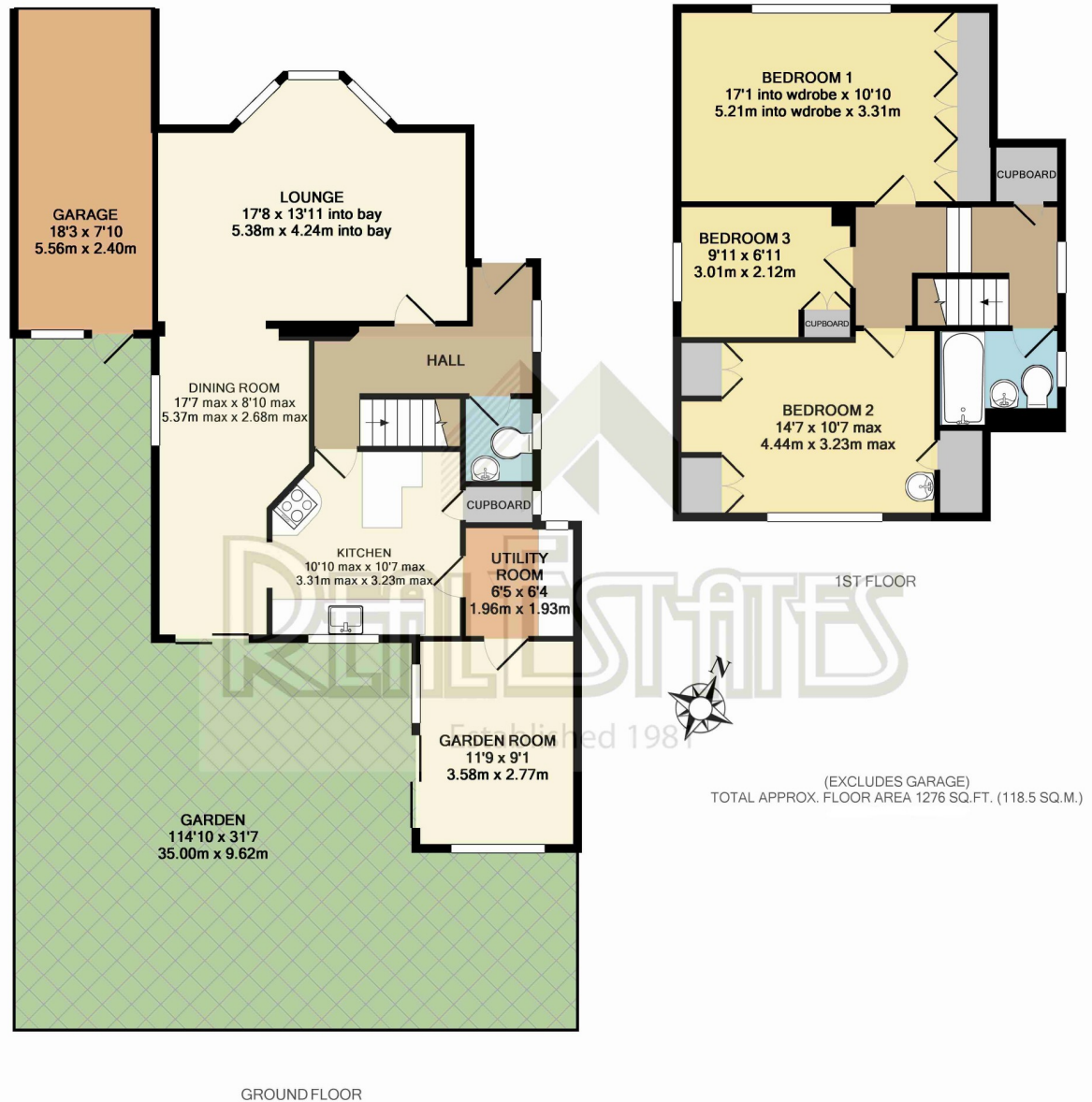
Greenway Close, Totteridge, N208ES  
£895,000



Real Estates are delighted to offer sale this 'cottage style 3 bedroom link-detached house in this sought after cul-de-sac, close to local schools, shops and transport facilities including Totteridge & Whetstone Northern Line tube station.

The property offers further scope to extend if required (stpp) and boasts a well maintained south facing garden measuring approx 114 ft.

Early viewing Highly recommended to avoid disappointment via the sellers sole agents on 020 8445 3132.



Totteridge office: 74 Totteridge Lane, Totteridge, London N20 8QG

e : totteridge@realestates-wsp.co.uk

t : 020 8445 3132

f : 020 8445 4492

w : www.realestates-wsp.co.uk



REAL ESTATES

Estate Agents - Residential Sales - Investments - Lettings