



Northumberland Road New Barnet EN5 1EF £3,750 Per calendar month

Totteridge office:

74 Totteridge Lane - Totteridge - London N20 8QG

t : 020 8445 3132

f : 020 8445 4492

e : totteridge@realestates-wsp.co.uk

Northumberland Road , New Barnet

A substantial 6 bedroom Victorian home having been modernised yet still retaining its original features and charm including working fireplaces and high ceilings.

The spacious accommodation, arranged over 3 floors offers 3 reception rooms, fitted kitchen with dining area, guest cloakroom, utility room, master bedroom with en suite, approx 80 ft rear garden, garage and off street parking.

Located within close proximity to Oakleigh Park Railway Station and Totteridge & Whetstone Northern Line tube station, together with amenities at New Barnet and East Barnet Village.

* AVAILABLE END JULY * FURNISHED/UNFURNISHED *

ENTRANCE HALL

REAR GARDEN extends to 58'2 (extends to 17.73m)

GUEST CLOAKROOM

Viewing:

By prior appointment with the vendors agent Real Estates Tel: 020 8445 6387

RECEPTION 17'11 x 13'7 (5.46m x 4.14m)

You may download, store and use the material for your own personal use and research. You may not republish, retransmit, redistribute or otherwise make the material available to any party or make the same available on any website, online service or bulletin board of your own or of any other party or make the same available in hard copy or in any other media without the website owner's express prior written consent. The website owner's copyright must remain on all reproductions of material taken from this website.

RECEPTION 18'1 x 13'2 (5.51m x 4.01m)

STUDY 11'9 x 10'10 (3.58m x 3.30m)

KITCHEN/DINER 28'9 x 17'9 (8.76m x 5.41m)

UTILITY ROOM

1ST FLOOR:

MASTER BEDROOM 18'2 x 13'3 (5.54m x 4.04m)

Access to Bedroom 4.

EN SUITE BATHROOM

BEDROOM TWO 13'7 x 13'4 (4.14m x 4.06m)

BEDROOM THREE 17'2 x 11'8 (5.23m x 3.56m)

BEDROOM FOUR 11'10 x 10'9 (3.61m x 3.28m)

Also accessed from Bedroom One.

FAMILY BATHROOM

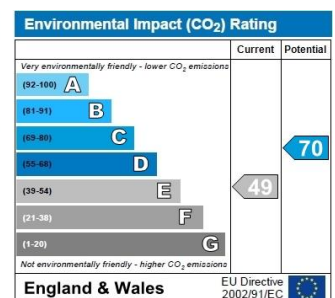
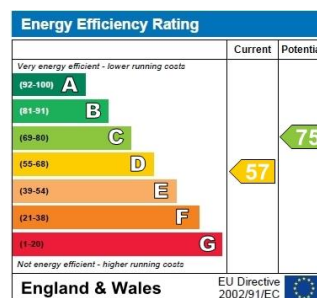
2ND FLOOR:

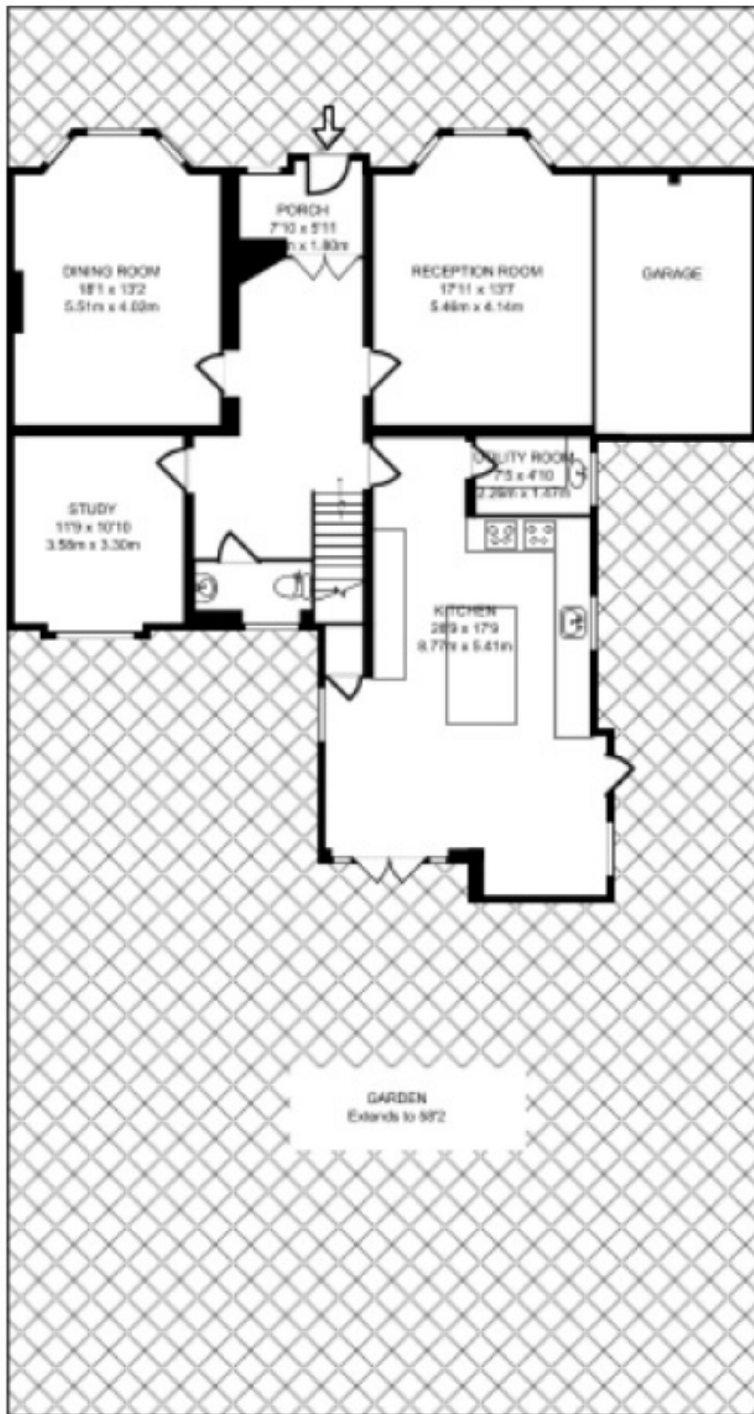
BEDROOM FIVE 22'5 x 21' (6.83m x 6.40m)

Access to:

BEDROOM SIX 18'1 x 17'3 (5.51m x 5.26m)

EXTERIOR:



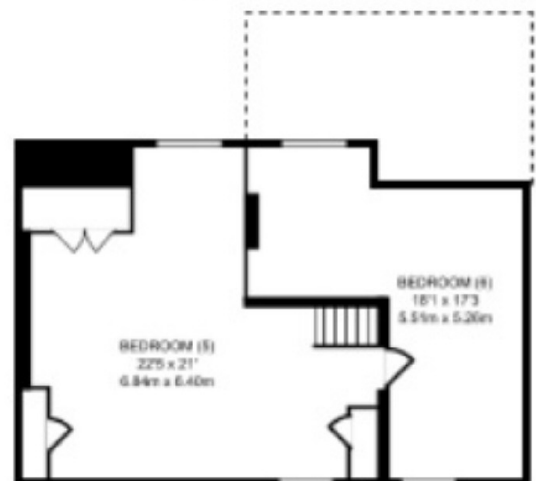


GROUND FLOOR
1,507 SQ FT/140.06 SQ M



FIRST FLOOR

1,164 SQ FT/108.24 SQ M



SECOND FLOOR

641 SQ FT/59.58 SQ M