



Baxendale, Whetstone, N200EG
£825,000

NEW TO THE MARKET and offered CHAIN FREE, is this rarely available 4 bedroom, 2 bathroom end of terrace townhouse requiring some updating and located within a stone's throw of Totteridge & Whetstone Northern Line tube station and local amenities.

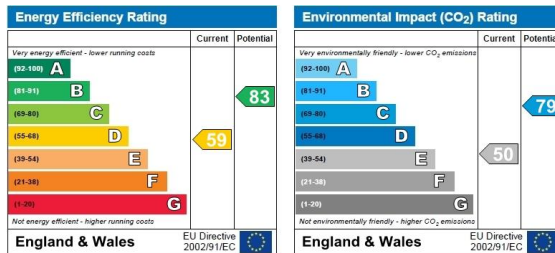
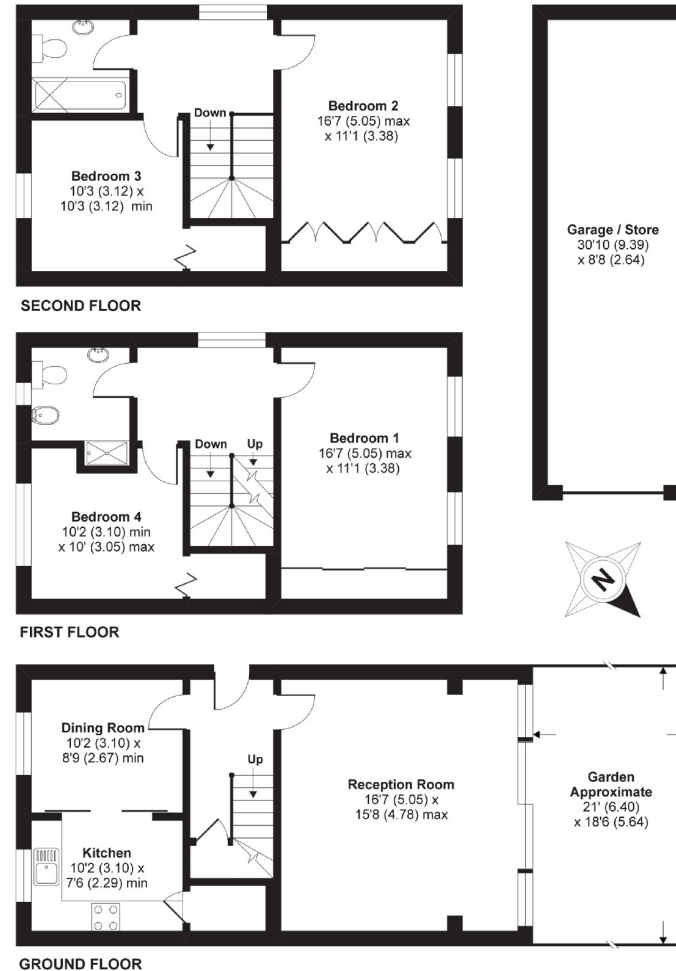
The accommodation includes a fitted kitchen/breakfast area, a spacious reception room with doors onto a patio overlooking the lake, 4 bedrooms and 2 bathrooms. The property also benefits from a double length garage and off street parking for 2/3 cars in front of the garage.

Baxendale boasts stunning views over a private lake, together with a tennis court, squash court and children's play area which are for residents use only.

Early viewing is highly recommended via the sellers sole agent on 020 8445 3132.

Baxendale, Whetstone, London, N20

APPROX. GROSS INTERNAL FLOOR AREA 1719 SQ FT 159.6 SQ METRES (INCLUDES GARAGE)



Whilst every attempt has been made to ensure the accuracy of the floor plan contained here, measurements of doors, windows and rooms are approximate and no responsibility is taken for any error, omission or misstatement. These plans are for representation purposes only as defined by RICS Code of Measuring Practice and should be used as such by any prospective purchaser. Specifically no guarantee is given on the total square footage of the property if quoted on this plan. Any figure given is for initial guidance only and should not be relied on as a basis of valuation.

Copyright nichecom.co.uk 2019 Produced for Real Estates REF : 499766

Woodside Park office: 14/14a Sussex Ring, Woodside Park, London N12 7HX

e : info@realestates-wsp.co.uk

t : 020 8445 6387

f : 020 8445 4492

w : www.realestates-wsp.co.uk



REAL ESTATES

Estate Agents - Residential Sales - Investments - Lettings