



Pyecombe Corner
Woodside Park N12 7AJ
£1,900 Per calendar month

Totteridge office:

74 Totteridge Lane - Totteridge - London N20 8QG

t : 020 8445 3132

f : 020 8445 4492

e : totteridge@realestates-wsp.co.uk

Pyecombe Corner , Woodside Park

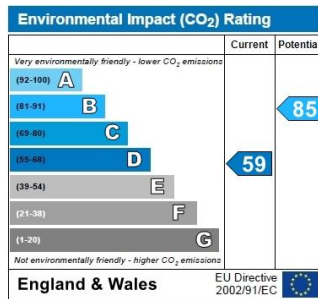
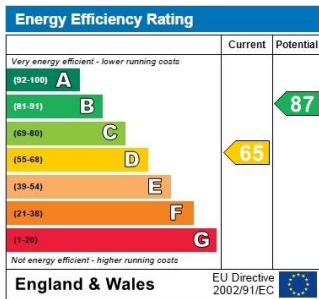
Newly refurbished 3 bedroom semi-detached family home located in a quiet cul-de-sac in the heart of Woodside Park, within the catchment area for primary schools, as well as Woodside Park Northern Line tube station.

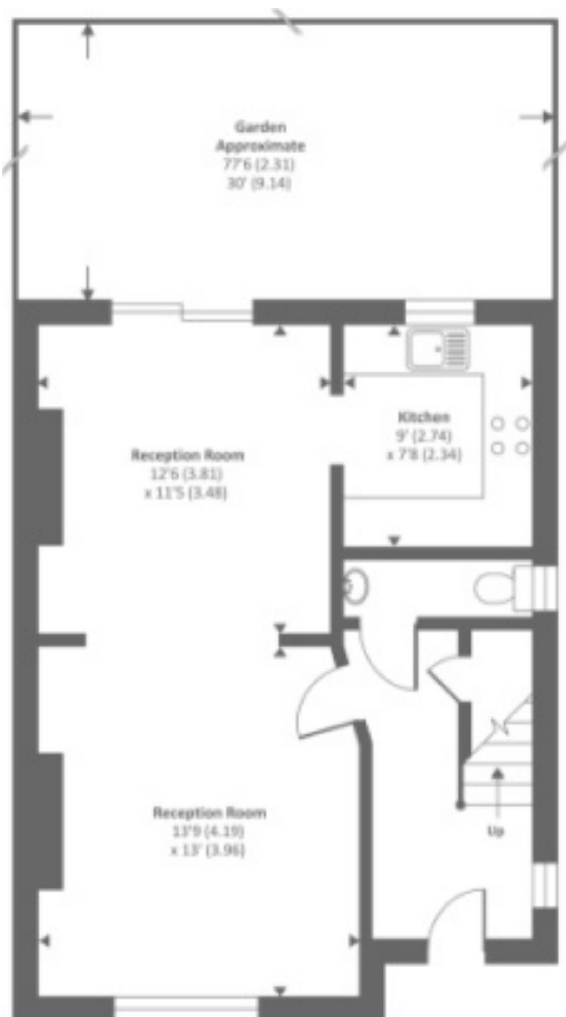
The accommodation includes a spacious thru lounge/diner with doors to a mature rear garden, newly fitted kitchen with appliances, guest cloakroom, 3 large bedrooms with fitted wardrobes, newly tiled family bathroom, garage and off street parking.

Viewing:

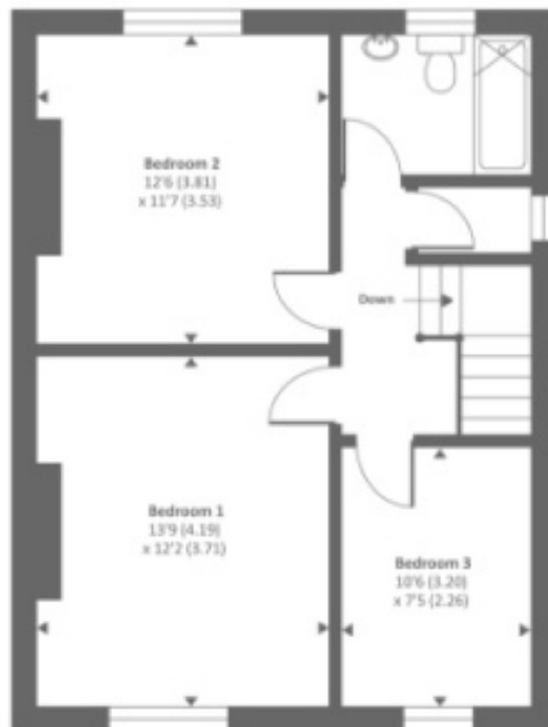
By prior appointment with the vendors agent Real Estates Tel: 020 8445 6387

You may download, store and use the material for your own personal use and research. You may not republish, retransmit, redistribute or otherwise make the material available to any party or make the same available on any website, online service or bulletin board of your own or of any other party or make the same available in hard copy or in any other media without the website owner's express prior written consent. The website owner's copyright must remain on all reproductions of material taken from this website.

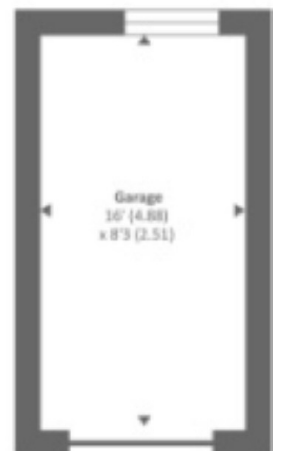




Ground floor



First floor



Approx. gross internal floor area 1203 SQFT / 111.8 SQM (Includes Garage)
 Approx. gross external floor area 1452 SQFT / 134.9 SQM
 Copyright © 2018 Produced for Channel 5 REF: 151024