



Walmington Fold, Woodside Park, N12 7LJ
£782,500

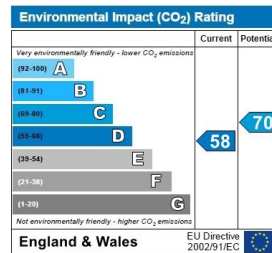
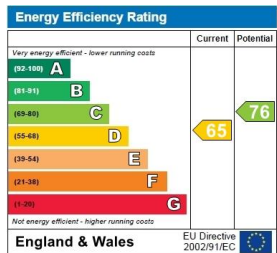
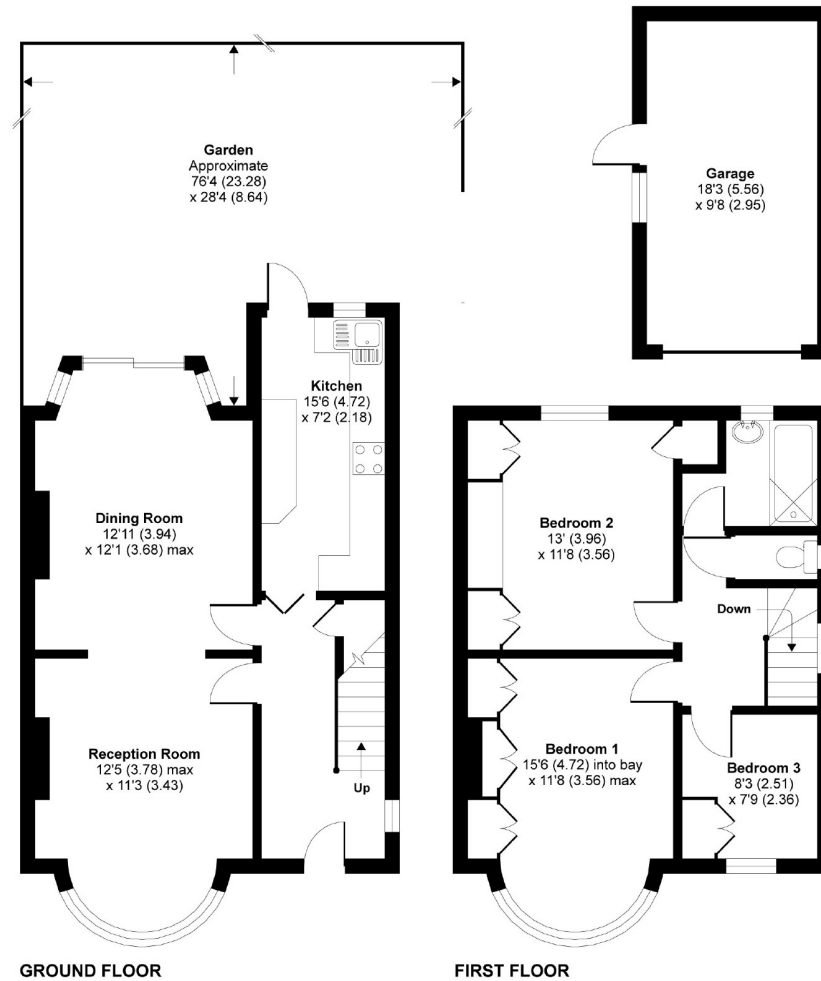
Real Estates are delighted to offer this 3 BEDROOM SEMI-DETACHED FAMILY HOME situated at the cul-de-sac end of Walmington Fold, within a short walk to Riverside Walk, local shops, cafes, bus services and West Finchley Northern Line tube station. Also located within school catchment area.

This property offers potential to extend to create spacious living and entertaining accommodation (subject to planning permission).

Walmington Fold, London, N12

Approximate Area = 1280 sq ft / 118.9 sq m (includes garage)

For identification only - Not to scale



Floor plan produced in accordance with RICS Property Measurement Standards incorporating International Property Measurement Standards (IPMS2 Residential). © ricschem 2020. Produced for Real Estates. REF: 595418

Woodside Park office: 14/14a Sussex Ring, Woodside Park, London N12 7HX

e : info@realestates-wsp.co.uk

t : 020 8445 6387

f : 020 8445 4492

w : www.realestates-wsp.co.uk



REAL ESTATES

Estate Agents - Residential Sales - Investments - Lettings