



Chiddingfold, Woodside Park, N12 7EX
Guide price £1,180,000



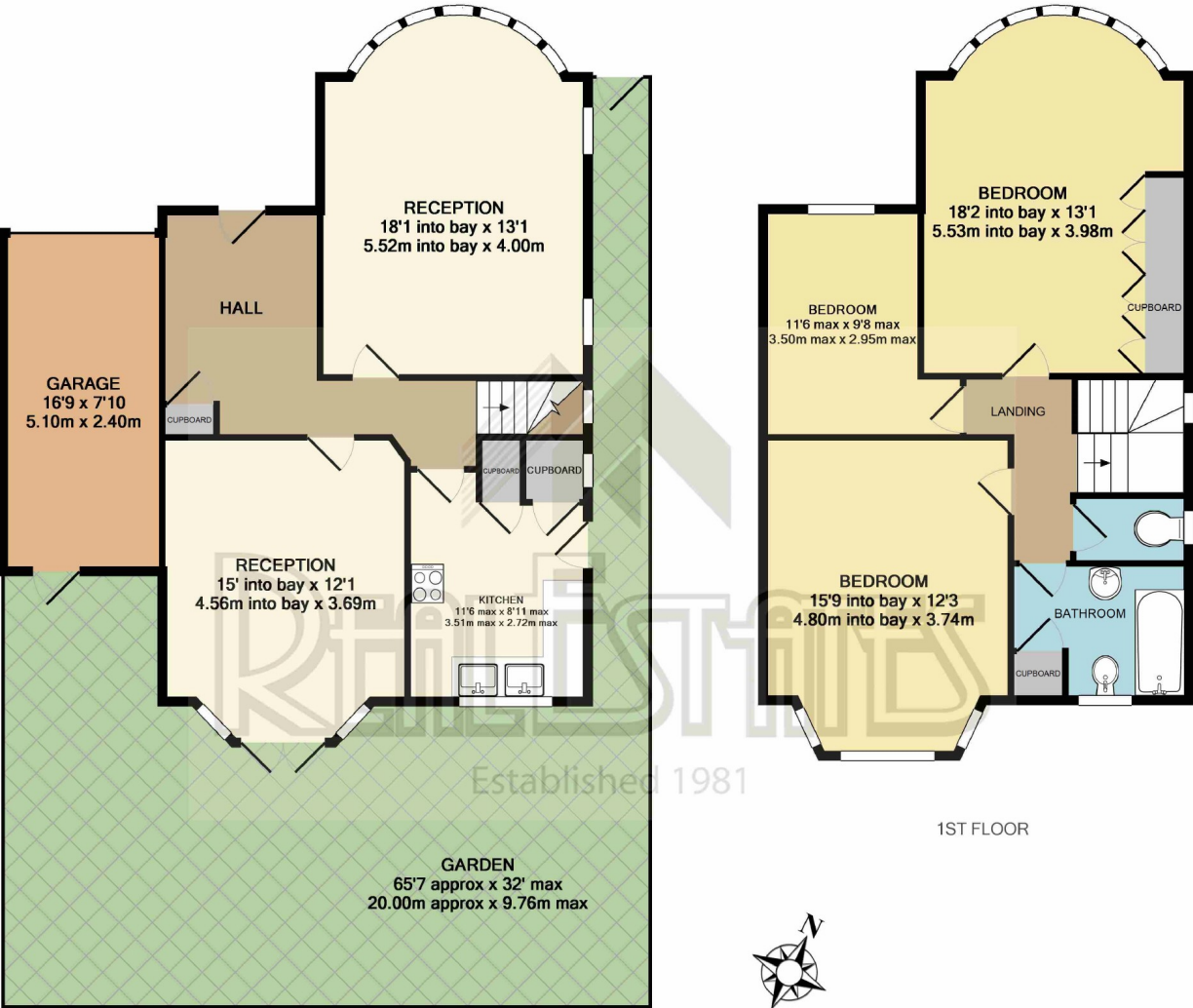
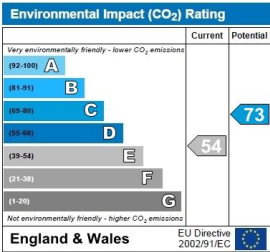
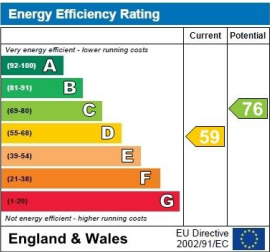
REAL ESTATES

Estate Agents - Residential Sales - Investments - Lettings

Real Estates are delighted to offer for sale this CHAIN FREE 3 BEDROOM LINK DETACHED Leyland built family home in CHIDDINGFOLD, a prime and sought after road in the heart of Woodside Park, facing a central green.

This property offers huge POTENTIAL TO EXTEND (stpp) and has the benefit of a SOUTH FACING rear garden, GARAGE and own driveway.

CHIDDINGFOLD is conveniently located close to Woodside Park Northern Line tube station, local shops, parkland and within the catchment area for Woodridge Primary School.



TOTAL APPROX. FLOOR AREA 1416 SQ.FT. (131.5 SQ.M.)
 GIA measurements are approximate. Not to scale. Illustrative purposes only. Not for valuation