



St Margaret's Avenue, Whetstone, N20 9LL
£899,950



REAL ESTATES

Estate Agents - Residential Sales - Investments - Lettings

Real Estates are delighted to offer for sale this well presented and carefully thought out, 4 BEDROOM SEMI-DETACHED home, situated within only a moments walk of Totteridge & Whetstone Northern Line tube station together with shops, restaurants and cafes at Whetstone High Road.

The property is offered in good condition and comprises a spacious entrance with built in storage units and guest cloakroom. Leaving the hall, you enter a large open space with a reception room to the front, breakfast area, separate utility room and then modern kitchen (fitted siemens appliances) with bi-folds leading into the garden. Upstairs there are 4 bedrooms with 2 bathrooms (1 en-suite)

Benefits also include under floor heating to the ground floor and bathrooms, off street parking and a beautiful terrace with matching flooring to the ground floor, which can be used as an extension to the living space in the summer months.

Viewing highly recommended via the sellers sole agent.

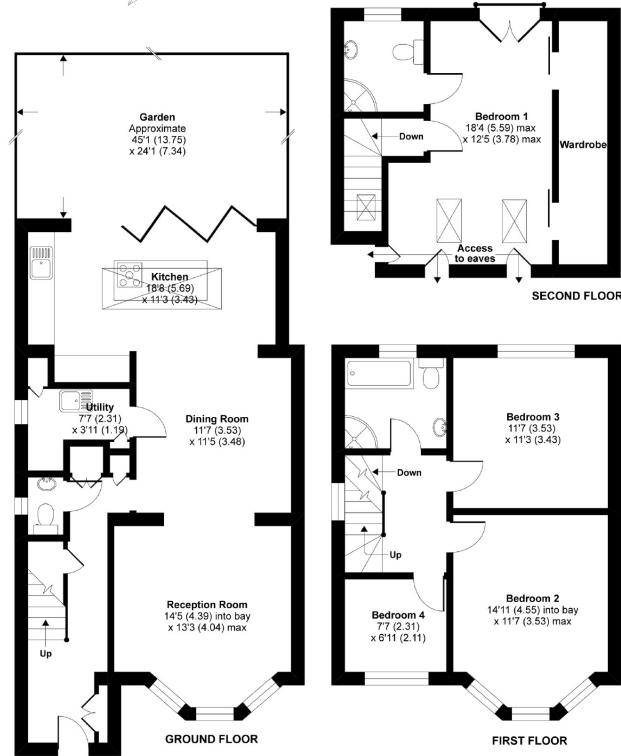




St. Margarets Avenue, London, N20

Approximate Area = 1538 sq ft / 143 sq m

For identification only - Not to scale



RICS Certified Property Measurer Floor plan produced in accordance with RICS Property Measurement Standards incorporating International Property Measurement Standards (IPMS2 Residential). ©richrecom 2020. Produced for Real Estates. RPR: 650463

Energy Efficiency Rating		Current	Potential
Very energy efficient - lower running costs			
105-109	A		82
91-101	B		
82-90	C		
69-81	D	67	
55-68	E		
41-54	F		
21-40	G		
Not energy efficient - higher running costs			
England & Wales			EU Directive 2002/91/EC



Totteridge office: 74 Totteridge Lane, Totteridge, London N20 8QG

e : totteridge@realestates-wsp.co.uk

t : 020 8445 3132

f : 020 8445 4492

w : www.realestates-wsp.co.uk



REAL ESTATES

Estate Agents - Residential Sales - Investments - Lettings