



Laurel Way, Totteridge, N20 8HR
£925,000



REAL ESTATES

Estate Agents - Residential Sales - Investments - Lettings

A well presented 4 bedroom 2 bathroom semi-detached family home in this sought after residential turning close to Woodside Park Northern Line tube station and Dollis Valley Green Walk.

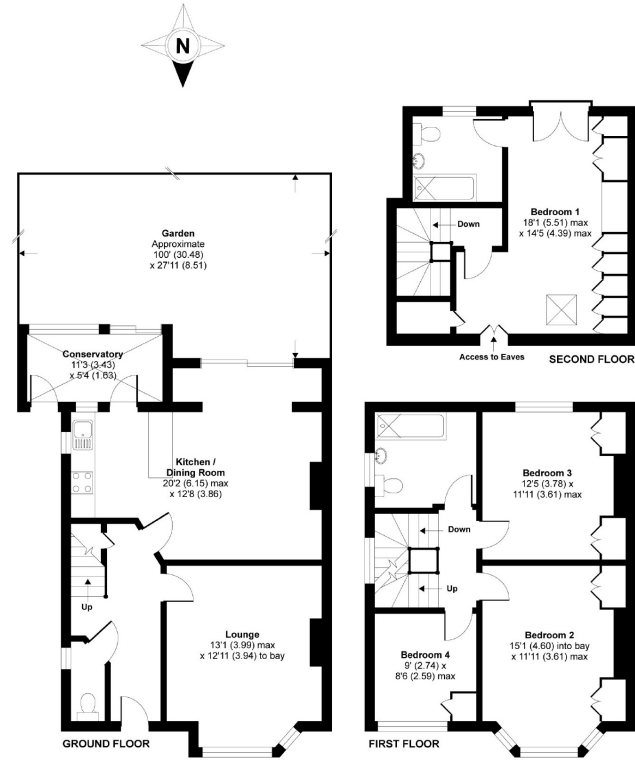
The property boasts a SOUTH FACING garden of approx 100 ft and offers potential to extend (STPP).






Laurel Way, London, N20

Approximate Area = 1575 sq ft / 146.3 sq m
For identification only - Not to scale



 Floor plan produced in accordance with RICS Property Measurement Standards incorporating International Property Measurement Standards (IPMS2 Residential). © richrecom 2020. Produced for Real Estates. REF: 646535



Woodside Park office: 14/14a Sussex Ring, Woodside Park, London N12 7HX

e : info@realestates-wsp.co.uk

t : 020 8445 6387

f : 020 8445 4492

w : www.realestates-wsp.co.uk



REAL ESTATES

Estate Agents - Residential Sales - Investments - Lettings