



Maison House, Whetstone, N20 9BE
£699,950



REAL ESTATES

Estate Agents - Residential Sales - Investments - Lettings

REAL ESTATES are delighted to offer for sale this well presented 3 BEDROOM, 2 BATHROOM (ON EN SUITE) APARTMENT in this modern block set behind Whetstone High Road, well served by local shops, restaurants and café bars as well as minutes' walk to the delightful Brook Farm Open Space for lovely country walks. There are bus stops just outside or a choice of Totteridge & Whetstone Northern Line Tube and Oakleigh Park Main Line Stations within only a short walk.

This 2ND FLOOR apartment is accessed by either stairs or lift and boasts a large PRIVATE TERRACE with views over Totteridge & Whetstone. The apartment comprises a spacious hallway with large built in storage and separate utility cupboard housing the washer/dryer, reception/dining area opening onto fitted kitchen with integrated appliances and 3 DOUBLE BEDROOMS all with fitted cupboards and floor to ceiling height windows. Further benefits include UNDER FLOOR HEATING THROUGHOUT and 2 UNDERGROUND PARKING SPACES.

Early viewing recommended via the sellers sole agent.

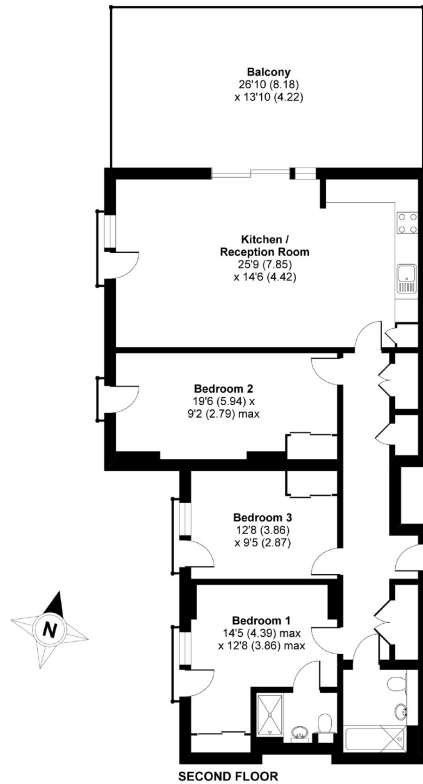




Acton Walk, London, N20

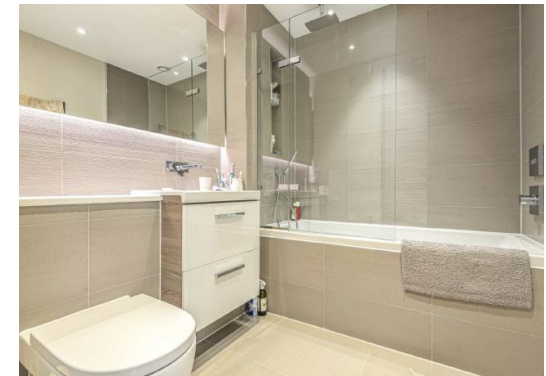
Approximate Area = 1106 sq ft / 102.7 sq m

For identification only - Not to scale



Floor plan produced in accordance with RICS Property Measurement Standards incorporating International Property Measurement Standards (IPMS2 Residential). ©richrecom 2020. Produced for Real Estates. REF: 650241

Energy Efficiency Rating		Environmental Impact (CO ₂) Rating	
Current	Potential	Current	Potential
Very energy efficient - lower rating costs		Very environmentally friendly - lower CO ₂ emissions	
86	86	92	92
England & Wales	EU Directive 2002/91/EC	England & Wales	EU Directive 2002/91/EC



Totteridge office: 74 Totteridge Lane, Totteridge, London N20 8QG

e : totteridge@realestates-wsp.co.uk

t : 020 8445 3132

f : 020 8445 4492

w : www.realestates-wsp.co.uk



REAL ESTATES

Estate Agents - Residential Sales - Investments - Lettings