



Baxendale, Whetstone, N20 0EG  
£925,000



REAL ESTATES

Estate Agents - Residential Sales - Investments - Lettings



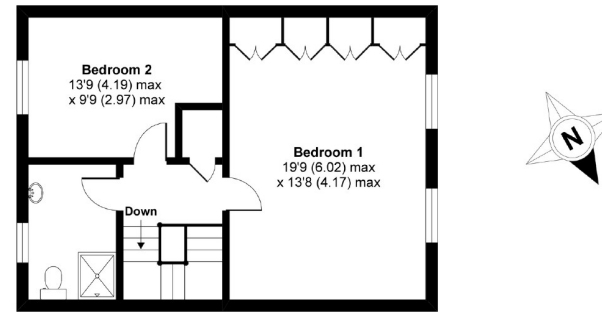
Real Estates are delighted to offer for sale this rarely available 3 BEDROOM, 2 BATHROOM TOWNHOUSE, set in large private grounds with lake, tennis and squash courts and a children's playground - all within a stone's throw of Totteridge & Whetstone Northern Line tube station and local amenities.

The property has been refurbished to a high standard by the current owners. On the ground floor there is a spacious kitchen-dining area, large utility room, walk-in larder and guest WC. On the first floor is a spacious reception room, with doors onto a balcony overlooking the garden and lake, plus a large double bedroom with en-suite bathroom. A very large master bedroom, third bedroom and a large shower-room are on the second floor.

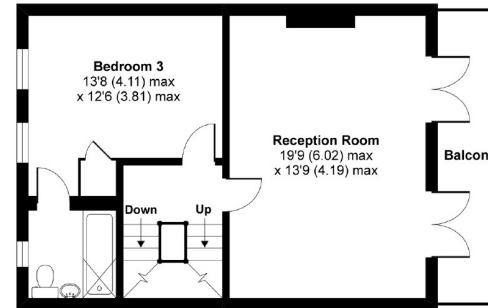
The property also benefits from off-street parking. Early viewing is highly recommended by the sellers' sole agent.

## Baxendale, Whetstone, London, N20

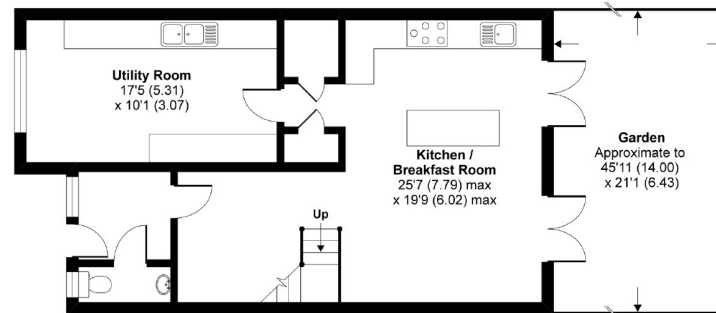
Approximate Area = 1794 sq ft / 166.6 sq m  
For identification only - Not to scale



SECOND FLOOR



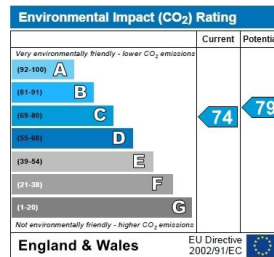
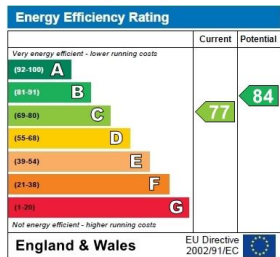
FIRST FLOOR



GROUND FLOOR



Floor plan produced in accordance with RICS Property Measurement Standards incorporating International Property Measurement Standards (IPMS2 Residential). © nichecom 2020. Produced for Real Estates. REF: 641224



Totteridge office: 74 Totteridge Lane, Totteridge, London N20 8QG

e : totteridge@realestates-wsp.co.uk

t : 020 8445 3132

f : 020 8445 4492

w : www.realestates-wsp.co.uk



REAL ESTATES

Estate Agents - Residential Sales - Investments - Lettings