



Nether Street, North Finchley, N12 7NN
£975,000



REAL ESTATES

Estate Agents - Residential Sales - Investments - Lettings

A charming and well presented 4 BEDROOM, 3 BATHROOM period property built circa 1885 retaining many character features including high ceilings and sash windows and boasting a SOUTH FACING REAR GARDEN.

Arranged over 3 floors, the spacious accommodation comprises guest cloakroom, bay fronted drawing room open to the dining room and modern fitted kitchen/breakfast room to the ground floor. The 1st floor provides 3 good size bedrooms (1 with en suite shower room and walk-in wardrobe), family bathroom and utility room. The master bedroom and large en suite bathroom (with under floor heating) occupies the 2nd floor. There is ample eaves storage space.

Externally, the SOUTH FACING rear garden extends to approx 60 ft and there is OFF STREET PARKING to the front.

The property is ideally situated just a few minutes walk to amenities at North Finchley High Road including Waitrose supermarket, transport facilities and the Arts Depot.

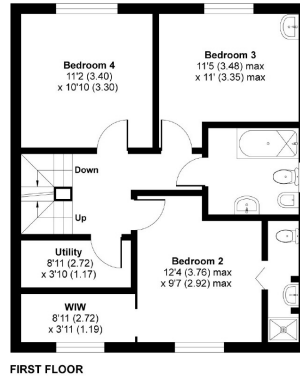
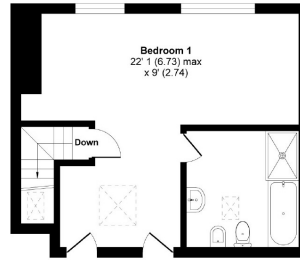
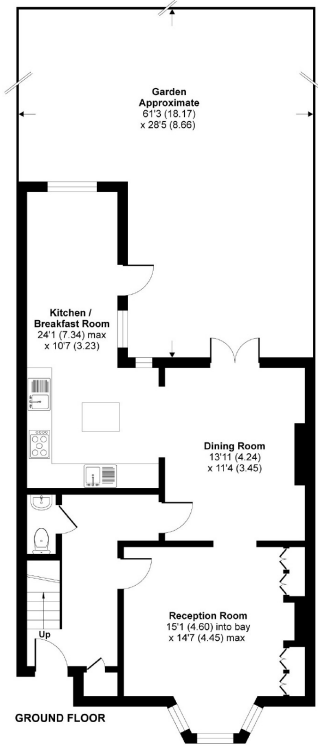
Viewing is highly recommended via Sole Agent REAL ESTATES on 020 8445 6387.





Nether Street, London, N12

Approximate Area = 1726 sq ft / 160 sq m
For identification only - Not to scale



Energy Efficiency Rating		
Very energy efficient - lower running costs	Current	Potential
92-100 A		
81-91 B		
69-80 C		79
55-68 D	60	
49-54 E		
35-48 F		
2-34 G		
Not energy efficient - higher running costs		
England & Wales		EU Directive 2002/91/EC



Certified Property Measurer Floor plan produced in accordance with RICS Property Measurement Standards incorporating International Property Measurement Standards (IPMS2 Residential). © richroom 2020. Produced for Real Estates. RFP: 699409



Woodside Park office: 14/14a Sussex Ring, Woodside Park, London N12 7HX

e : info@realestates-wsp.co.uk

t : 020 8445 6387

f : 020 8445 4492

w : www.realestates-wsp.co.uk



REAL ESTATES

Estate Agents - Residential Sales - Investments - Lettings