



Greenway, Totteridge, N20 8EJ
£3,100 Per Calendar Month

Council Tax Band G

REAL ESTATES
Est.1981

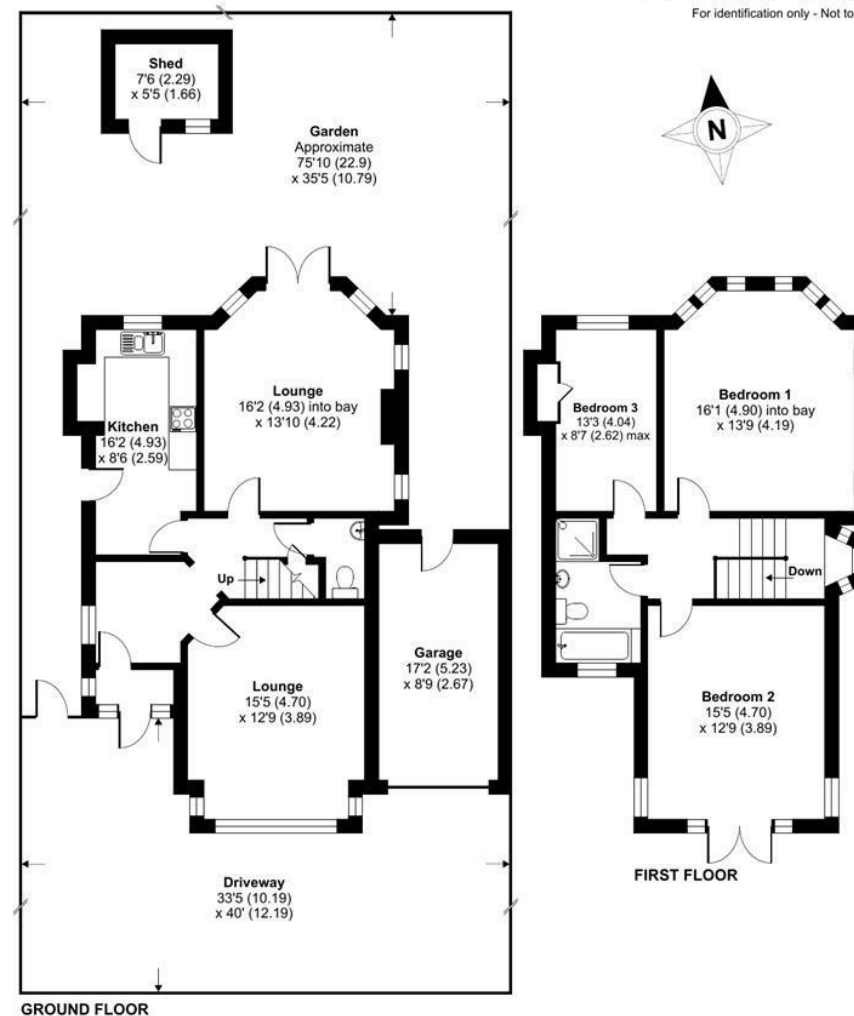
Estate Agents · Residential Sales · Investments · Lettings

*AVAILABLE END JULY *A 3 BEDROOM DETACHED house in this sought after turning in the heart of Totteridge, conveniently situated close to Whetstone High Road's multiple shops, restaurants and transport facilities including Totteridge & Whetstone Northern Line tube station.

* 2 RECEPTION ROOMS * FITTED KITCHEN * 3 BEDROOMS * MODERN BATHROOM/WC * FITTED CARPETS * GARAGE * OFF STREET PARKING * GARDEN * AVAILABLE END JULY * UNFURNISHED *

Greenway, London, N20

Approximate Area = 1370 sq ft / 127.3 sq m
 Garage = 148 sq ft / 13.7 sq m
 Shed = 41 sq ft / 3.8 sq m
 Total = 1559 sq ft / 144.8 sq m
 For identification only - Not to scale



Energy Efficiency Rating		Current	Potential
Very energy efficient - lower running costs			
102 (min)	A		
(81-101)	B		
(69-80)	C		
(55-68)	D		
(39-54)	E		
(21-38)	F		
(1-20)	G		
Not energy efficient - higher running costs			
		50	76

England & Wales EU Directive 2002/91/EC



Floor plan produced in accordance with RICS Property Measurement Standards incorporating International Property Measurement Standards (IPMS2 Residential). © nichecom 2023. Produced for Real Estates. REF: 1007966