



Ford House, New Barnet, EN5 5DY
Guide price £255,000



REAL ESTATES

Estate Agents - Residential Sales - Investments - Lettings

NEW TO THE MARKET- A bright and spacious 1 DOUBLE BEDROOM TOP FLOOR purpose built flat benefiting from double glazing, gas central heating, external storage shed, large communal garden and parking to rear.

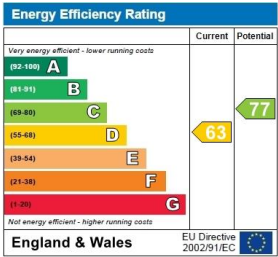
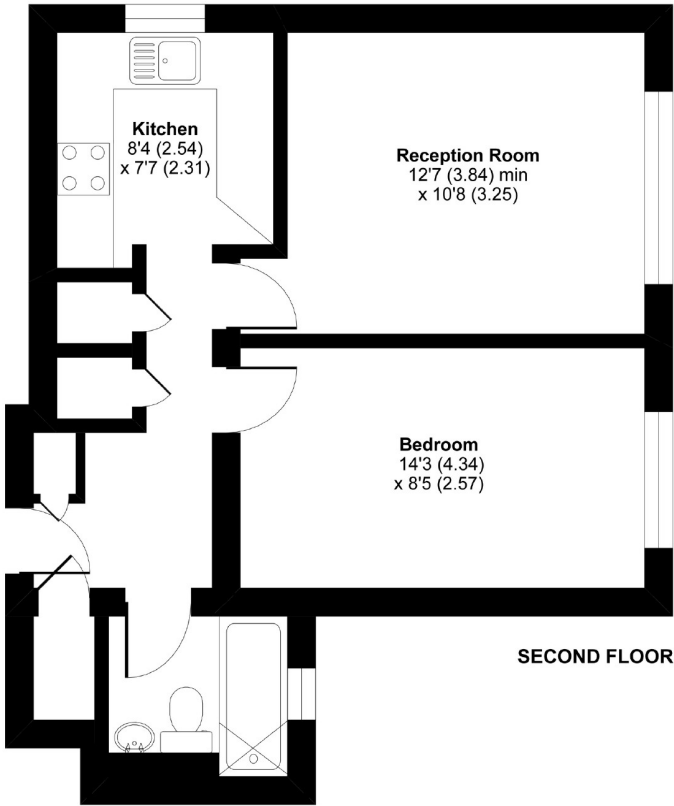
The block is ideally located for both New Barnet mainline station and High Barnet underground stations (Northern Line). The area is also served by numerous bus routes. The Everyman Cinema, LA Fitness gym and local shopping amenities are also within walking distance.

This property is offered CHAIN FREE. Sole Agent



Leicester Road, Barnet, EN5

Approximate Area = 469 sq ft / 43.6 sq m
For identification only - Not to scale



Floor plan produced in accordance with RICS Property Measurement Standards incorporating International Property Measurement Standards (IPMS2 Residential). © richcom 2021. Produced for Real Estates. REF: 685177

Totteridge office: 74 Totteridge Lane, Totteridge, London N20 8QG

e : totteridge@realestates-wsp.co.uk

t : 020 8445 3132

f : 020 8445 4492

w : www.realestates-wsp.co.uk



Estate Agents - Residential Sales - Investments - Lettings