



Greenway Close, Totteridge, N20 8ES
£1,095,000



REAL ESTATES

Estate Agents - Residential Sales - Investments - Lettings

Real Estates are delighted to offer for sale this 4 bedroom link-detached house in a sought after cul-de-sac, close to local schools, shops and transport facilities including Totteridge & Whetstone Northern Line tube station.

The generous accommodation measures approx 1890 sq ft and comprises 2 reception rooms, study, guest cloakroom and kitchen/breakfast/family room across the rear. 4 bedrooms and 3 bathrooms (2 en-suites) to the first floor.

Externally, there is a well maintained garden with patio area plus off street parking to the front.

The property is moments from beautiful open spaces with multiple footpaths to choose from to take you on countryside walks or through the woods if you prefer.

Early viewing highly recommended to avoid disappointment via the sellers Sole Agent on 020 8445 3132.

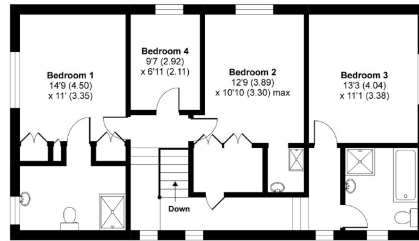




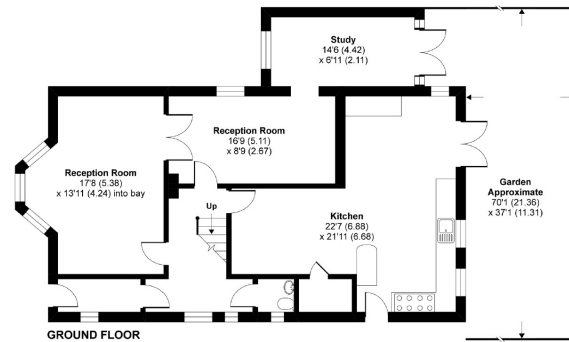
Greenway Close, London, N20

Approximate Area = 1890 sq ft / 175.6 sq m

For identification only - Not to scale



FIRST FLOOR



GROUND FLOOR



Floor plan produced in accordance with RICS Property Measurement Standards incorporating International Property Measurement Standards (IPMS2 Residential). ©richscom 2021. Produced for Real Estates. RGF: 092161

Energy Efficiency Rating		Current	Potential
Very energy efficient - lower running costs			
102-109	A		
91-101	B		
82-90	C		81
73-81	D	63	
64-72	E		
55-63	F		
46-54	G		
Below 45			
Not energy efficient - higher running costs			
England & Wales		EU Directive 2002/91/EC	



Totteridge office: 74 Totteridge Lane, Totteridge, London N20 8QG

e : totteridge@realestates-wsp.co.uk

t : 020 8445 3132

f : 020 8445 4492

w : www.realestates-wsp.co.uk



REAL ESTATES

Estate Agents - Residential Sales - Investments - Lettings