



Ventnor Drive, Totteridge, N20 8BU
£1,100,000



REAL ESTATES

Estate Agents - Residential Sales - Investments - Lettings

CHAIN FREE A 4 BEDROOM, 2 BATHROOM SEMI-DETACHED HOUSE offering spacious living and entertaining accommodation situated in a popular tree-lined residential turning in Totteridge, within the catchment area for primary schools and within walking distance of Totteridge & Whetstone Northern Line tube station.

This well maintained property comprises thru lounge/dining room, family room, fitted kitchen/breakfast room, guest cloakroom, utility room, 4 bedrooms, 2 bathroom, approx 80' rear garden and own driveway providing off street parking.

Potential to extend further if required (STPP).

Sole Agent Real Estates

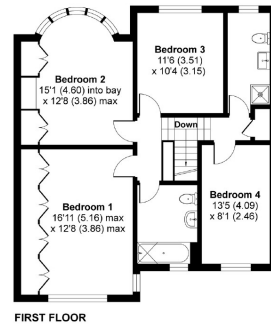




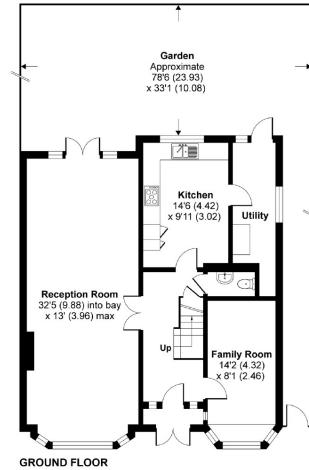
Ventnor Drive, London, N20

Approximate Area = 1820 sq ft / 169 sq m

For identification only - Not to scale



FIRST FLOOR



GROUND FLOOR



Floor plan produced in accordance with RICS Property Measurement Standards incorporating International Property Measurement Standards (IPMS2 Residential). ©ricecom 2021. Produced for Real Estates. REF: 707031

Energy Efficiency Rating		
	Current	Potential
Very energy efficient - lower running costs		
A		
B		
C		
D		
E		
F		
G		
Not energy efficient - higher running costs		
England & Wales		

76
53



Woodside Park office: 14/14a Sussex Ring, Woodside Park, London N12 7HX

e : info@realestates-wsp.co.uk

t : 020 8445 6387

f : 020 8445 4492

w : www.realestates-wsp.co.uk



REAL ESTATES

Estate Agents - Residential Sales - Investments - Lettings