



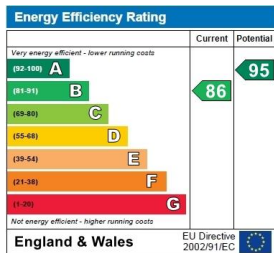
Wilkes Close, Mill Hill, NW7 1FP  
£725,000



Real Estates are delighted to offer for sale this three bedroom, two bathroom townhouse situated in the highly sought after Millbrook Park Development, within easy reach of Mill Hill East Northern Line tube station, local green spaces and park and play areas within the development.

The property comprises modern fitted kitchen, guest cloakroom and reception with doors leading onto the paved garden, The first floor provides 2 bedrooms and a bathroom, whilst the top floor comprises master bedroom with en suite shower room and walk-in wardrobe. Off street parking.

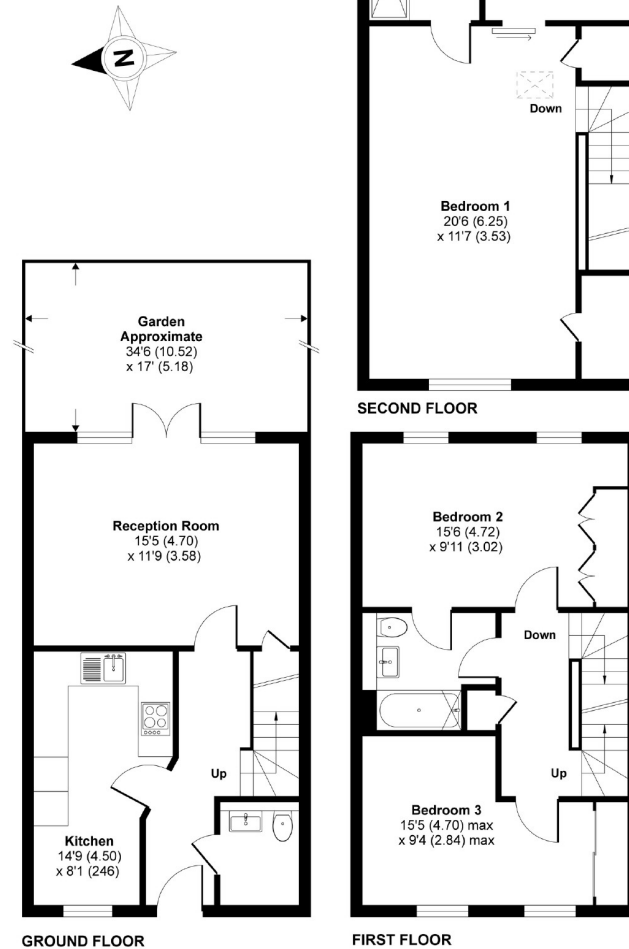
Viewing is highly recommended via the vendors' Sole Agent REAL ESTATES.



## Wilkes Close, London, NW7

Approximate Area = 1242 sq ft / 115 sq m

For identification only - Not to scale



Floor plan produced in accordance with RICS Property Measurement Standards incorporating International Property Measurement Standards (IPMS2 Residential). © nichcom 2021. Produced for Real Estates. REF: 721254

**Woodside Park office:** 14/14a Sussex Ring, Woodside Park, London N12 7HX

e : info@realestates-wsp.co.uk

t : 020 8445 6387

f : 020 8445 4492

w : www.realestates-wsp.co.uk



**REAL ESTATES**

Estate Agents - Residential Sales - Investments - Lettings