



David Wildman Lane, Mill Hill, NW7 1FH  
£725,000



REAL ESTATES

Estate Agents - Residential Sales - Investments - Lettings

Real Estates are delighted to offer for sale this three bedroom, two bathroom semi-detached house situated in the highly sought after Millbrook Park Development.

The property comprises of modern kitchen, WC, spacious reception room with doors leading onto a larger than average south facing garden, The first floor boasts 2 bedrooms and a family bathroom with master bedroom with en-suite to top floor with ample storage in the eaves and loft if required.

The property is set in a fantastic location within walking distance to amenities and Mill Hill East station with easy access into central London as well as local green spaces and park and play areas within the development. Further benefits include ample storage throughout and driveway with off street parking for one car.

Early viewing recommended via the sellers sole agent.





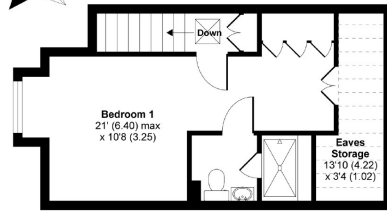
# David Wildman Lane, London, NW7

Approximate Area = 1091 sq ft / 101.3 sq m

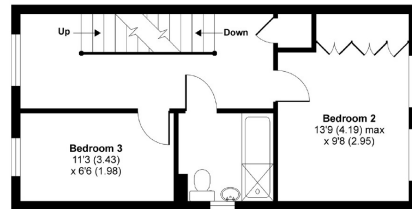
Limited Use Area(s) = 54 sq ft / 5 sq m

Total = 1145 sq ft / 106.3 sq m

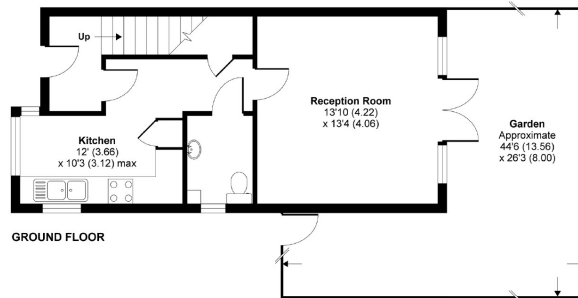
For identification only - Not to scale



SECOND FLOOR



FIRST FLOOR

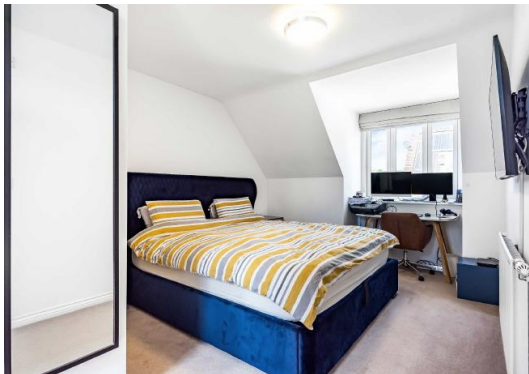


GROUND FLOOR

Denotes restricted head height



Floor plan produced in accordance with RICS Property Measurement Standards incorporating International Property Measurement Standards (IPMS2 Residential). ©richscom 2021. Produced for Real Estates. REF: 722327



Totteridge office: 74 Totteridge Lane, Totteridge, London N20 8QG

e : totteridge@realestates-wsp.co.uk

t : 020 8445 3132

f : 020 8445 4492

w : www.realestates-wsp.co.uk



REAL ESTATES

Estate Agents - Residential Sales - Investments - Lettings