



Courthouse Road, Woodside Park, N12 7PJ  
£850,000



REAL ESTATES

Estate Agents - Residential Sales - Investments - Lettings

Real Estates are delighted to offer this 4 BEDROOM HALLS ADJOINING family home, ideally situated for both West Finchley and Woodside Park's Northern Line tube stations, local amenities, parkland and local schools.

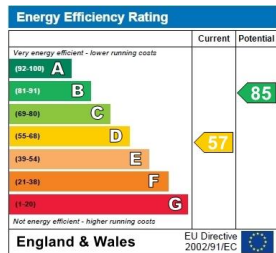
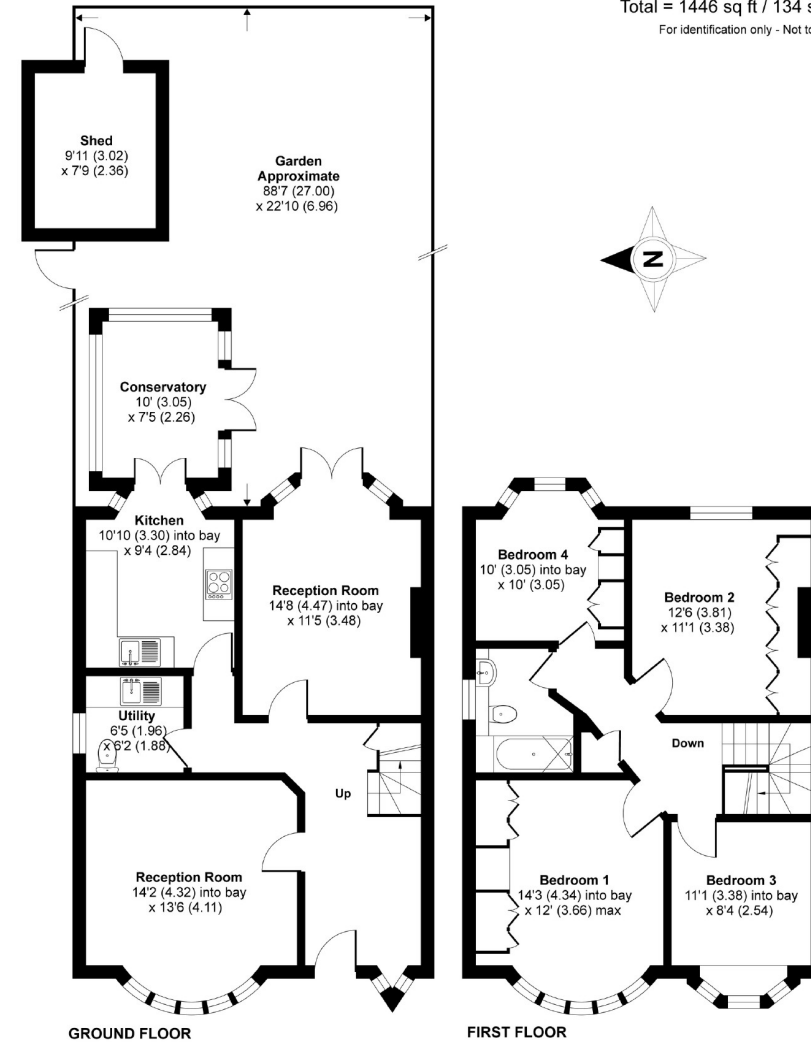
The spacious accommodation comprises 2 separate reception rooms, conservatory, fitted kitchen, guest cloakroom/utility room, 4 bedrooms and family bathroom/wc.

The rear garden which extends to approx 88 ft, is mainly laid to lawn with an abundance of trees and shrub borders. Off street parking to front.

Excellent potential for extension (STPP) and modernisation. Sole Agent Real Estates

## Courthouse Road, London, N12

Approximate Area = 1369 sq ft / 127 sq m  
 Outbuilding = 77 sq ft / 7 sq m  
 Total = 1446 sq ft / 134 sq m  
 For identification only - Not to scale



Floor plan produced in accordance with RICS Property Measurement Standards incorporating International Property Measurement Standards (IPMS2 Residential). © nichcom 2021. Produced for Real Estates. REF: 747154

Woodside Park office: 14/14a Sussex Ring, Woodside Park, London N12 7HX

e : info@realestates-wsp.co.uk

t : 020 8445 6387

f : 020 8445 4492

w : www.realestates-wsp.co.uk



REAL ESTATES

Estate Agents - Residential Sales - Investments - Lettings