



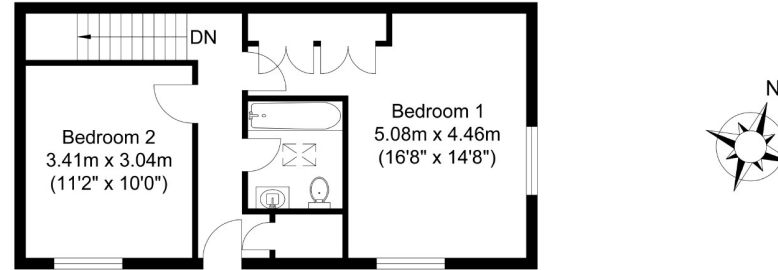
Totteridge Park, Totteridge, N20 8NH
£835,000

A charming 2 bedroom cottage arranged over 2 floors and comprising open plan reception/kitchen with access to a private terrace, 2 bedrooms, bathroom/wc and 2 allocated parking spaces.

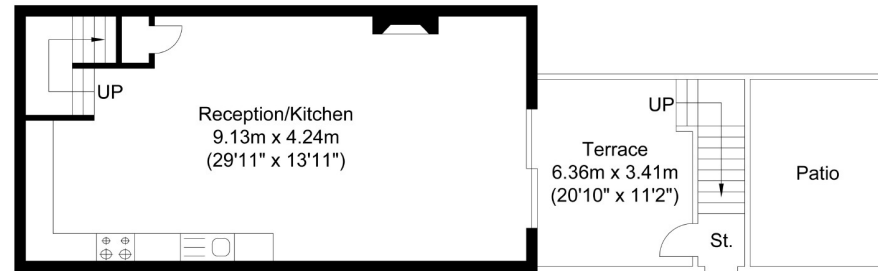
Set in landscaped grounds of 5 acres and protected by electric gated entrance.

For further information, please go to:

<http://www.totteridgepark.com>



Ground Floor
Approximate Floor Area
438.19 sq. ft.
(40.71 sq. m)



Lower Ground Floor
Approximate Floor Area
438.19 sq. ft.
(40.71 sq. m)

Cherry Tree Cottage

Total Floor Area
Approximate Floor Area
876.39 sq. ft.
(81.42 sq. m)

Totteridge office: 74 Totteridge Lane, Totteridge, London N20 8QG

e : totteridge@realestates-wsp.co.uk

t : 020 8445 3132

f : 020 8445 4492

w : www.realestates-wsp.co.uk



REAL ESTATES

Estate Agents - Residential Sales - Investments - Lettings