



Southover, Woodside Park, N12 7HG
Offers In Excess Of £1,500,000 Freehold Council Tax Band G

REAL ESTATES
Est.1981

Estate Agents · Residential Sales · Investments · Lettings

Real Estates are delighted to offer this substantial DOUBLE FRONTED DETACHED 5 BEDROOM family home with the benefit of a SOUTH WESTERLY REAR GARDEN and GARAGE via OWN DRIVEWAY.

Comprising approx 2816 sq ft of spacious living and entertaining accommodation including 5 reception rooms, 3 bathrooms, open plan fitted kitchen/breakfast room and guest cloakroom.

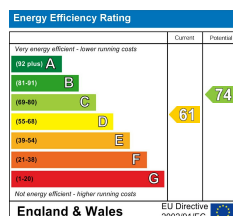
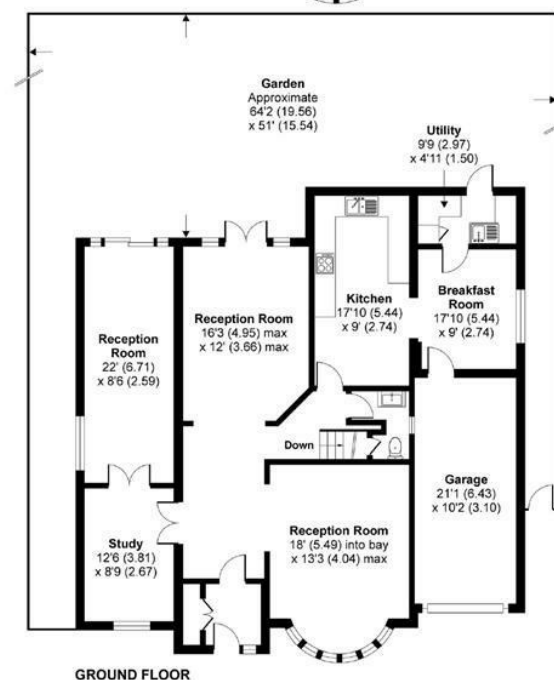
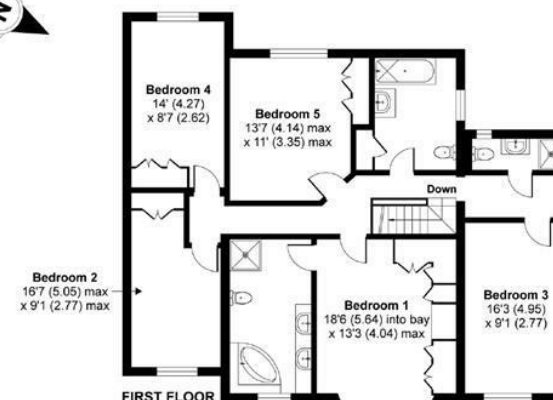
Ideally situated within the catchment area for Woodridge Primary school and within easy reach of local shops, bus services, parkland and Woodside Park Northern Line tube station.

Viewing is highly recommended via sole agent Real Estates.

Southover, London, N12

Approximate Area = 2816 sq ft / 261.6 sq m (includes garage)

For identification only - Not to scale



EU Directive 2002/91/EC



Floor plan produced in accordance with RICS Property Measurement Standards incorporating International Property Measurement Standards (IPMS2 Residential). © richcom 2021. Produced for Real Estates. REF: 799287