

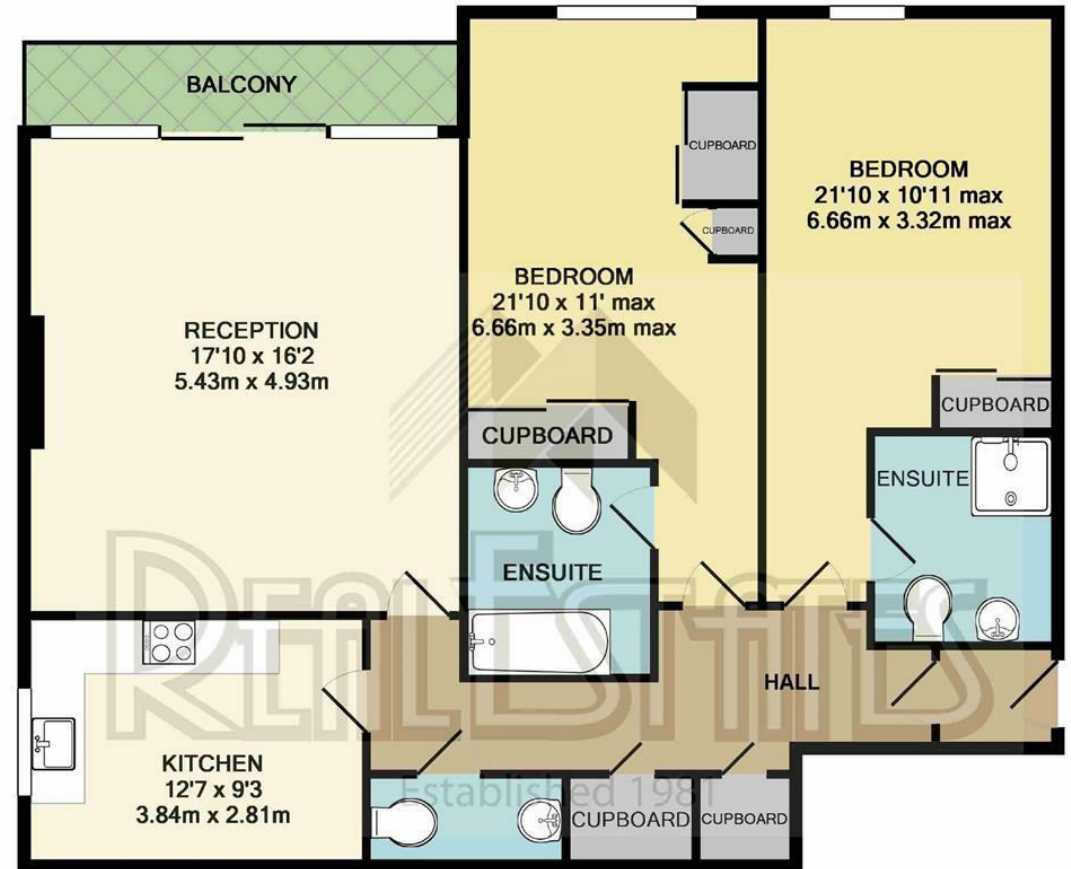


Willow Court, Woodside Park, N12 8TN  
Offers In Excess Of £650,000 Leasehold - Share of Freehold

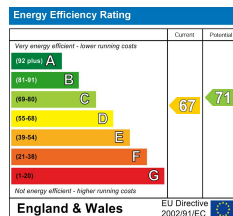


**\*CHAIN FREE\* IDEAL FOR INVESTMENT OPPORTUNITY OR OWNER OCCUPATION** - A well maintained 2 DOUBLE BEDROOM (BOTH EN SUITE) GROUND FLOOR FLAT conveniently situated in this popular residential road, ideally situated within a stone's throw of Woodside Park NORTHERN LINE tube station, local shops and parkland.

This property has the benefit of a 17 ft reception with access to balcony, guest cloakroom, fitted kitchen, communal garden and secure underground garage. Share of Freehold (91 yr lease remaining). Service charge £2,400 pa.



TOTAL APPROX. FLOOR AREA 1080 SQ.FT. (100.3 SQ.M.)  
GIA measurements are approximate. Not to scale. Illustrative purposes only



**Woodside Park office: 14/14a Sussex Ring, Woodside Park, London N12 7HX**

e : [info@realestates-wsp.co.uk](mailto:info@realestates-wsp.co.uk)

t : 020 8445 6387

f : 020 8445 4492

w : [www.realestates-wsp.co.uk](http://www.realestates-wsp.co.uk)