



Woodchester Court, Woodside Park, N12 7EZ
£2,100 Per Calendar Month Council Tax Band F

REAL ESTATES
Est. 1981

Estate Agents · Residential Sales · Investments · Lettings

LET AGREED - A 2 BEDROOM, 2 BATHROOM (1 EN SUITE) 2ND FLOOR APARTMENT in this purpose built block, just a stone's throw to Woodside Park Northern Line tube station.

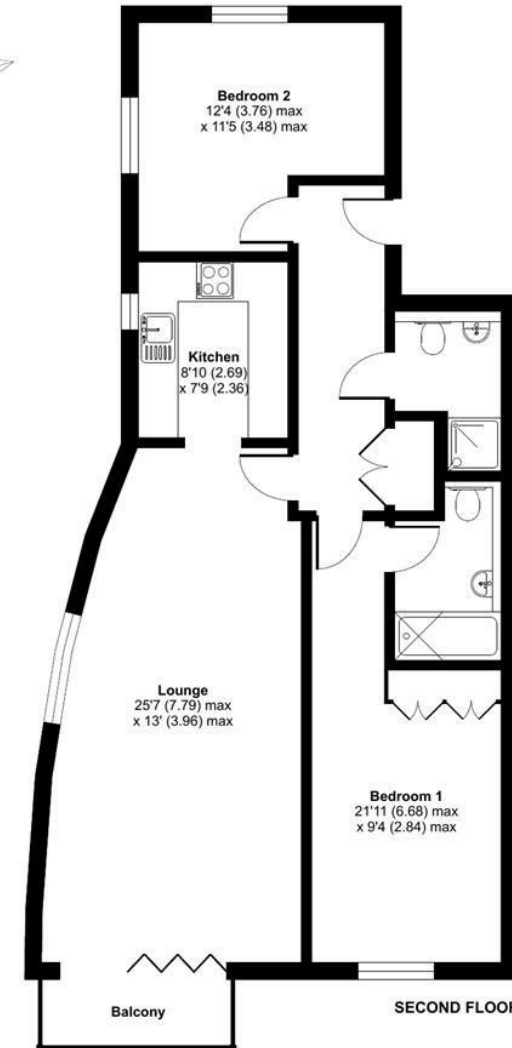
The property has the benefit of a lift in block, allocated parking space and communal gardens.

Woodchester Court, London, N12

Approximate Area = 858 sq ft / 79.7 sq m

For identification only - Not to scale

Energy Efficiency Rating		
	Current	Potential
Very energy efficient - lower running costs		
(92 plus) A		
(81-91) B	86	87
(69-80) C		
(55-68) D		
(39-54) E		
(21-38) F		
(1-20) G		
Not energy efficient - higher running costs		
England & Wales	EU Directive 2002/91/EC	



Floor plan produced in accordance with RICS Property Measurement Standards incorporating International Property Measurement Standards (IPMS2 Residential). © nichecom 2022. Produced for Real Estates. REF: 643232