

Chanctonbury Way, Woodside Park, N12 7JB  
£1,175,000 Freehold Council Tax Band F

**REAL ESTATES**  
Est.1981

Estate Agents · Residential Sales · Investments · Lettings



**\*CHAIN FREE\*** Real Estates are delighted to offer for sale this architecturally interior designed, 4 bedroom 2 bathroom (1 en suite) semi-detached family home offering spacious accommodation arranged over 3 floors, as well as a landscaped rear garden, garage and own driveway.

Chanctonbury Way is a popular residential location, ideally situated within the catchment area for various schools as well as being close to local amenities, transport facilities and parkland.

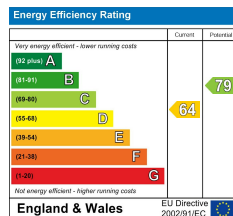
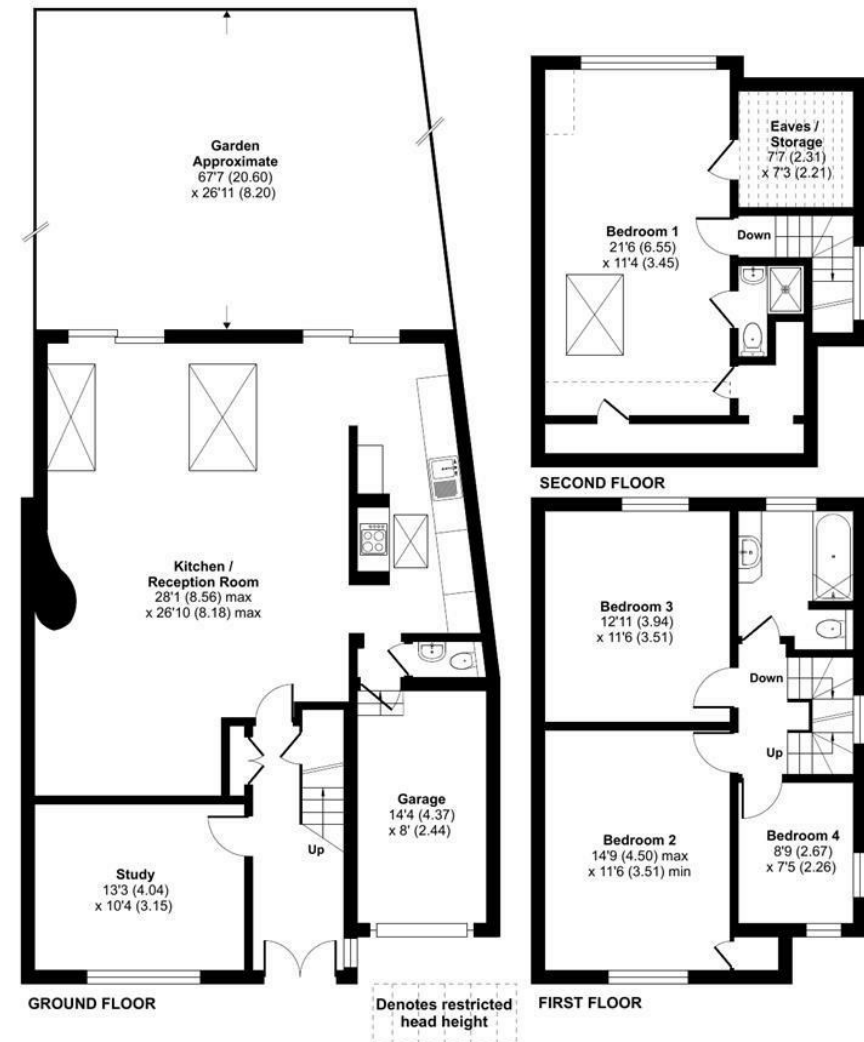
## Chanctonbury Way, London, N12

Approximate Area = 1819 sq ft / 168.9 sq m (includes garage)

Limited Use Area(s) = 147 sq ft / 13.6 sq m

Total = 1966 sq ft / 182.6 sq m

For identification only - Not to scale



Floor plan produced in accordance with RICS Property Measurement Standards incorporating International Property Measurement Standards (IPMS2 Residential). © nichecom 2022. Produced for Real Estates. REF: 655934