



Acton Walk, Whetstone, N20 9BL  
Asking Price £515,000 Leasehold Council Tax Band E

**REAL ESTATES**  
Est.1981

Estate Agents · Residential Sales · Investments · Lettings



Real Estates are delighted to offer for sale this 2 bedroom, 2 bathroom 2nd floor apartment in the heart of Whetstone, accessed via LIFT or stairs, with the added benefit of a SPACIOUS BALCONY benefiting from amazing sunset views.

The living/dining area is open plan to a modern fitted kitchen with stone worktop and fitted appliances. The hallway has a utility cupboard plus some made to measure units fantastic for storage fitted by the current owners. The master bedroom has an en-suite shower/wc and a luxury fitted bathroom, with bedroom 2 currently being used as another reception but with ample room for a double bed and fitted cupboard to the corner. This home also offers UNDERFLOOR HEATING throughout.

Externally there is a secure video door entry phone system and an electronic gated system to the RESIDENTS' PRIVATE CAR PARK. The ROOF GARDEN on this development has uninterrupted views across London and Herts and is truly breath-taking.

Northway House is a popular development in the heart of Whetstone with a variety of restaurants, M&S Food Hall, Waitrose and Boots all located on Whetstone High Road. Oakleigh Park Mainline (0.5 miles) & Totteridge & Whetstone tube (0.3 miles) stations.

Early viewing recommended. Sole Agent.

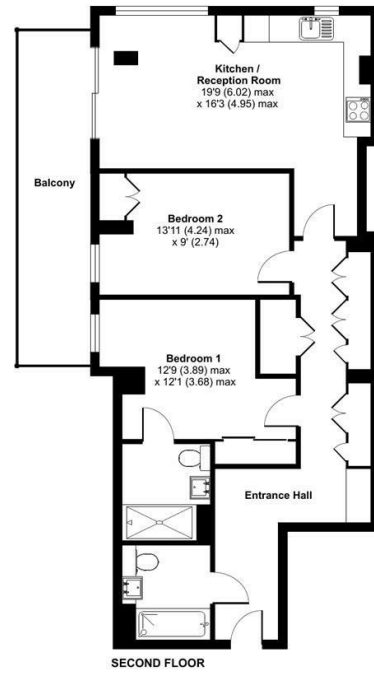






# Acton Walk, London, N20

Approximate Area = 823 sq ft / 76.4 sq m  
For identification only - Not to scale



Floor plan produced in accordance with RICS Property Measurement Standards incorporating International Property Measurement Standards (IPMS Residential). © rinchcom 2022. Produced for Real Estates - REF: 898933

Energy Efficiency Rating		Current	Potential
Very energy efficient - lower running costs			
92-100%	A	79	79
81-91%	B		
69-80%	C		
55-68%	D		
39-54%	E		
13-38%	F		
0-12%	G	Not energy efficient - higher running costs	
EU Directive			

