



Belmont Close, Totteridge, N20 8QT  
Asking Price £1,500,000 Freehold Council Tax Band G

**REAL ESTATES**  
Est.1981

Estate Agents · Residential Sales · Investments · Lettings

NEW TO THE MARKET - Real Estates are delighted to offer for sale this rarely available 4 BEDROOM, 2 BATHROOM SEMI-DETACHED house measuring in excess of 2500 sq ft and situated in one of Totteridge's most desirable roads.

Belmont Close is a quiet cul-de-sac in the heart of Totteridge, surrounded by open space and South Herts Golf Club.

The property is arranged over 4 floors including an impressive basement room (plus ample storage areas both internally underneath the kitchen and externally) which leads straight out onto secluded rear garden backing onto open space.

Further benefits include a garage via own driveway providing off street parking for 3 cars.

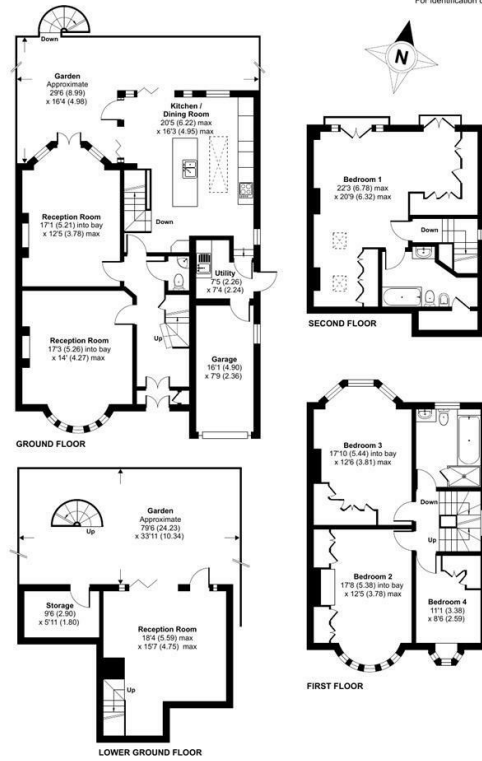
Viewing is highly recommended via joint sole agent Real Estates





# Belmont Close, London, N20

Approximate Area = 2530 sq ft / 235 sq m (includes garage)  
For identification only - Not to scale



Certified Property Measurer  
Floor plan produced in accordance with RICS Property Measurement Standards incorporating International Property Measurement Standards (IPMS Residential). © rinchcom 2022. Produced for Real Estates - REF: 906492.

Energy Efficiency Rating		Current	Potential
Very energy efficient - lower running costs	A		
Energy efficient - lower running costs	B		72
Decent energy efficiency - lower running costs	C		
Some energy efficiency - lower running costs	D	54	
Not very energy efficient - higher running costs	E		
Energy inefficient - higher running costs	F		
Very energy inefficient - higher running costs	G		

EU Directive



Real EstatesTotteridge Office:  
32 Totteridge Lane  
Totteridge N20 9QJ

ll : 0208 445 3132  
e : info@realestates-wsp.co.uk  
w : www.realestates-wsp.co.uk